



1162D Super Heavy Duty Casters Series (Double Wheel)

VQPU (brown flat) Wheel Diameter x Wheel Width 250 x 80mm

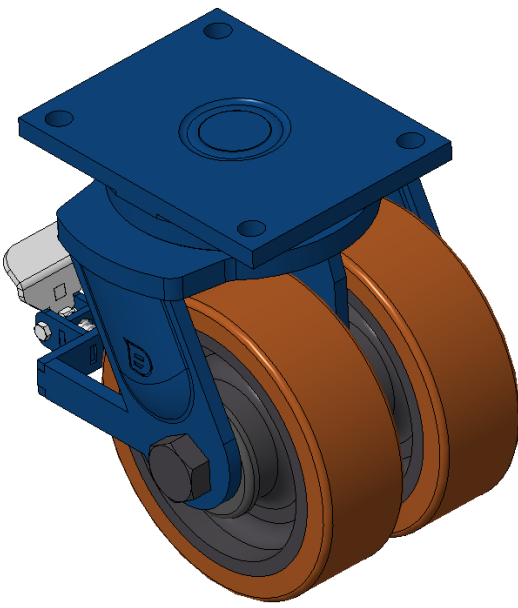
EAN

KS-11621000544321

Rear brake Caster, Welded Caster Fork Blue painted finish, Mounting Type - Top Plate, 140x105mm Bolt Hole Spacing Cast Iron Wheel Center, High Quality Polyurethane tread, Cast Iron brown Bearing—Ball Bearing

Wheel tread: Made of high-quality polyurethane
Wheel Center: iron core/cast iron core

Drawings are for reference only and may differ from the product



Picture may differ from original product

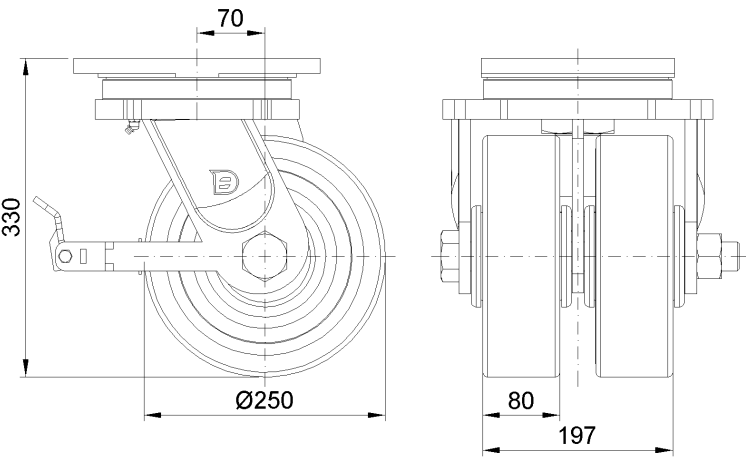
Technical Data

<input checked="" type="radio"/> Imperial <input type="radio"/> Metric	
Wheel Diameter	10 "
Wheel Width	3-1/8 "
Wheel Bearing	Wheels With Ball Bearings
Plate Size	10-1/16 " x 8 "
Bolt Hole Spacing	
Plate Hole	7/8 "
Offset	2-13/16 "
Swivel Interference	17-3/16 "
Overall Height	13 "
Swivel Radius	8-5/8 "
Hardness Of Tread	92±5° Shore A
Load Capacity (Dynamic)	3527lbs
Load Capacity (Static)	5291lbs
Temperature	-4°F to +158°F
Fork Type	Swivel Caster With Rear Brake
Stainless	N/A
Electrical Conductivity	N/A
Anti-Static	N/A
Weight	104.1lbs
Standard	ISO22883

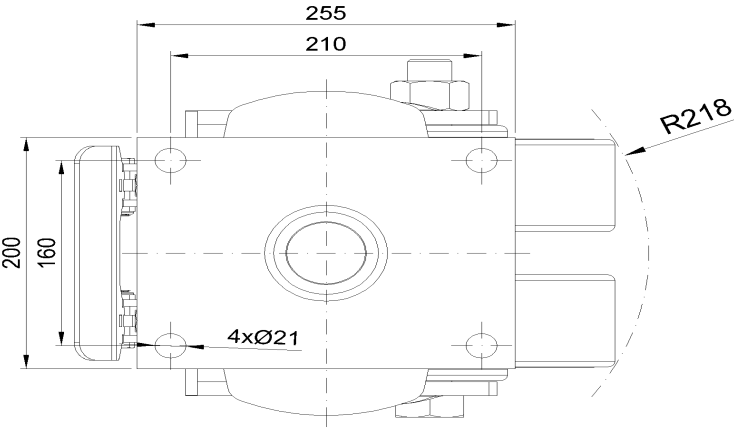
Advantages at a glance

Rolling Resistance	• • • • •
Operating Noise	• • • • •
Floor Surface Preservation	• • • • •

Dimensions



Mounting



* For any deviation between metric and imperial spec, please refer to the metric spec.