

1162 Super Heavy Duty Casters Series (Single Wheel)

VXPU (burgundy round) Wheel Diameter x Wheel Width 250 x 62mm

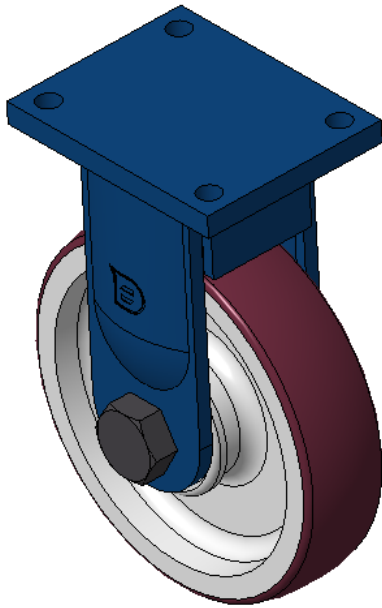
EAN

KS-11621000691011

Rigid Caster with Welded Caster Fork, blue painted finish Mounting Type - Top Plate, 140x105mm Bolt Hole Spacing Cast Iron Wheel Center with High Quality Polyurethane tread, Cast Iron burgundy Bearing - Taper Roller Bearing

Wheel tread: Made of high-quality polyurethane  
Wheel Center: iron core/cast iron core

Drawings are for reference only and may differ from the product



Picture may differ from original product

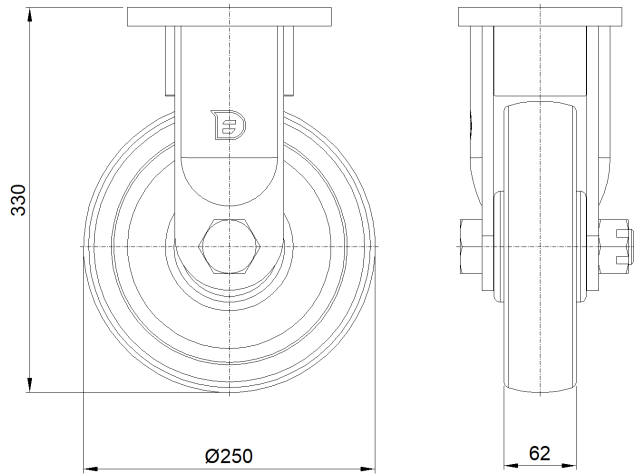
Technical Data

<input checked="" type="radio"/> Metric <input type="radio"/> Imperial	
Wheel Diameter	250mm
Wheel Width	62mm
Wheel Bearing	Wheels With Ball Bearings
Plate Size	175 x 140mm
Bolt Hole Spacing	140x105mm
Plate Hole	17mm
Overall Height	330mm
Hardness Of Tread	93±5° Shore A
Load Capacity (Dynamic)	1600kgs
Load Capacity (Static)	2400kgs
Temperature	-20°C to +70°C
Fork Type	Rigid Caster
Stainless	N/A
Electrical Conductivity	N/A
Anti-Static	N/A
Weight	20.66kgs
Standard	ISO22883

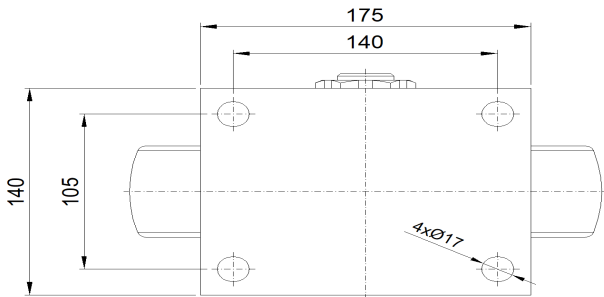
Advantages at a glance

Rolling Resistance	● ● ● ○ ○
Operating Noise	● ● ● ● ○
Floor Surface Preservation	● ● ● ● ● ○

Dimensions



Mounting



\* For any deviation between metric and imperial spec, please refer to the metric spec.