

1162 Super Heavy Duty Casters Series (Single Wheel)



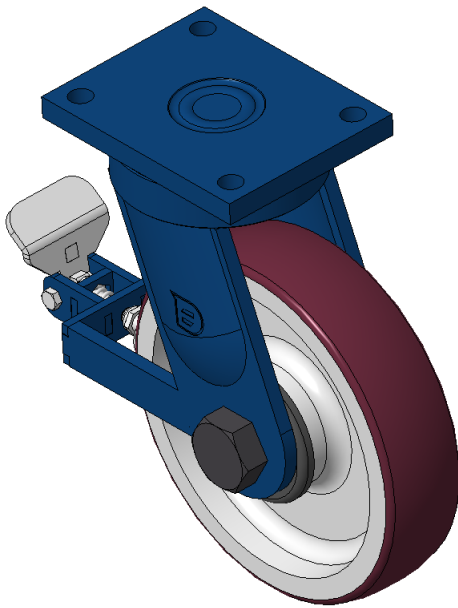
VXPU (burgundy round) Wheel Diameter x Wheel Width 250 x 62mm

KS-11621000694011

Rear brake Caster, Welded Caster Fork Blue painted finish, Mounting Type - Top Plate, 140x105mm Bolt Hole Spacing Cast Iron Wheel Center, High Quality Polyurethane tread, burgundy finish Bearing—Ball Bearing

Wheel tread: Made of high-quality polyurethane
Wheel Center: iron core/cast iron core

Drawings are for reference only and may differ from the product



Picture may differ from original product

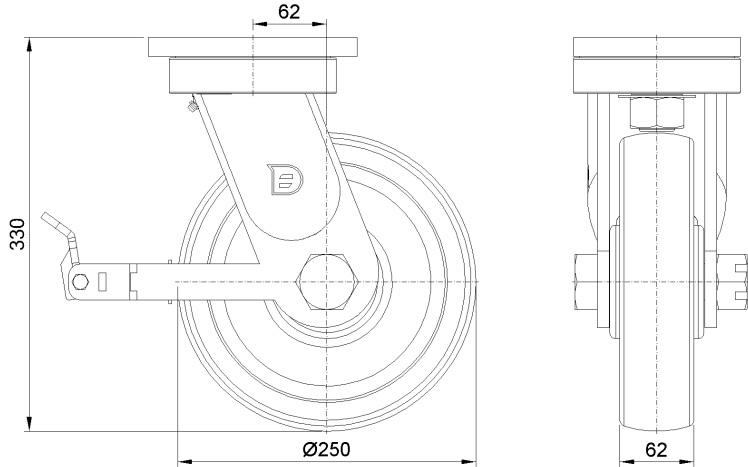
Technical Data

<input checked="" type="radio"/> Metric <input type="radio"/> Imperial	
Wheel Diameter	250mm
Wheel Width	62mm
Wheel Bearing	Wheels With Ball Bearings
Plate Size	175 x 140mm
Bolt Hole Spacing	140x105mm
Plate Hole	17mm
Offset	62mm
Swivel Interference	378mm
Overall Height	330mm
Swivel Radius	189mm
Hardness Of Tread	93±5° Shore A
Load Capacity (Dynamic)	1600kgs
Load Capacity (Static)	2400kgs
Temperature	-20°C to +70°C
Fork Type	Swivel Caster With Rear Brake
Stainless	N/A
Electrical Conductivity	N/A
Anti-Static	N/A
Weight	23.72kgs
Standard	ISO22883

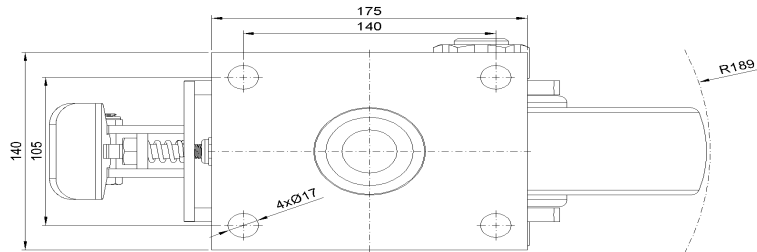
Advantages at a glance

Rolling Resistance	● ● ● ○ ○
Operating Noise	● ● ● ● ○
Floor Surface Preservation	● ● ● ● ○

Dimensions



Mounting



* For any deviation between metric and imperial spec, please refer to the metric spec.