

1162D Super Heavy Duty Casters Series (Double Wheel)



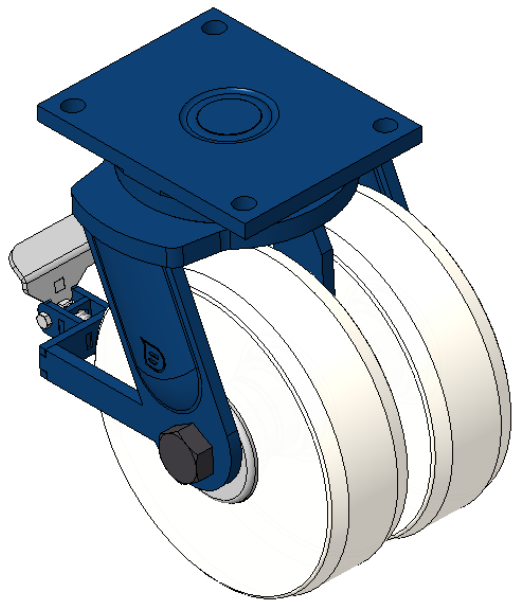
MC Nylon Wheel (Off-White) Wheel Diameter×Wheel Width 300×90mm

EAN  
KS-11621200074311

Rear brake Caster, Welded Caster Fork, blue paint finish  
Base plate Mounting Type device, 210x160mm Bolt Hole Spacing  
Reinforced Polypropylene Wheel Center and Wheel Tread, off-white  
Bearing—slanted ball bearing

Wheel surface: thermoplastic  
Wheel Center: thermoplastic

Drawings are for reference only and may differ from the product



Picture may differ from original product

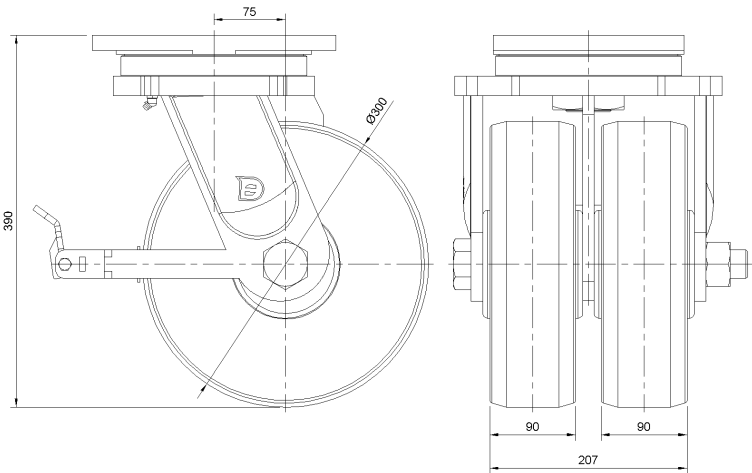
Technical Data

<input checked="" type="radio"/> Metric <input type="radio"/> Imperial	
Wheel Diameter	300mm
Wheel Width	207mm
Wheel Bearing	Wheels With Ball Bearings
Plate Size	255 x 200mm
Bolt Hole Spacing	210 x 160mm
Plate Hole	21mm
Offset	75mm
Swivel Interference	496mm
Overall Height	390mm
Swivel Radius	248mm
Hardness Of Tread	82±5° Shore D
Load Capacity (Dynamic)	10000kgs
Load Capacity (Static)	15000kgs
Temperature	-25°C to +80°C
Fork Type	Swivel Caster With Rear Brake
Stainless	N/A
Electrical Conductivity	N/A
Anti-Static	N/A
Weight	51.59kgs
Standard	ISO22883

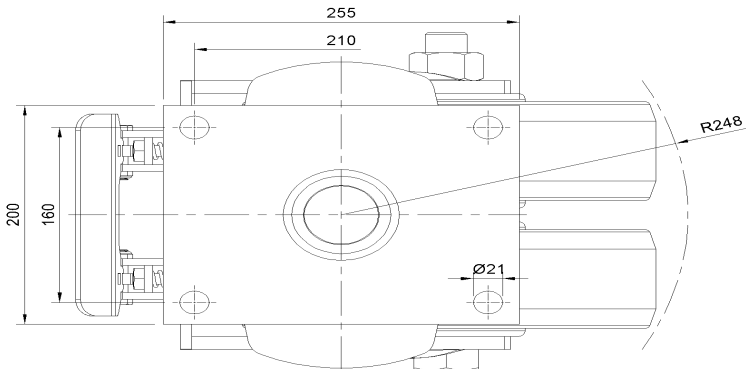
Advantages at a glance

Rolling Resistance	● ● ● ● ●
Operating Noise	● ● ○ ○ ○
Floor Surface Preservation	● ● ○ ○ ○

Dimensions



Mounting



\* For any deviation between metric and imperial spec, please refer to the metric spec.