

1162 Super Heavy Duty Casters Series (Single Wheel)



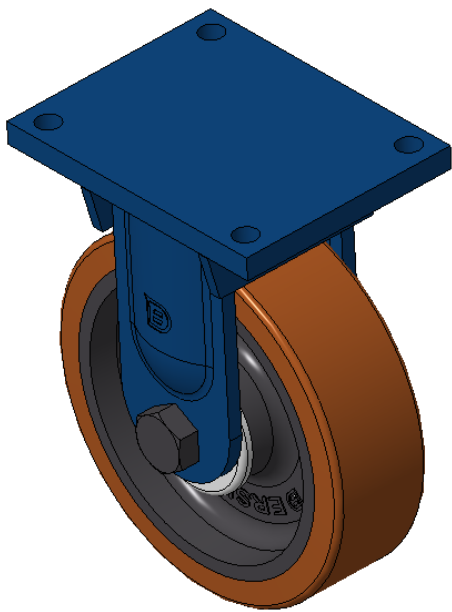
VQPU (brown round) Wheel Diameter x Wheel Width 300 x 90mm

EAN  
KS-11621200541111

Rigid Casters, Welded Caster Fork, blue paint finish.  
Base plate Mounting Type device, 210x160mm Bolt Hole Spacing.  
Cast Iron Wheel Center, High Quality Polyurethane Wheel Tread, Cast Iron brown.  
Bearing—skew ball bearing.

Wheel Tread: Hhigh-Quality Polyurethane  
Wheel Center: Iron core/Cast iron core

Drawings are for reference only and may differ from the product



Picture may differ from original product

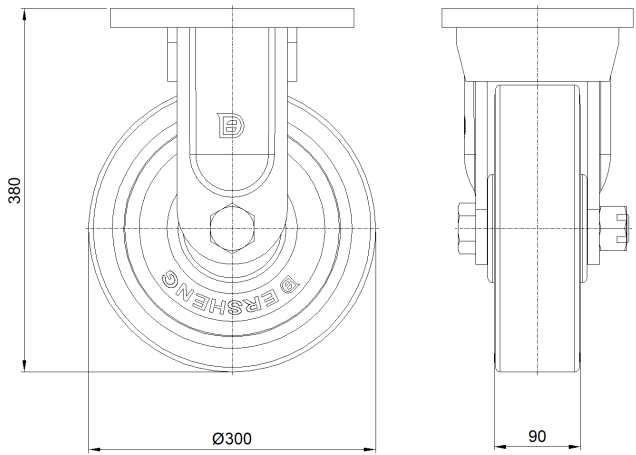
Technical Data

<input checked="" type="radio"/> Metric <input type="radio"/> Imperial	
Wheel Diameter	300mm
Wheel Width	90mm
Wheel Bearing	Wheel With Taper Roller Bearings
Plate Size	255 x 200mm
Bolt Hole Spacing	210 x 160mm
Plate Hole	21mm
Overall Height	380mm
Hardness Of Tread	92±5° Shore A
Load Capacity (Dynamic)	2700kgs
Load Capacity (Static)	4050kgs
Temperature	-20°C to +70°C
Fork Type	Rigid Caster
Stainless	N/A
Electrical Conductivity	N/A
Anti-Static	N/A
Weight	32.86kgs
Standard	ISO22883

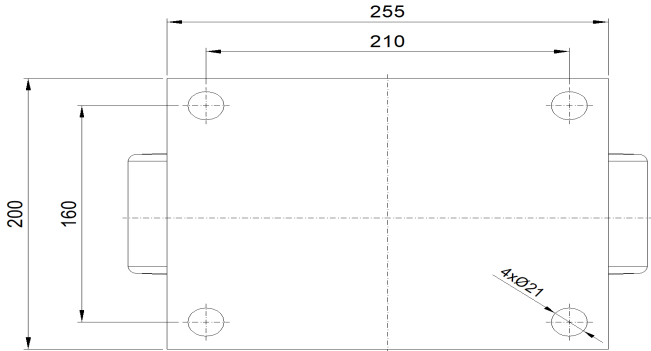
Advantages at a glance

Rolling Resistance	● ● ● ● ●
Operating Noise	● ● ● ● ●
Floor Surface Preservation	● ● ● ● ●

Dimensions



Mounting



\* For any deviation between metric and imperial spec, please refer to the metric spec.