

1162D Super Heavy Duty Casters Series (Double Wheel)



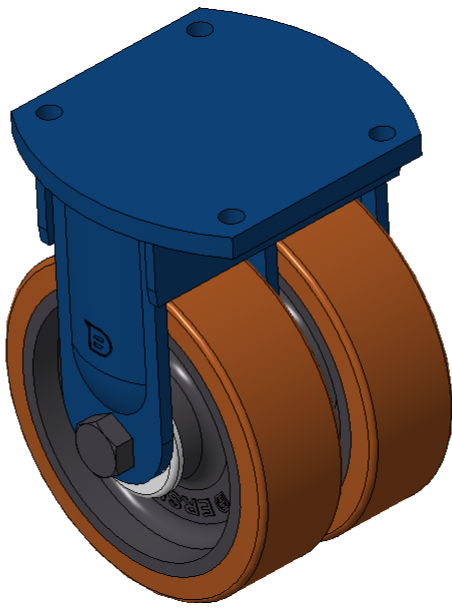
VQPU (brown round) Wheel Diameter x Wheel Width 300 x 90mm

EAN
KS-11621200541321

Rigid Casters, Welded Caster Fork, blue paint finish.
Base plate Mounting Type device, 210x160mm Bolt Hole Spacing.
Cast Iron Wheel Center, High Quality Polyurethane Wheel Tread, Cast Iron brown.
Bearing—skew ball bearing.

Wheel Tread: Hhigh-Quality Polyurethane
Wheel Center: Iron core/Cast iron core

Drawings are for reference only and may differ from the product



Picture may differ from original product

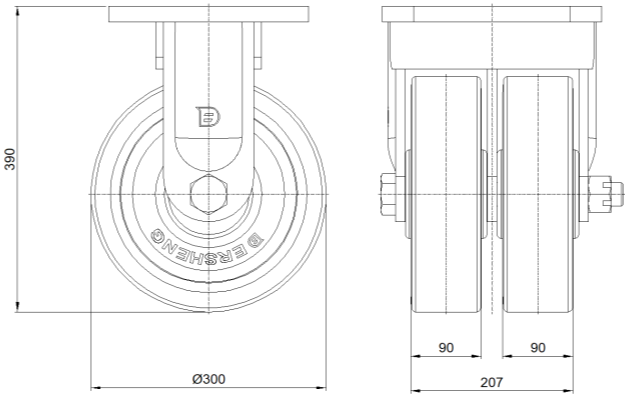
Technical Data

<input checked="" type="radio"/> Imperial <input type="radio"/> Metric	
Wheel Diameter	11-13/16 "
Wheel Width	8-1/8 "
Wheel Bearing	Wheel With Taper Roller Bearings
Plate Size	10-1/16 " x 8 "
Bolt Hole Spacing	8-17/64 " x 6-19/64 "
Plate Hole	7/8 "
Overall Height	15-23/64 "
Hardness Of Tread	92±5° Shore A
Load Capacity (Dynamic)	10803lbs
Load Capacity (Static)	16204lbs
Temperature	-4°F to +158°F
Fork Type	Rigid Caster
Stainless	N/A
Electrical Conductivity	N/A
Anti-Static	N/A
Weight	124.8lbs
Standard	ISO22883

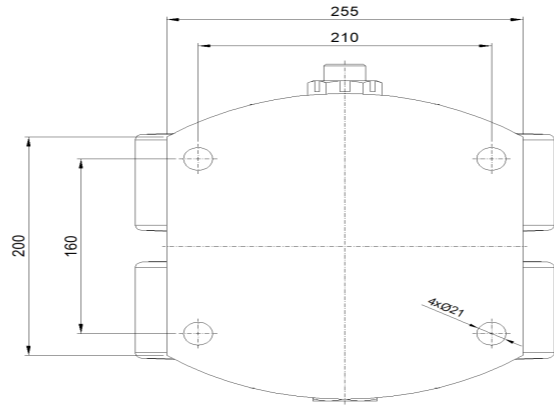
Advantages at a glance

Rolling Resistance	● ● ● ● ●
Operating Noise	● ● ● ● ●
Floor Surface Preservation	● ● ● ● ●

Dimensions



Mounting



* For any deviation between metric and imperial spec, please refer to the metric spec.