

1162D Super Heavy Duty Casters Series  
(Double Wheel)



VXPU (burgundy flat) Wheel Diameter x Wheel Width 300 x 90mm

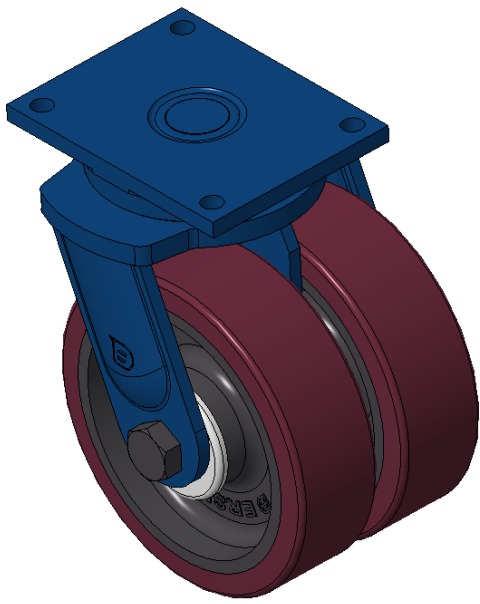
EAN

KS-11621200692321

Swivel Caster with Welded Caster Fork, blue paint finish Mounting Type - Top Plate, 210x160 Bolt Hole Spacing Cast Iron Wheel Center, High Quality Polyurethane tread, Cast Iron burgundy Bearing: Taper Roller Bearing

Wheel tread: Made of high-quality polyurethane  
Wheel Center: iron core/cast iron core

Drawings are for reference only and may differ from the product



Picture may differ from original product

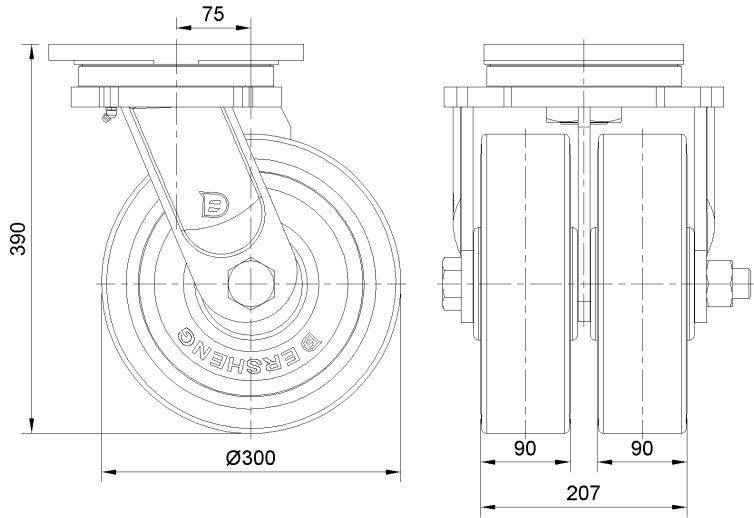
Technical Data

<input checked="" type="radio"/> Metric <input type="radio"/> Imperial	
Wheel Diameter	300mm
Wheel Width	207mm
Wheel Bearing	Wheels With Ball Bearings
Plate Size	255 x 200mm
Bolt Hole Spacing	210 x 160mm
Plate Hole	21mm
Offset	75mm
Swivel Interference	496mm
Overall Height	390mm
Swivel Radius	248mm
Hardness Of Tread	93±5° Shore A
Load Capacity (Dynamic)	4900kgs
Load Capacity (Static)	7350kgs
Temperature	-20°C to +70°C
Fork Type	Swivel Caster
Stainless	N/A
Electrical Conductivity	N/A
Anti-Static	N/A
Weight	61.03kgs
Standard	ISO22883

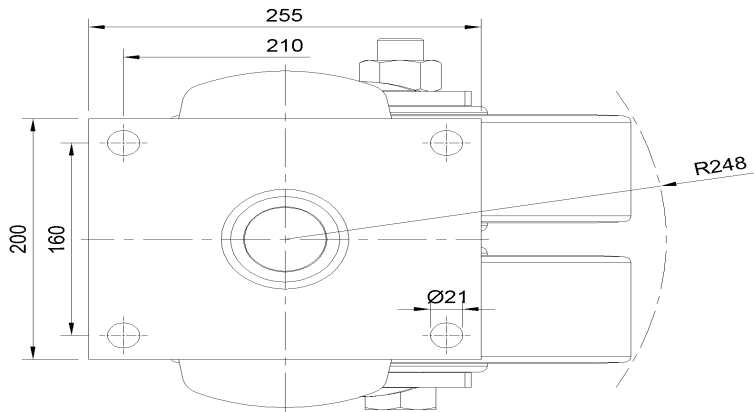
Advantages at a glance

Rolling Resistance	● ● ● ○ ○
Operating Noise	● ● ● ● ○
Floor Surface Preservation	● ● ● ● ○

Dimensions



Mounting



\* For any deviation between metric and imperial spec, please refer to the metric spec.