



1162D Super Heavy Duty Casters Series (Double Wheel)

VXPU (burgundy flat) Wheel Diameter x Wheel Width 300 x 90mm

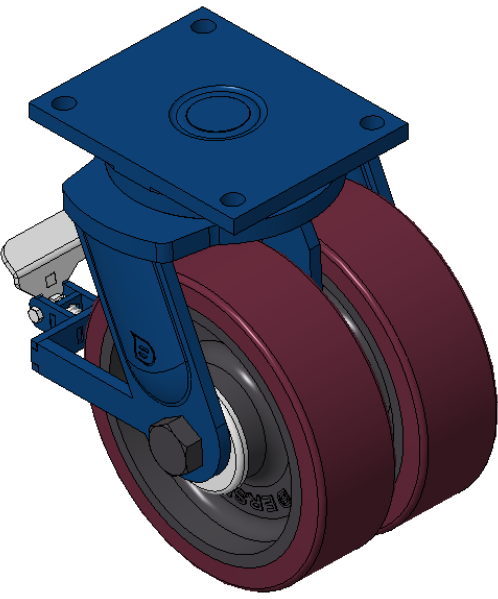
EAN

KS-11621200694321

Rear brake Caster, Welded Caster Fork, blue painted finish Mounting Type - Top Plate, 210x160 Bolt Hole Spacing Cast Iron Wheel Center, High Quality Polyurethane tread, Cast Iron burgundy Bearing - Taper Roller Bearing

Wheel tread: Made of high-quality polyurethane
Wheel Center: iron core/cast iron core

Drawings are for reference only and may differ from the product



Picture may differ from original product

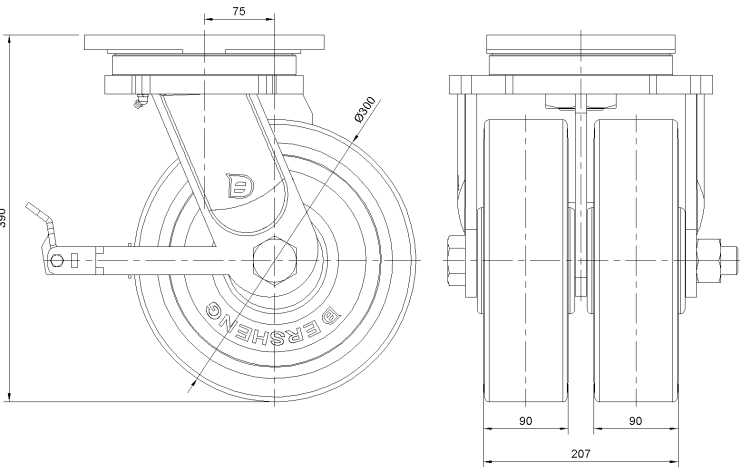
Technical Data

<input checked="" type="radio"/> Imperial <input type="radio"/> Metric	
Wheel Diameter	11-13/16 "
Wheel Width	8-1/8 "
Wheel Bearing	Wheels With Ball Bearings
Plate Size	10-1/16 " x 8 "
Bolt Hole Spacing	8-17/64 " x 6-19/64 "
Plate Hole	7/8 "
Offset	3 "
Swivel Interference	19-1/2 "
Overall Height	15-23/64 "
Swivel Radius	9-15/16 "
Hardness Of Tread	93±5° Shore A
Load Capacity (Dynamic)	10803lbs
Load Capacity (Static)	16204lbs
Temperature	-4°F to +158°F
Fork Type	Swivel Caster With Rear Brake
Stainless	N/A
Electrical Conductivity	N/A
Anti-Static	N/A
Weight	140.4lbs
Standard	ISO22883

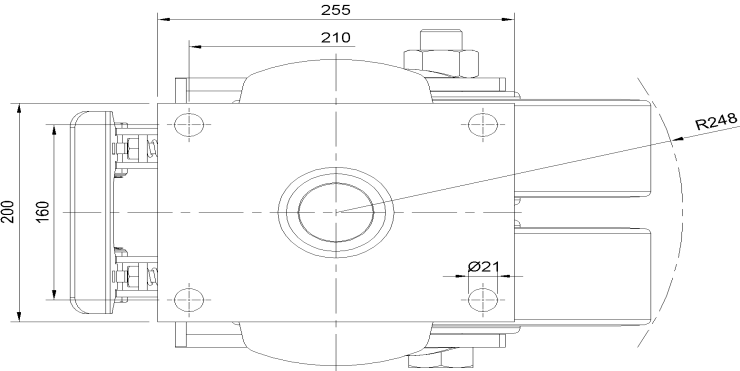
Advantages at a glance

Rolling Resistance	● ● ● ○ ○
Operating Noise	● ● ● ● ○
Floor Surface Preservation	● ● ● ● ○

Dimensions



Mounting



* For any deviation between metric and imperial spec, please refer to the metric spec.