

1162D Super Heavy Duty Casters Series (Double Wheel)



MC Nylon Wheel (Off-White) Wheel Diameter×Wheel Width 350×95mm

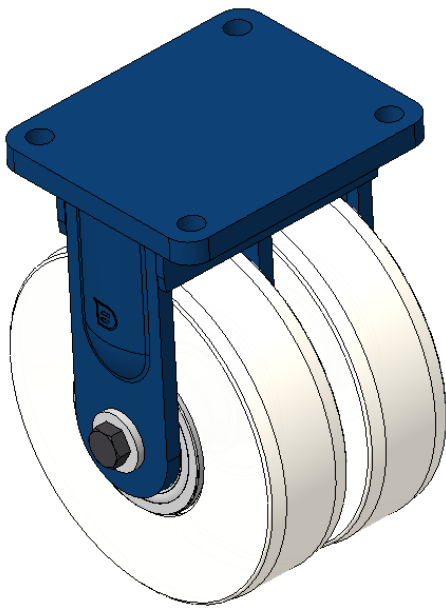
EAN

KS-11621400071311

Rigid Casters, Welded Caster Fork, blue paint finish. Base plate Mounting Type device, 210x160mm Bolt Hole Spacing. Reinforced Polypropylene Wheel Center and Wheel Tread, off-white. Bearing—slanted ball bearing.

Wheel Tread: Hhigh-Quality Polyurethane
Wheel Center: Iron core / Cast iron core

Drawings are for reference only and may differ from the product



Picture may differ from original product

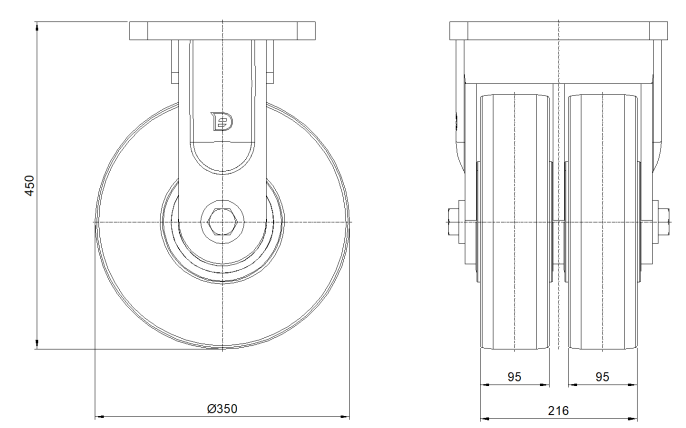
Technical Data

<input checked="" type="radio"/> Metric <input type="radio"/> Imperial	
Wheel Diameter	350mm
Wheel Width	216mm
Wheel Bearing	Wheels With Ball Bearings
Plate Size	300 x 255mm
Bolt Hole Spacing	240x 200mm
Plate Hole	26mm
Overall Height	450mm
Hardness Of Tread	82±5° Shore D
Load Capacity (Dynamic)	11300kgs
Load Capacity (Static)	16950kgs
Temperature	-25°C to +80°C
Fork Type	Rigid Caster
Stainless	N/A
Electrical Conductivity	N/A
Anti-Static	N/A
Weight	61.53kgs
Standard	ISO22883

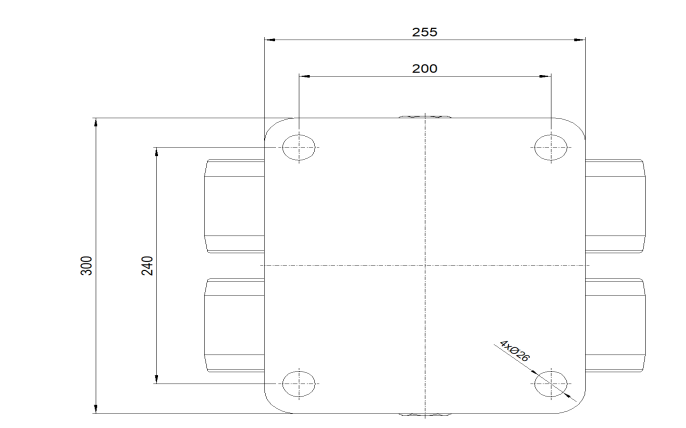
Advantages at a glance

Rolling Resistance	● ● ● ● ●
Operating Noise	● ● ○ ○ ○
Floor Surface Preservation	● ● ○ ○ ○

Dimensions



Mounting



* For any deviation between metric and imperial spec, please refer to the metric spec.