

1162D Super Heavy Duty Casters Series (Double Wheel)



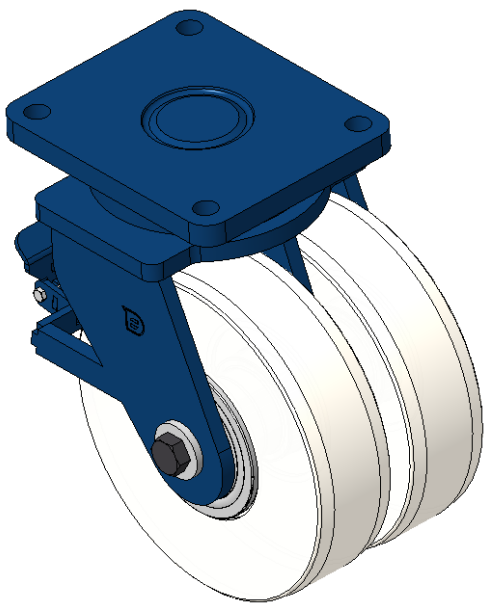
MC Nylon Wheel (Off-White) Wheel Diameter×Wheel Width 350×95mm

EAN
KS-11621400074311

Rear brake Caster, Welded Caster Fork, blue paint finish
Base plate Mounting Type device, 210x160mm Bolt Hole Spacing
Reinforced Polypropylene Wheel Center and Wheel Tread, off-white
Bearing—slanted ball bearing

Wheel surface: thermoplastic
Wheel Center: thermoplastic

Drawings are for reference only and may differ from the product



Picture may differ from original product

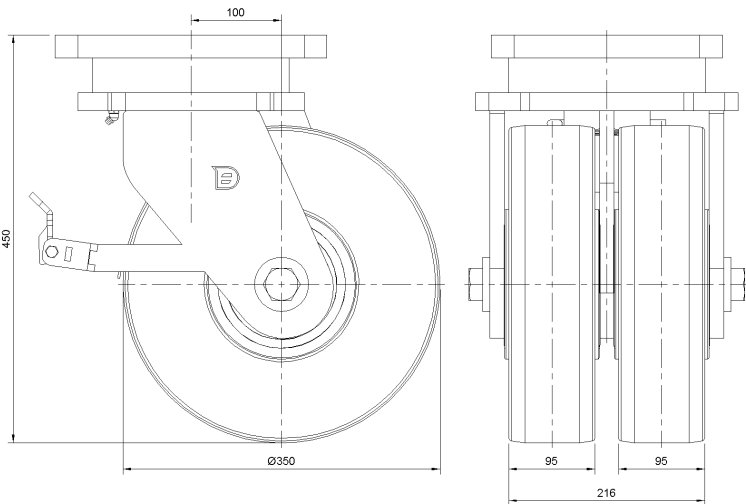
Technical Data

<input checked="" type="radio"/> Imperial <input type="radio"/> Metric	
Wheel Diameter	14 "
Wheel Width	8-1/2 "
Wheel Bearing	Wheels With Ball Bearings
Plate Size	12 " x 10-1/16 "
Bolt Hole Spacing	9-29/64 " x 7-7/8 "
Plate Hole	1-1/16 "
Offset	4 "
Swivel Interference	23-5/32 "
Overall Height	17-23/32 "
Swivel Radius	11-5/8 "
Hardness Of Tread	82±5° Shore D
Load Capacity (Dynamic)	24912lbs
Load Capacity (Static)	37368lbs
Temperature	-13°F to +176°F
Fork Type	Swivel Caster With Rear Brake
Stainless	N/A
Electrical Conductivity	N/A
Anti-Static	N/A
Weight	174.6lbs
Standard	ISO22883

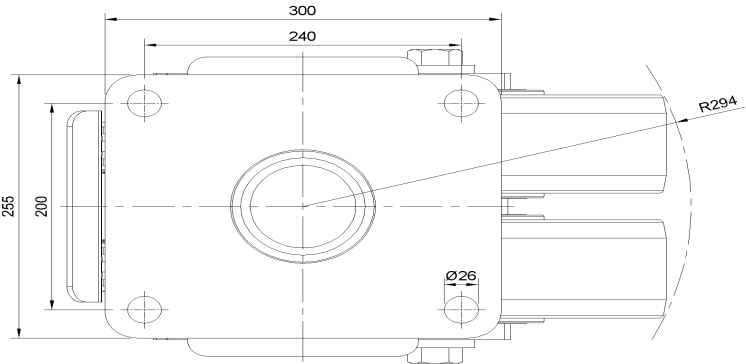
Advantages at a glance

Rolling Resistance	● ● ● ● ●
Operating Noise	● ● ○ ○ ○
Floor Surface Preservation	● ● ○ ○ ○

Dimensions



Mounting



* For any deviation between metric and imperial spec, please refer to the metric spec.