

1162 Super Heavy Duty Casters Series (Single Wheel)



VQPU (brown round) Wheel Diameter x Wheel Width 350 x 90mm

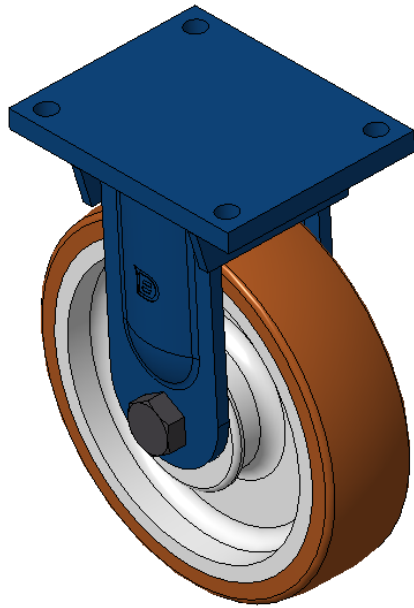
EAN

KS-11621400541111

Rigid Caster with Welded Caster Fork, blue painted finish Mounting Type - Top Plate, 210x160 Bolt Hole Spacing Cast Iron Wheel Center with High Quality Polyurethane tread, Cast Iron brown Bearing - Taper Roller Bearing

Wheel tread: Made of high-quality polyurethane
Wheel Center: iron core/cast iron core

Drawings are for reference only and may differ from the product



Picture may differ from original product

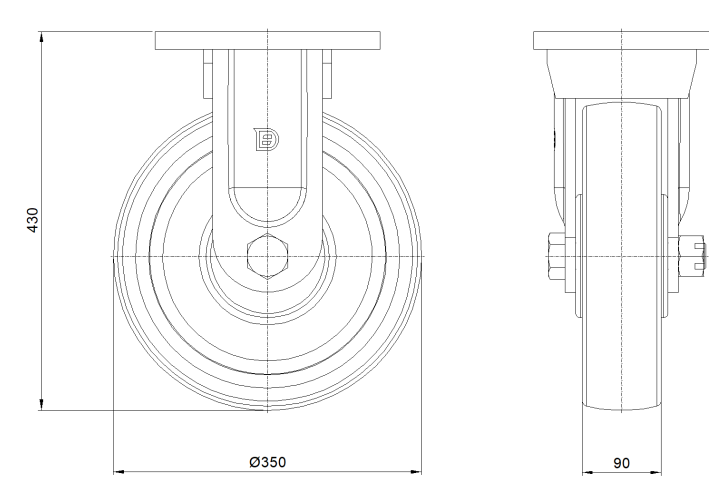
Technical Data

<input checked="" type="radio"/> Metric <input type="radio"/> Imperial	
Wheel Diameter	350mm
Wheel Width	90mm
Wheel Bearing	Wheel With Taper Roller Bearings
Plate Size	255 x 200mm
Bolt Hole Spacing	210 x 160mm
Plate Hole	21mm
Overall Height	430mm
Hardness Of Tread	92±5° Shore A
Load Capacity (Dynamic)	2800kgs
Load Capacity (Static)	4200kgs
Temperature	-20°C to +70°C
Fork Type	Rigid Caster
Stainless	N/A
Electrical Conductivity	N/A
Anti-Static	N/A
Weight	41.85kgs
Standard	ISO22883

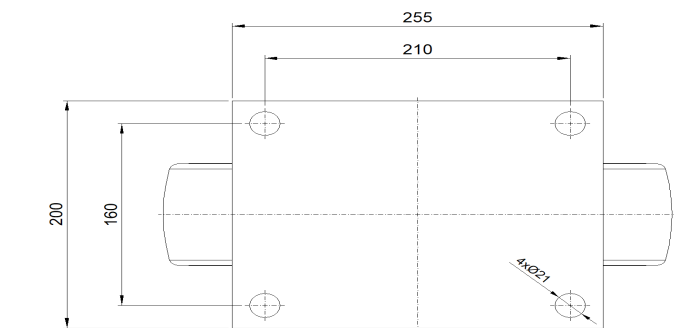
Advantages at a glance

Rolling Resistance	● ● ● ● ●
Operating Noise	● ● ● ● ●
Floor Surface Preservation	● ● ● ● ●

Dimensions



Mounting



* For any deviation between metric and imperial spec, please refer to the metric spec.