

Product Information Sheet

1162D Super Heavy Duty Casters Series (Double Wheel)



VQPU (brown round) Wheel Diameter x Wheel Width 350 x 90mm

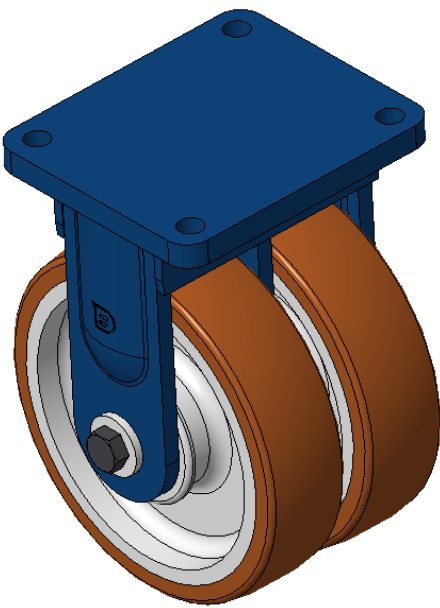
EAN

KS-11621400541311

Rigid Casters, Welded Caster Fork, blue paint finish.
Base plate Mounting Type device, 210x160mm Bolt Hole Spacing.
Cast Iron Wheel Center, High Quality Polyurethane Wheel Tread, Cast Iron brown.
Bearing—skew ball bearing.

Wheel Tread: Hhigh-Quality Polyurethane
Wheel Center: Iron core / Cast iron core

Drawings are for reference only and may differ from the product



Picture may differ from original product

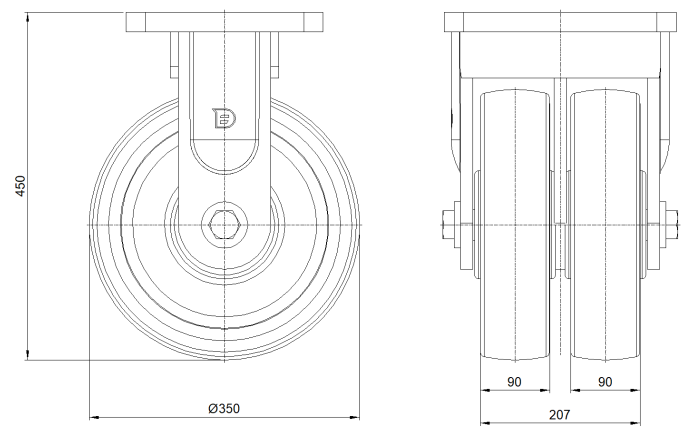
Technical Data

<input checked="" type="radio"/> Imperial <input type="radio"/> Metric	
Wheel Diameter	14 "
Wheel Width	8-1/8 "
Wheel Bearing	Wheel With Taper Roller Bearings
Plate Size	12 " x 10-1/16 "
Bolt Hole Spacing	9-29/64 " x 7-7/8 "
Plate Hole	1-1/16 "
Overall Height	17-23/32 "
Hardness Of Tread	92±5° Shore A
Load Capacity (Dynamic)	12787lbs
Load Capacity (Static)	19180lbs
Temperature	-4°F to +158°F
Fork Type	Rigid Caster
Stainless	N/A
Electrical Conductivity	N/A
Anti-Static	N/A
Weight	182.3lbs
Standard	ISO22883

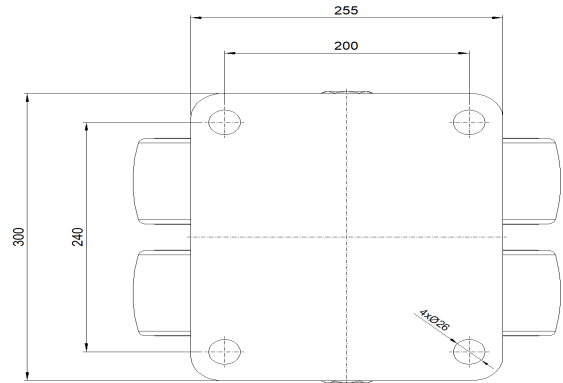
Advantages at a glance

Rolling Resistance	● ● ● ● ●
Operating Noise	● ● ● ● ●
Floor Surface Preservation	● ● ● ● ●

Dimensions



Mounting



* For any deviation between metric and imperial spec, please refer to the metric spec.