



1162 Super Heavy Duty Casters Series (Single Wheel)

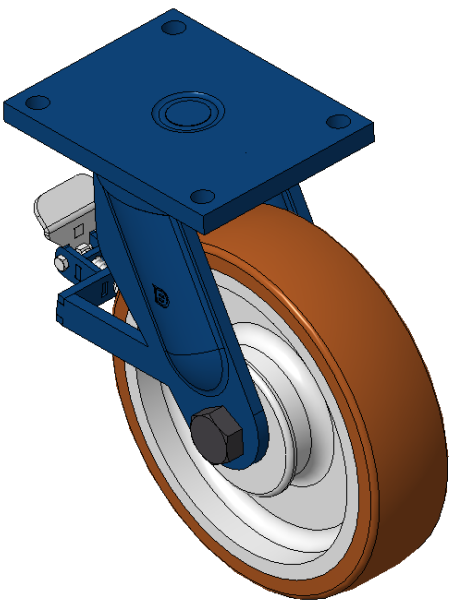
VQPU (brown round) Wheel Diameter x Wheel Width 350 x 90mm

EAN
KS-11621400544111

Rear brake Caster, Welded Caster Fork, blue paint finish.
Base plate Mounting Type device, 210x160mm Bolt Hole Spacing.
Cast Iron wheel Wheel Wheel Hub, High Quality Polyurethane Wheel Tread, Cast Iron brown.
Bearing—skew ball bearing.

Wheel Tread: Hhigh-Quality Polyurethane
Wheel Center: Iron core/Cast iron core

Drawings are for reference only and may differ from the product



Picture may differ from original product

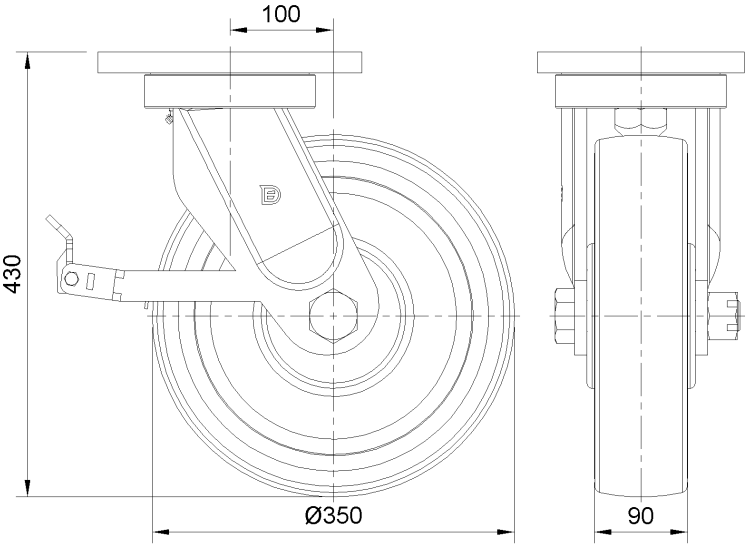
Technical Data

<input checked="" type="radio"/> Metric <input type="radio"/> Imperial	
Wheel Diameter	350mm
Wheel Width	90mm
Wheel Bearing	Wheel With Taper Roller Bearings
Plate Size	255 x 200mm
Bolt Hole Spacing	210 x 160mm
Plate Hole	21mm
Offset	100mm
Swivel Interference	560mm
Overall Height	430mm
Swivel Radius	280mm
Hardness Of Tread	92±5° Shore A
Load Capacity (Dynamic)	3200kgs
Load Capacity (Static)	4800kgs
Temperature	-20°C to +70°C
Fork Type	Swivel Caster With Rear Brake
Stainless	N/A
Electrical Conductivity	N/A
Anti-Static	N/A
Weight	45.27kgs
Standard	ISO22883

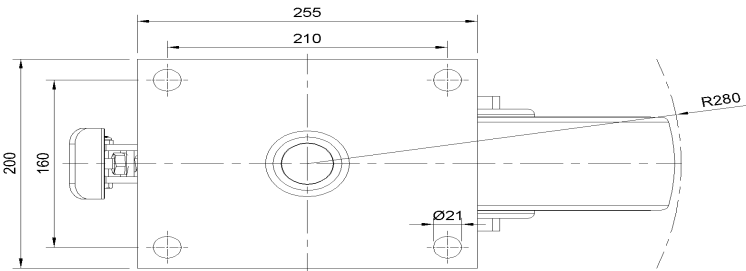
Advantages at a glance

Rolling Resistance	● ● ● ● ●
Operating Noise	● ● ● ● ●
Floor Surface Preservation	● ● ● ● ●

Dimensions



Mounting



* For any deviation between metric and imperial spec, please refer to the metric spec.