

1162D Super Heavy Duty Casters Series (Double Wheel)



VXPU (burgundy round) Wheel Diameter x Wheel Width 350 x 90mm

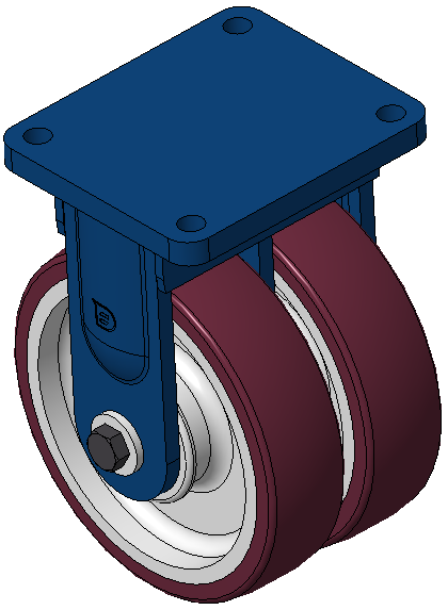
EAN

KS-11621400691311

Rigid Casters, Welded Caster Fork, blue paint finish.  
Base plate Mounting Type device, 210x160mm Bolt Hole Spacing.  
Cast Iron Wheel Center, High Quality Polyurethane Wheel Tread, Cast Iron in burgundy.  
Bearing—skew ball bearing.

Wheel Tread: Hhigh-Quality Polyurethane  
Wheel Center: Iron core / Cast iron core

Drawings are for reference only and may differ from the product



Picture may differ from original product

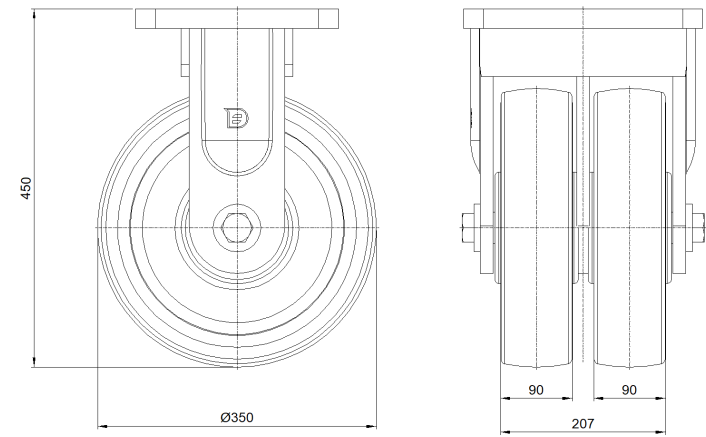
Technical Data

<input checked="" type="radio"/> Metric <input type="radio"/> Imperial	
Wheel Diameter	350mm
Wheel Width	207mm
Wheel Bearing	Wheels With Ball Bearings
Plate Size	300 x 255mm
Bolt Hole Spacing	240x 200mm
Plate Hole	26mm
Overall Height	450mm
Hardness Of Tread	93±5° Shore A
Load Capacity (Dynamic)	5800kgs
Load Capacity (Static)	8700kgs
Temperature	-20°C to +70°C
Fork Type	Rigid Caster
Stainless	N/A
Electrical Conductivity	N/A
Anti-Static	N/A
Weight	82.70kgs
Standard	ISO22883

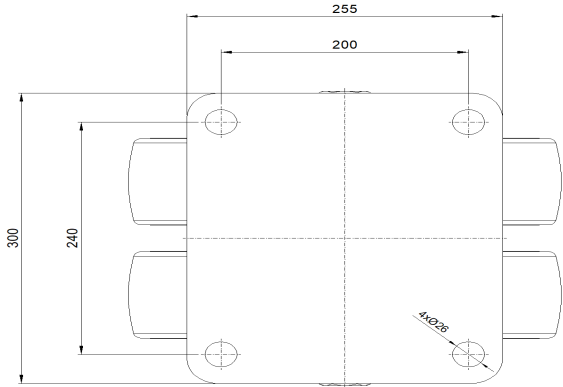
Advantages at a glance

Rolling Resistance	● ● ● ○ ○
Operating Noise	● ● ● ● ○
Floor Surface Preservation	● ● ● ● ○

Dimensions



Mounting



\* For any deviation between metric and imperial spec, please refer to the metric spec.