



1162 Super Heavy Duty Casters Series (Single Wheel)

VXPU (burgundy round) Wheel Diameter x Wheel Width 350 x 90mm

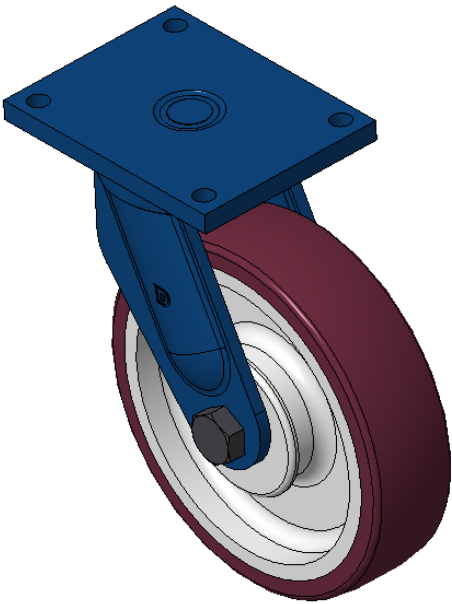
EAN

KS-11621400692111

Swivel Caster with Welded Caster Fork, blue paint finish Mounting Type - Top Plate, 210x160 Bolt Hole Spacing Cast Iron Wheel Center, High Quality Polyurethane tread, Cast Iron burgundy Bearing: Taper Roller Bearing

Wheel tread: Made of high-quality polyurethane
Wheel Center: iron core/cast iron core

Drawings are for reference only and may differ from the product



Picture may differ from original product

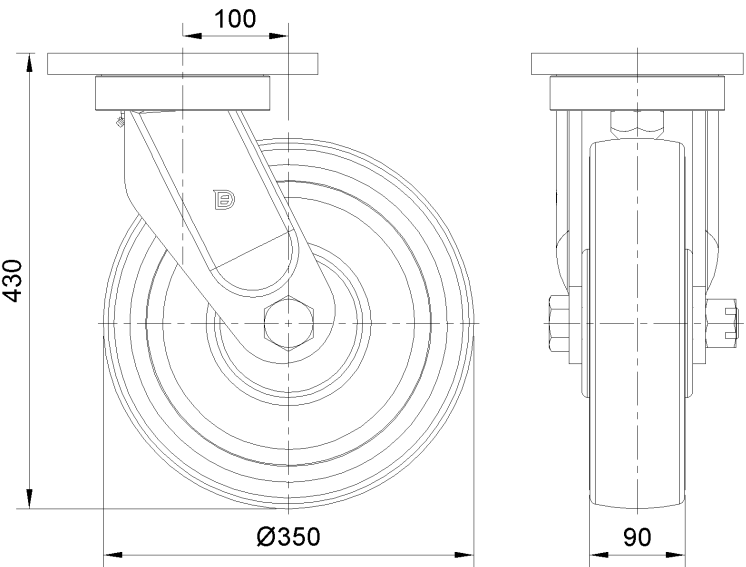
Technical Data

<input checked="" type="radio"/> Imperial <input type="radio"/> Metric	
Wheel Diameter	14 "
Wheel Width	3-9/16 "
Wheel Bearing	Wheels With Ball Bearings
Plate Size	10-1/16 " x 8 "
Bolt Hole Spacing	8-17/64 " x 6-19/64 "
Plate Hole	7/8 "
Offset	4 "
Swivel Interference	21-7/8 "
Overall Height	16-15/16 "
Swivel Radius	11 "
Hardness Of Tread	93±5° Shore A
Load Capacity (Dynamic)	7055lbs
Load Capacity (Static)	10582lbs
Temperature	-4°F to +158°F
Fork Type	Swivel Caster
Stainless	N/A
Electrical Conductivity	N/A
Anti-Static	N/A
Weight	99.8lbs
Standard	ISO22883

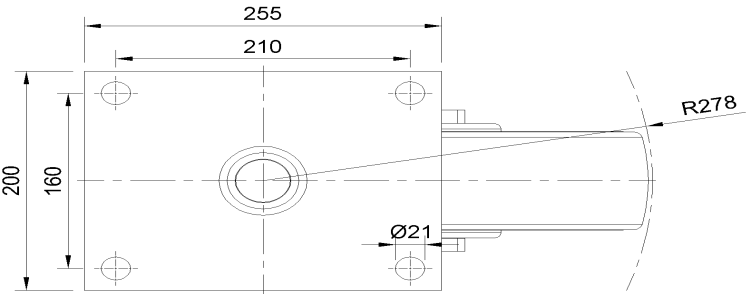
Advantages at a glance

Rolling Resistance	● ● ● ○ ○
Operating Noise	● ● ● ● ○
Floor Surface Preservation	● ● ● ● ○

Dimensions



Mounting



* For any deviation between metric and imperial spec, please refer to the metric spec.