



1163-1 Self-balancing Caster Series

QPU (brown arc) Wheel Diameter x Wheel Width 75 x 30 mm

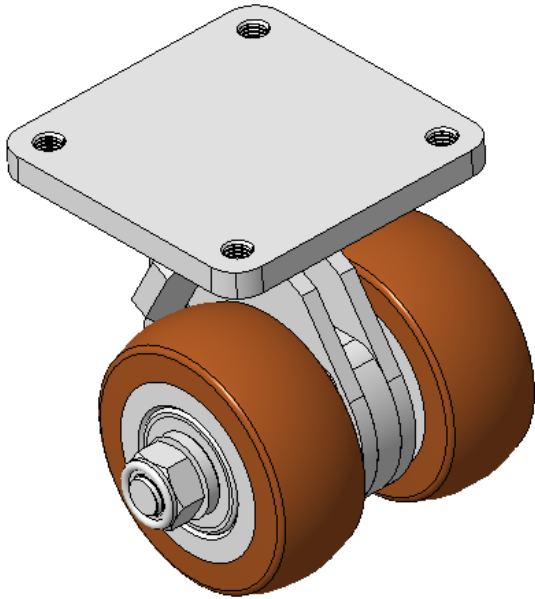
EAN

KS-11630302532023

Swivel Caster with Welded Caster Fork Extended control lever surface, Mounting Type - Top Plate, 70x70 Bolt Hole Spacing Cast Iron Wheel Center, High Quality Polyurethane tread, Cast Iron brown Bearing—special Ball Bearing for reduced Rolling Resistance ZQPU Dual Wheels, Ergonomic design for easier starting and turning

Wheel tread: Made of high-quality polyurethane  
Wheel Center: iron core/cast iron core

Drawings are for reference only and may differ from the product



Picture may differ from original product

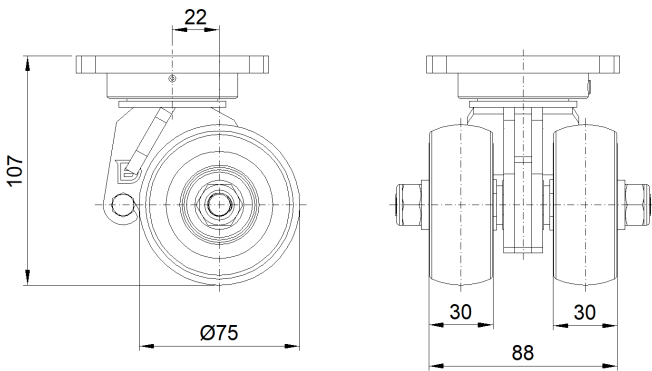
Technical Data

<input checked="" type="radio"/> Metric <input type="radio"/> Imperial	
Wheel Diameter	75mm
Wheel Width	88mm
Wheel Bearing	Wheel With Taper Roller Bearings
Plate Size	90 x 90mm
Bolt Hole Spacing	70 x 70mm
Plate Hole	6.8mm
Offset	22mm
Swivel Interference	144mm
Overall Height	107mm
Swivel Radius	72mm
Hardness Of Tread	92±5° Shore A
Load Capacity (Dynamic)	300kgs
Load Capacity (Static)	450kgs
Temperature	-20°C to +70°C
Fork Type	Swivel Caster
Stainless	N/A
Electrical Conductivity	N/A
Anti-Static	N/A
Weight	8.74kgs
Standard	ISO22883

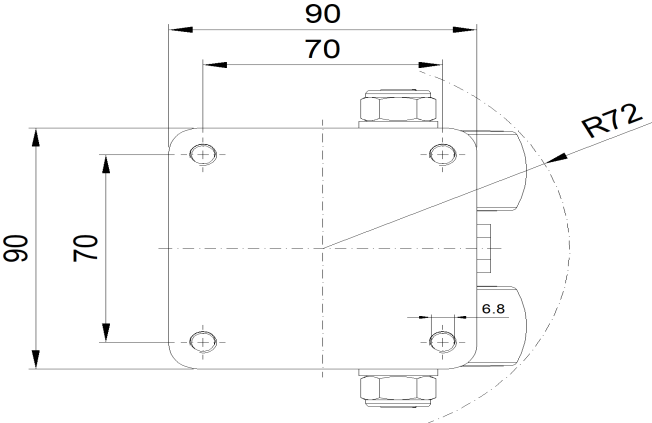
Advantages at a glance

Rolling Resistance	● ● ● ● ●
Operating Noise	● ● ● ● ●
Floor Surface Preservation	● ● ● ● ●

Dimensions



Mounting



\* For any deviation between metric and imperial spec, please refer to the metric spec.