



1163-1 Self-balancing Caster Series

QPU (brown arc) Wheel Diameter x Wheel Width 75 x 30 mm

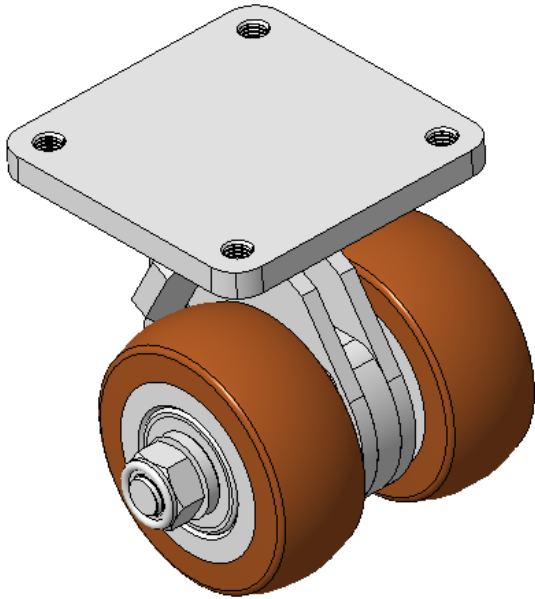
EAN

KS-11630302532023

Swivel Caster with Welded Caster Fork Extended control lever surface, Mounting Type - Top Plate, 70x70 Bolt Hole Spacing Cast Iron Wheel Center, High Quality Polyurethane tread, Cast Iron brown Bearing—special Ball Bearing for reduced Rolling Resistance ZQPU Dual Wheels, Ergonomic design for easier starting and turning

Wheel tread: Made of high-quality polyurethane  
Wheel Center: iron core/cast iron core

Drawings are for reference only and may differ from the product



Picture may differ from original product

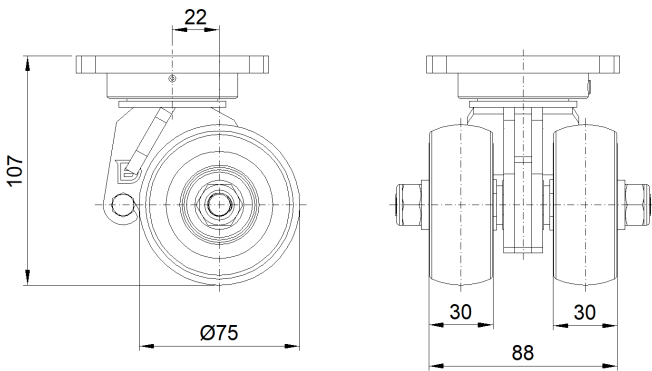
Technical Data

<input checked="" type="radio"/> Imperial <input type="radio"/> Metric	
Wheel Diameter	3 "
Wheel Width	3-1/2 "
Wheel Bearing	Wheel With Taper Roller Bearings
Plate Size	3-9/16 " x 3-9/16 "
Bolt Hole Spacing	2-3/4 " x 2-3/4 "
Plate Hole	1/4 "
Offset	7/8 "
Swivel Interference	5-3/4 "
Overall Height	4-1/4 "
Swivel Radius	2-7/8 "
Hardness Of Tread	92±5° Shore A
Load Capacity (Dynamic)	661lbs
Load Capacity (Static)	992lbs
Temperature	-4°F to +158°F
Fork Type	Swivel Caster
Stainless	N/A
Electrical Conductivity	N/A
Anti-Static	N/A
Weight	19.3lbs
Standard	ISO22883

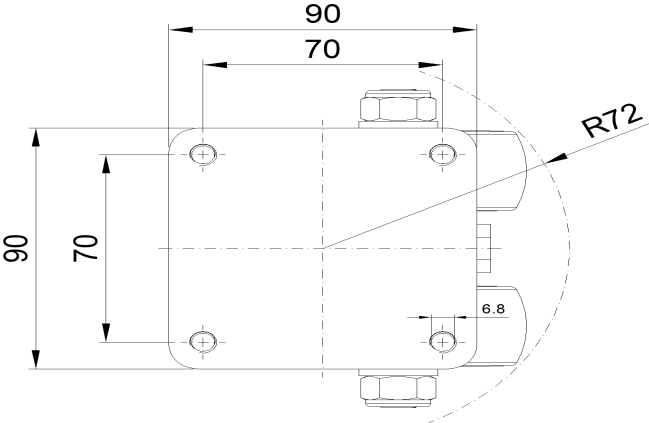
Advantages at a glance

Rolling Resistance	● ● ● ● ●
Operating Noise	● ● ● ● ●
Floor Surface Preservation	● ● ● ● ●

Dimensions



Mounting



\* For any deviation between metric and imperial spec, please refer to the metric spec.