



1163-1 Self-balancing Caster Series

ZQPU (milling blue) Wheel Diameter x Wheel Width 75 x 20mm

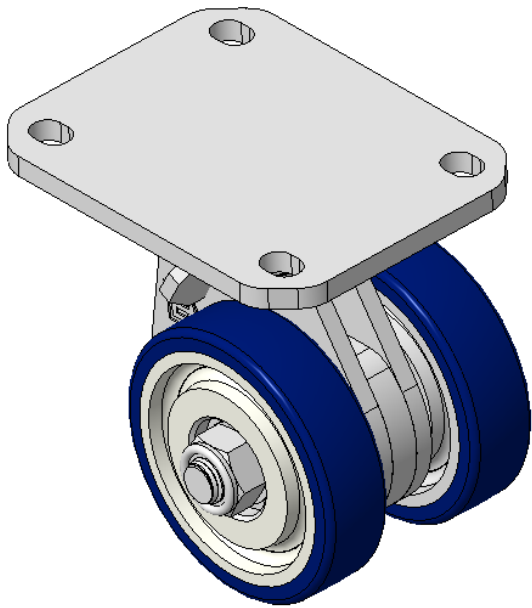
EAN

KS-11630302802013

Swivel Caster with Welded Caster Fork Extended control lever surface, Mounting Type - Top Plate, 80x60 Bolt Hole Spacing Cast Iron Wheel Center, High Quality Polyurethane tread, blue Cast Iron Bearing—special Ball Bearing for reduced Rolling Resistance ZQPU Dual Wheels, Ergonomic design for easier starting and turning

Wheel tread: Made of high-quality polyurethane
Wheel Center: iron core/cast iron core

Drawings are for reference only and may differ from the product



Picture may differ from original product

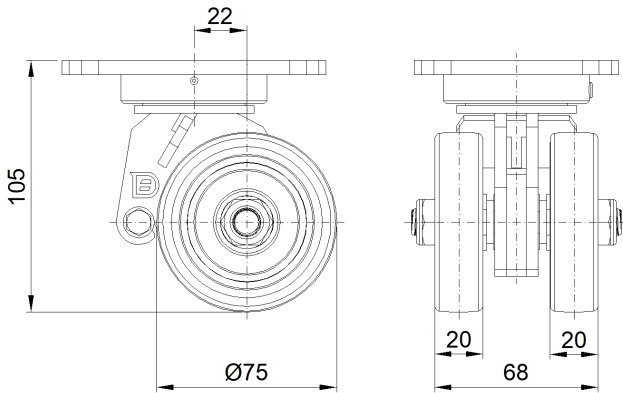
Technical Data

<input checked="" type="radio"/> Metric <input type="radio"/> Imperial	
Wheel Diameter	75mm
Wheel Width	68mm
Wheel Bearing	Wheels With Ball Bearings
Plate Size	110 x 85mm
Bolt Hole Spacing	80 x 60mm
Plate Hole	129mm
Offset	22mm
Swivel Interference	138mm
Overall Height	105mm
Swivel Radius	69mm
Hardness Of Tread	87±5° Shore A
Load Capacity (Dynamic)	650kgs
Load Capacity (Static)	975kgs
Temperature	-20°C to +70°C
Fork Type	Swivel Caster
Stainless	N/A
Electrical Conductivity	N/A
Anti-Static	N/A
Weight	3.44kgs
Standard	ISO22883

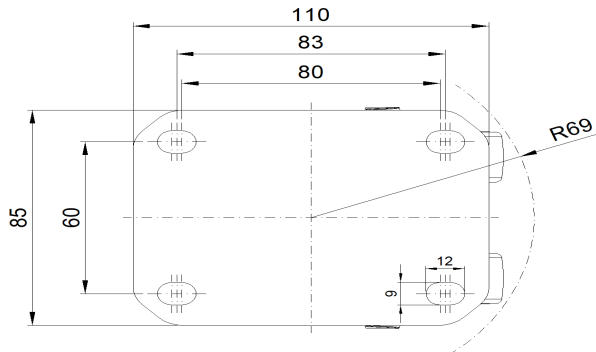
Advantages at a glance

Rolling Resistance	● ● ● ● ●
Operating Noise	● ● ● ● ●
Floor Surface Preservation	● ● ● ● ●

Dimensions



Mounting



* For any deviation between metric and imperial spec, please refer to the metric spec.