



1163-1 Self-balancing Caster Series

QPU (Brown round) Wheel Diameter × Wheel Width 100 x 34mm

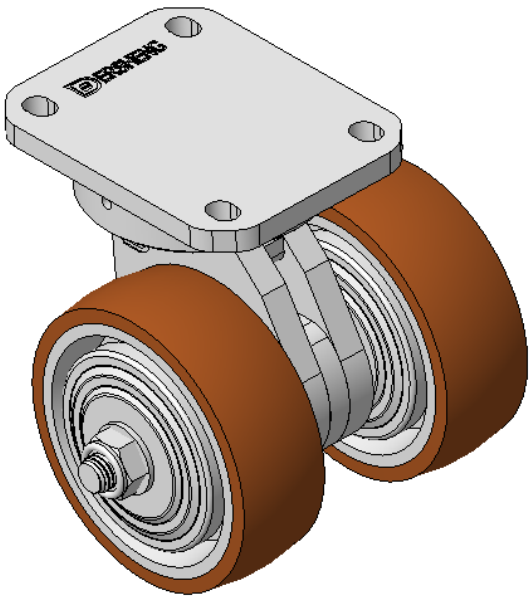
EAN

KS-11630402532013

Swivel Caster with Welded Caster Fork, Zine-Plated finish  
Mounting Type - Top Plate, 80x60 Bolt Hole Spacing  
Cast Iron core, High Quality Polyurethane Wheel Tread  
Cast Iron brown, Bearing – Ball Bearings

Wheel tread: Made of high-quality polyurethane  
Wheel Center: iron core/cast iron

Drawings are for reference only and may differ from the product



Picture may differ from original product

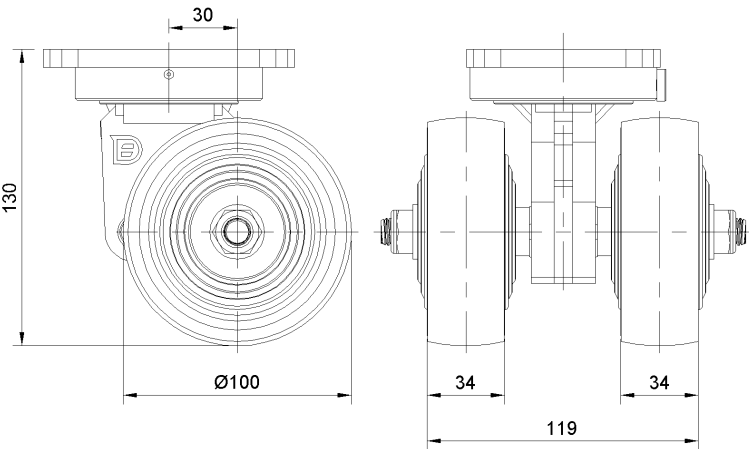
Technical Data

<input checked="" type="radio"/> Metric <input type="radio"/> Imperial	
Wheel Diameter	100mm
Wheel Width	119mm
Wheel Bearing	Wheels With Ball Bearings
Plate Size	110 x 85mm
Bolt Hole Spacing	80 x 60mm
Plate Hole	129mm
Offset	30mm
Swivel Interference	198mm
Overall Height	130mm
Swivel Radius	98mm
Hardness Of Tread	92±5° Shore A
Load Capacity (Dynamic)	400kgs
Load Capacity (Static)	600kgs
Temperature	-20°C to +70°C
Fork Type	Swivel Caster
Stainless	N/A
Electrical Conductivity	N/A
Anti-Static	N/A
Weight	8.48kgs
Standard	ISO22883

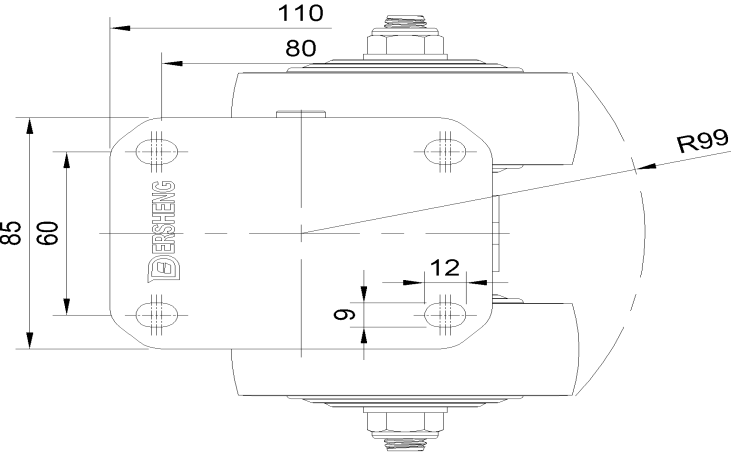
Advantages at a glance

Rolling Resistance	● ● ● ● ●
Operating Noise	● ● ● ● ●
Floor Surface Preservation	● ● ● ● ●

Dimensions



Mounting



\* For any deviation between metric and imperial spec, please refer to the metric spec.