



1163-1 Self-balancing Caster Series

QPU (brown round) Wheel Diameter × Wheel Width 100 x 34mm

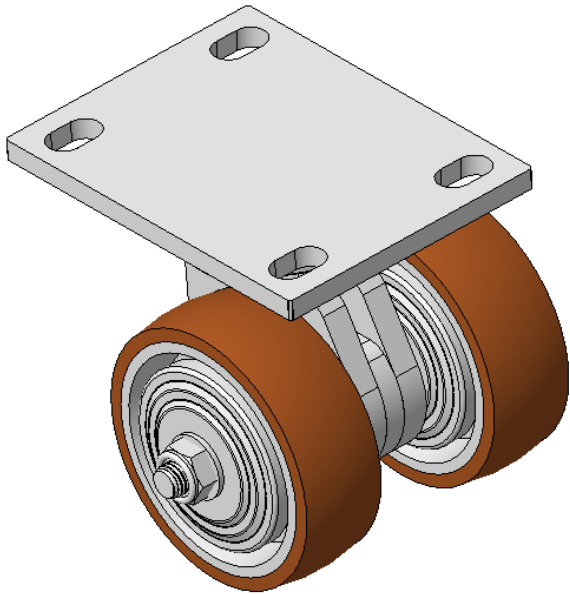
EAN

KS-11630402532023

Swivel Caster, Welded Caster Fork, Zine-Plated finish
Mounting Type - Top Plate, 110x75 Bolt Hole Spacing
Cast Iron core, High Quality Polyurethane Wheel Tread
Cast Iron brown, Bearing—Ball Bearings

Wheel tread: Made of high-quality polyurethane
Wheel Center: iron core/cast iron

Drawings are for reference only and may differ from the product



Picture may differ from original product

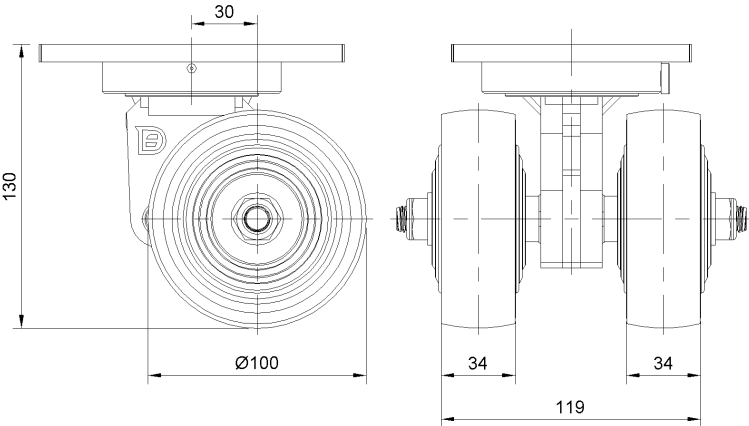
Technical Data

<input checked="" type="radio"/> Metric <input type="radio"/> Imperial	
Wheel Diameter	100mm
Wheel Width	119mm
Wheel Bearing	Wheels With Ball Bearings
Plate Size	140 x 110mm
Bolt Hole Spacing	110x75mm
Plate Hole	2213mm
Offset	30mm
Swivel Interference	198mm
Overall Height	130mm
Swivel Radius	99mm
Hardness Of Tread	92±5° Shore A
Load Capacity (Dynamic)	400kgs
Load Capacity (Static)	600kgs
Temperature	-20°C to +70°C
Fork Type	Swivel Caster
Stainless	N/A
Electrical Conductivity	N/A
Anti-Static	N/A
Weight	8.84kgs
Standard	ISO22883

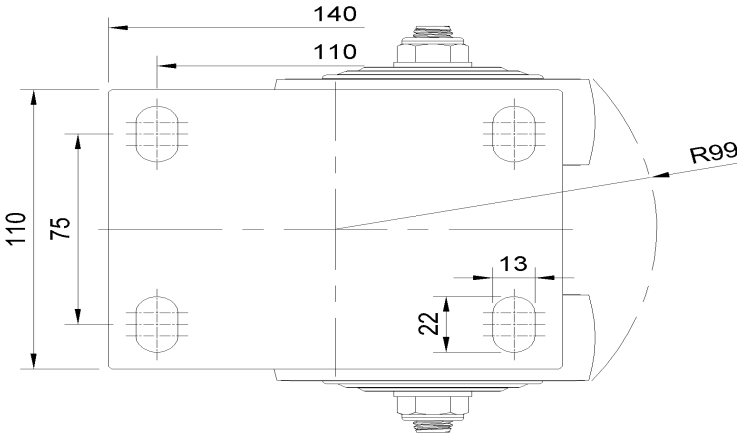
Advantages at a glance

Rolling Resistance	● ● ● ● ●
Operating Noise	● ● ● ● ●
Floor Surface Preservation	● ● ● ● ●

Dimensions



Mounting



* For any deviation between metric and imperial spec, please refer to the metric spec.