



1163-1 Self-balancing Caster Series

EQPU (brown arc) Wheel Diameter x Wheel Width 150 x 42mm

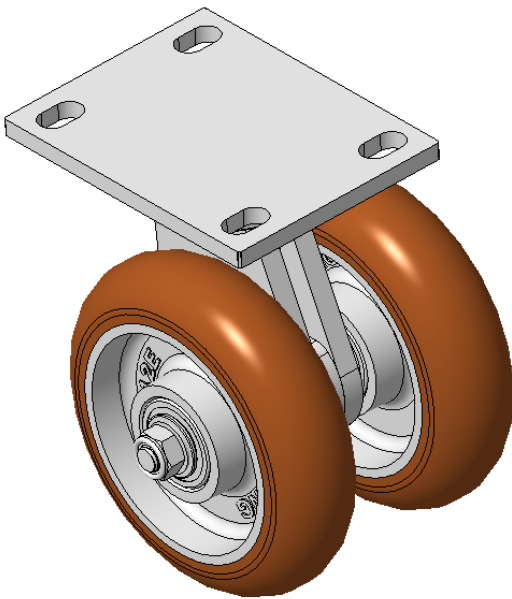
A

KS-11630602552023

Swivel Caster, Welded Caster Fork, Zine-Plated finish
Mounting Type - Top Plate, 110x75 Bolt Hole Spacing
Cast Iron core, High Quality Polyurethane Wheel Tread
Cast Iron brown, Bearing—Ball Bearings

Wheel tread: Made of high-quality polyurethane
Wheel Center: iron core/cast iron

Drawings are for reference only and may differ from the product



Picture may differ from original product

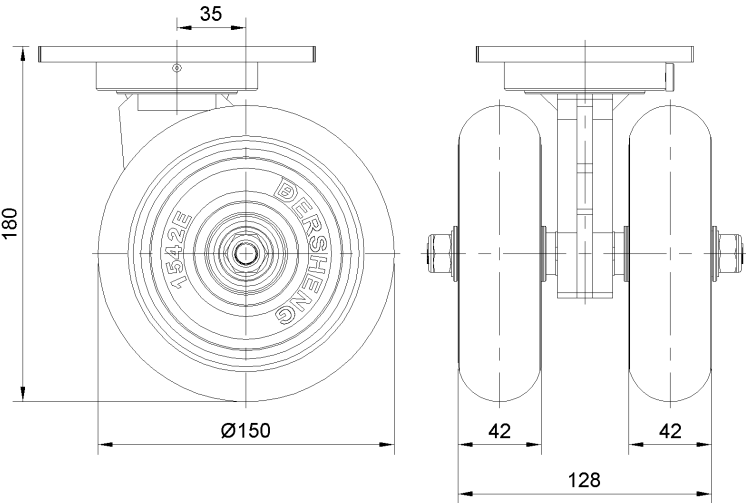
Technical Data

<input checked="" type="radio"/> Imperial <input type="radio"/> Metric	
Wheel Diameter	6 "
Wheel Width	5-1/25 "
Wheel Bearing	Wheels With Ball Bearings
Plate Size	5-9/16 " x 4-3/8 "
Bolt Hole Spacing	4-5/16 " x3"
Plate Hole	7/8 " 9/16 "
Offset	1-3/8 "
Swivel Interference	10 "
Overall Height	7-1/8 "
Swivel Radius	5 "
Hardness Of Tread	92±5° Shore A
Load Capacity (Dynamic)	1543lbs
Load Capacity (Static)	2315lbs
Temperature	-4°F to +158°F
Fork Type	Swivel Caster
Stainless	N/A
Electrical Conductivity	N/A
Anti-Static	N/A
Weight	25.5lbs
Standard	ISO22883

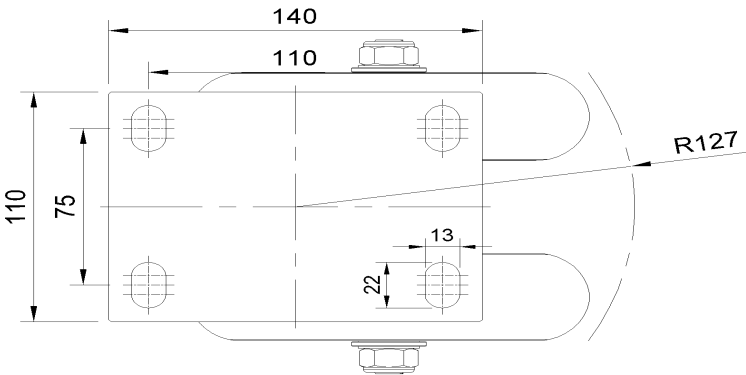
Advantages at a glance

Rolling Resistance	● ● ● ● ●
Operating Noise	● ● ● ● ●
Floor Surface Preservation	● ● ● ● ●

Dimensions



Mounting



* For any deviation between metric and imperial spec, please refer to the metric spec.