



1163-1 Self-balancing Caster Series

QPU (brown round) Wheel Diameter x Wheel Didth 80 x 42mm

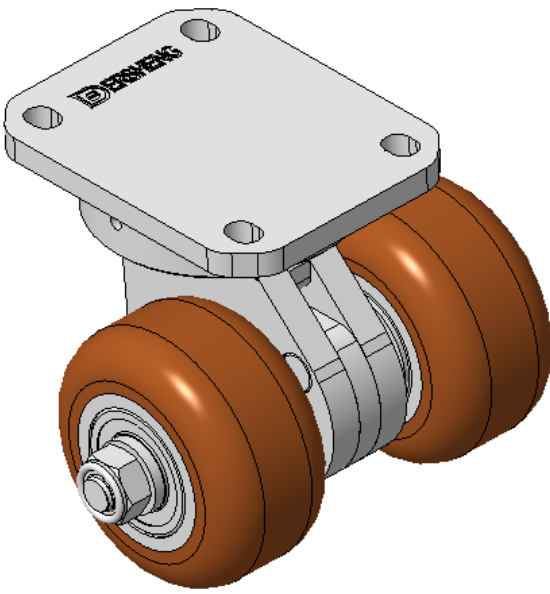
EAN

KS-11632302532213

Swivel Caster with Welded Caster Fork, Zine-Plated finish
Mounting Type - Top Plate, 80x60 Bolt Hole Spacing
Cast Iron core, High Quality Polyurethane Wheel Tread
Cast Iron brown, Bearing – Ball Bearings

Wheel tread: Made of high-quality polyurethane
Wheel Center: iron core/cast iron

Drawings are for reference only and may differ from the product



Picture may differ from original product

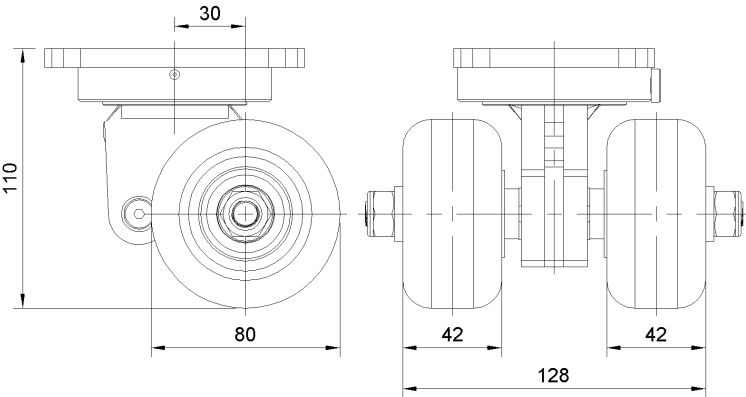
Technical Data

| | |
|--|---------------------------|
| <input checked="" type="radio"/> Metric <input type="radio"/> Imperial | |
| Wheel Diameter | 80mm |
| Wheel Width | 128mm |
| Wheel Bearing | Wheels With Ball Bearings |
| Plate Size | 110 x 85mm |
| Bolt Hole Spacing | 80 x 60mm |
| Plate Hole | 129mm |
| Offset | 30mm |
| Swivel Interference | 186mm |
| Overall Height | 110mm |
| Swivel Radius | 93mm |
| Hardness Of Tread | 92±5° Shore A |
| Load Capacity (Dynamic) | 550kgs |
| Load Capacity (Static) | 825kgs |
| Temperature | -20°C to +70°C |
| Fork Type | Swivel Caster |
| Stainless | N/A |
| Electrical Conductivity | N/A |
| Anti-Static | N/A |
| Weight | 5.07kgs |
| Standard | ISO22883 |

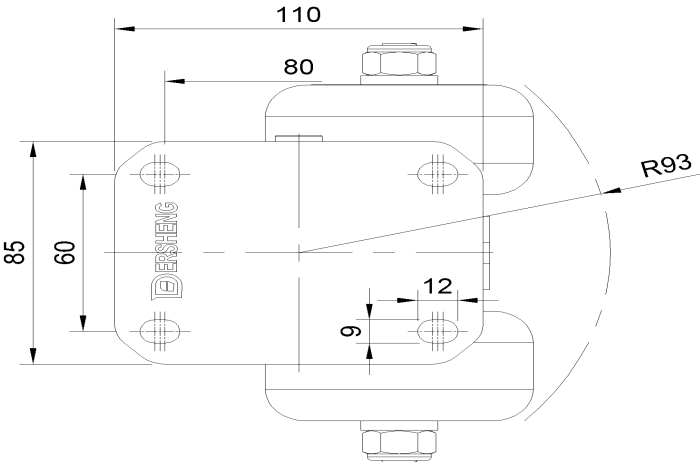
Advantages at a glance

| | |
|----------------------------|-----------|
| Rolling Resistance | ● ● ● ● ● |
| Operating Noise | ● ● ● ● ● |
| Floor Surface Preservation | ● ● ● ● ● |

Dimensions



Mounting



* For any deviation between metric and imperial spec, please refer to the metric spec.