



1163-1 Self-balancing Caster Series

QPU (brown round) Wheel Diameter x Wheel Didth 80 x 42mm

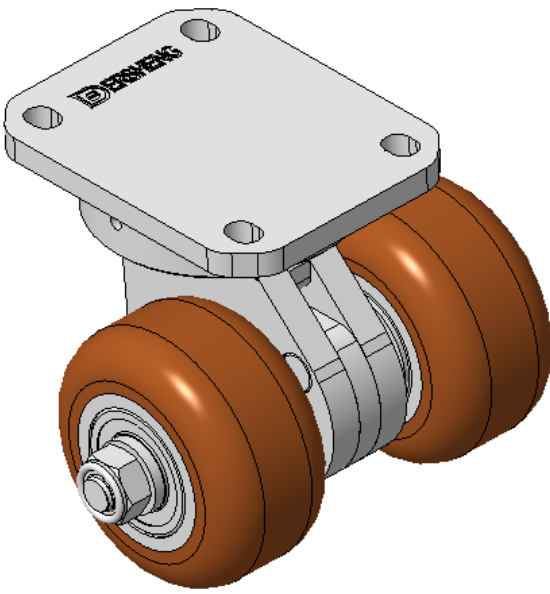
EAN

KS-11632302532213

Swivel Caster with Welded Caster Fork, Zine-Plated finish  
Mounting Type - Top Plate, 80x60 Bolt Hole Spacing  
Cast Iron core, High Quality Polyurethane Wheel Tread  
Cast Iron brown, Bearing – Ball Bearings

Wheel tread: Made of high-quality polyurethane  
Wheel Center: iron core/cast iron

Drawings are for reference only and may differ from the product



Picture may differ from original product

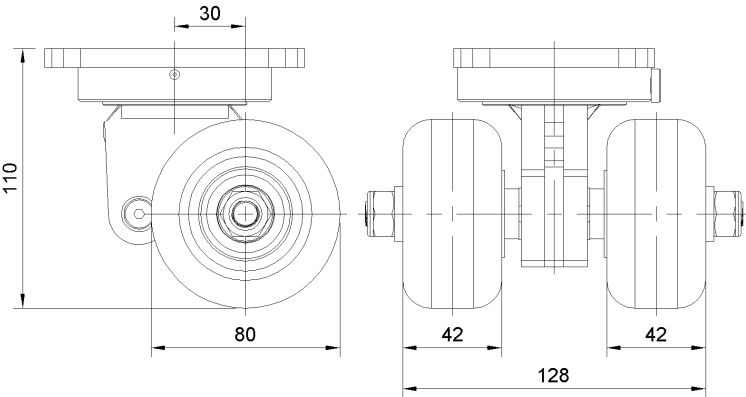
Technical Data

<input checked="" type="radio"/> Imperial <input type="radio"/> Metric	
Wheel Diameter	3-3/16 "
Wheel Width	5-1/25 "
Wheel Bearing	Wheels With Ball Bearings
Plate Size	4-3/8 " x 3-7/16 "
Bolt Hole Spacing	3-3/16 " x 2-7/16 "
Plate Hole	1/2 " 23/64 "
Offset	1-3/16 "
Swivel Interference	7-7/16 "
Overall Height	4-3/8 "
Swivel Radius	3-11/16 "
Hardness Of Tread	92±5° Shore A
Load Capacity (Dynamic)	1213lbs
Load Capacity (Static)	1819lbs
Temperature	-4°F to +158°F
Fork Type	Swivel Caster
Stainless	N/A
Electrical Conductivity	N/A
Anti-Static	N/A
Weight	11.2lbs
Standard	ISO22883

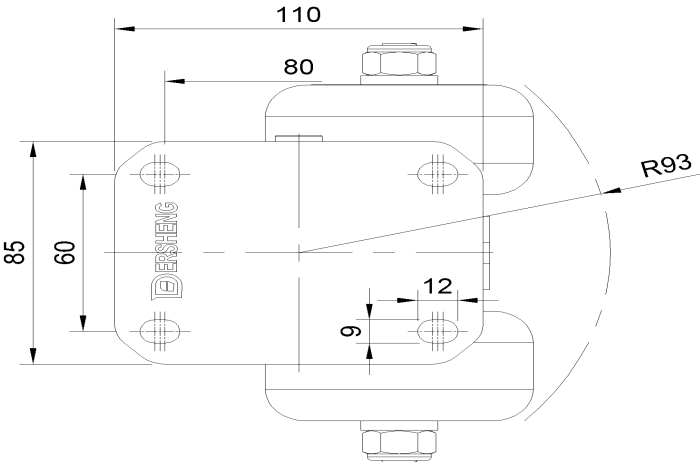
Advantages at a glance

Rolling Resistance	● ● ● ● ●
Operating Noise	● ● ● ● ●
Floor Surface Preservation	● ● ● ● ●

Dimensions



Mounting



\* For any deviation between metric and imperial spec, please refer to the metric spec.