

1165-1 Heavy Duty AMR/AGV Spring-Loading Caster Wheel Series



QPU (blue round) Wheel Diameter × Wheel Width 50 × 45mm

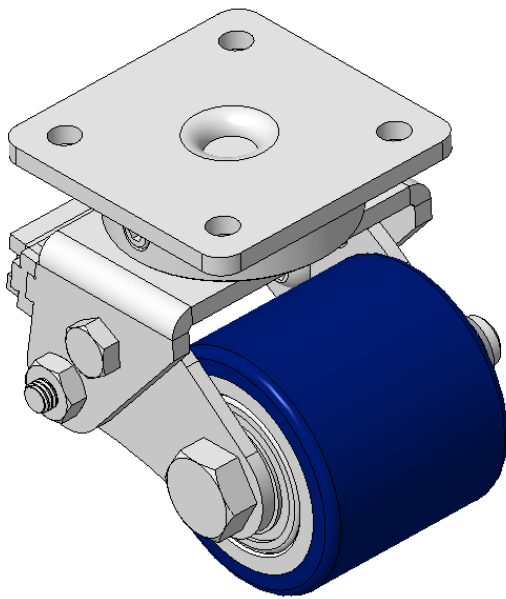
EAN

KS-11650200532033

Spring-loaded Caster with Welded Caster Fork
Zine-Plated, Mounting Type - Top Plate, 42.5 x 42.5 Bolt Hole Spacing
Cast Iron core with High Quality Polyurethane Wheel Tread
Blue finish, Bearing—Ball Bearings

Wheel Tread: Hhigh-Quality Polyurethane
Wheel Center: iron core/cast iron core

Drawings are for reference only and may differ from the product



Picture may differ from original product

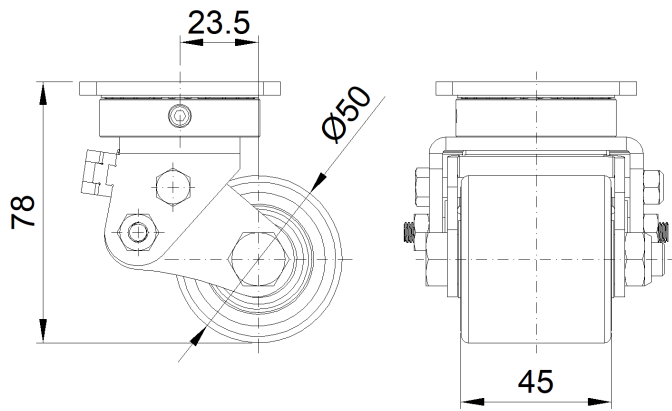
Technical Data

| | |
|------------------------------------------------------------------------|---------------------------|
| <input checked="" type="radio"/> Imperial <input type="radio"/> Metric | |
| Wheel Diameter | 2 " |
| Wheel Width | 1-13/16 " |
| Wheel Bearing | Wheels With Ball Bearings |
| Plate Size | 2-7/16 " x 2-7/16 " |
| Bolt Hole Spacing | 1-11/16"x1-11/16" |
| Plate Hole | 1/4 " |
| Offset | 15/16 " |
| Swivel Interference | 4-3/8 " |
| Overall Height | 3-1/8 " |
| Swivel Radius | 2-3/16 " |
| Hardness Of Tread | 87±5° Shore A |
| Load Capacity (Dynamic) | 110lbs |
| Load Capacity (Static) | 165lbs |
| Temperature | -4°F to +158°F |
| Fork Type | Swivel Caster |
| Stainless | N/A |
| Electrical Conductivity | N/A |
| Anti-Static | N/A |
| Weight | 2.0lbs |
| Standard | ISO22883 |

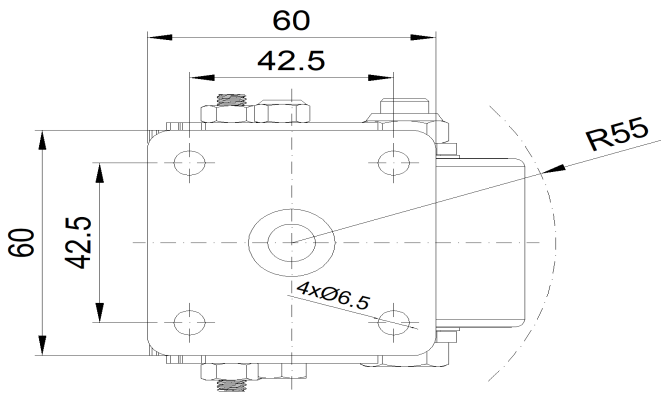
Advantages at a glance

| | |
|----------------------------|-----------|
| Rolling Resistance | ● ● ● ● ● |
| Operating Noise | ● ● ● ● ● |
| Floor Surface Preservation | ● ● ● ● ● |

Dimensions



Mounting



* For any deviation between metric and imperial spec, please refer to the metric spec.