

1165-1 Heavy Duty AMR/AGV Spring-Loading Caster Wheel Series

Anti-static ZQPU Wheel (milling black) Wheel Diameter x Wheel Width 50 x 20 (41.5) mm

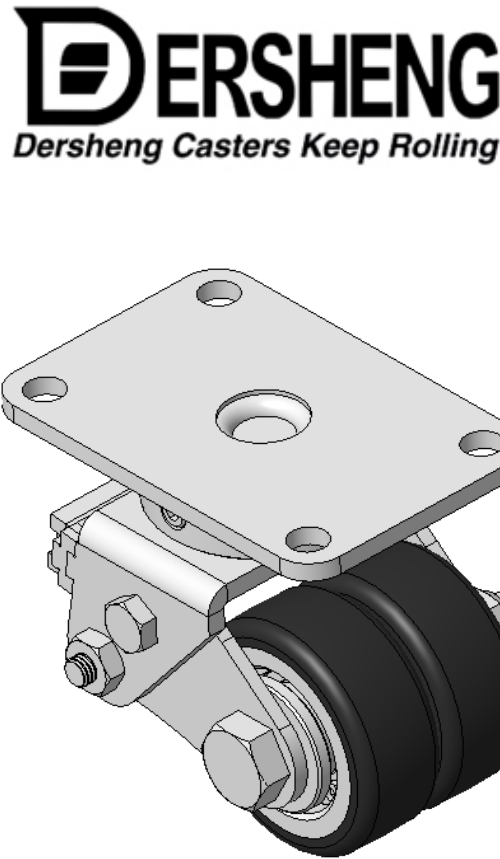
EAN

KS-11650200802723

Spring-loaded Caster with Welded Caster Fork Zine-Plated, Mounting Type - Top Plate, 73 x 44.5" Bolt Hole Spacing Cast Iron Wheel Center with High Quality Polyurethane tread, Anti-Static Black, Bearing—Ball Bearing

Wheel tread: Made of high-quality polyurethane
Wheel Center: iron core/cast iron

Drawings are for reference only and may differ from the product



Picture may differ from original product

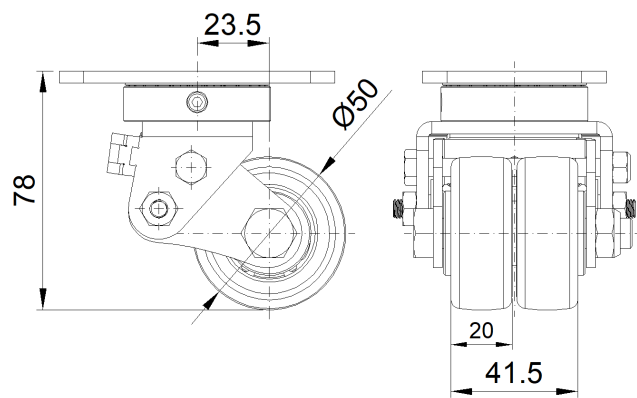
Technical Data

<input checked="" type="radio"/> Imperial <input type="radio"/> Metric	
Wheel Diameter	2 "
Wheel Width	1-11/16 "
Wheel Bearing	Wheels With Ball Bearings
Plate Size	3-9/16 " x 2-7/16 "
Bolt Hole Spacing	2-7/8 " x 1-3/4 "
Plate Hole	3/8 "
Offset	15/16 "
Swivel Interference	4-3/8 "
Overall Height	3-1/8 "
Swivel Radius	2-3/16 "
Hardness Of Tread	85±5° Shore A
Load Capacity (Dynamic)	110lbs
Load Capacity (Static)	165lbs
Temperature	-4°F to +158°F
Fork Type	Swivel Caster
Stainless	N/A
Electrical Conductivity	N/A
Anti-Static	Y 10^6/~10^9/02
Weight	3.2lbs
Standard	ISO22883

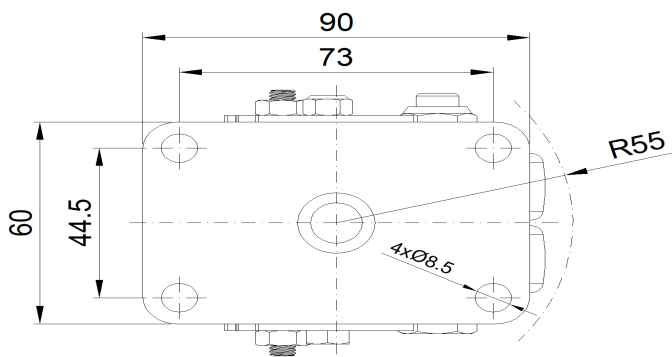
Advantages at a glance

Rolling Resistance	● ● ● ● ●
Operating Noise	● ● ● ● ●
Floor Surface Preservation	● ● ● ● ●

Dimensions



Mounting



* For any deviation between metric and imperial spec, please refer to the metric spec.