



1165-2 Heavy Duty AMR/AGV-2 Caster Series

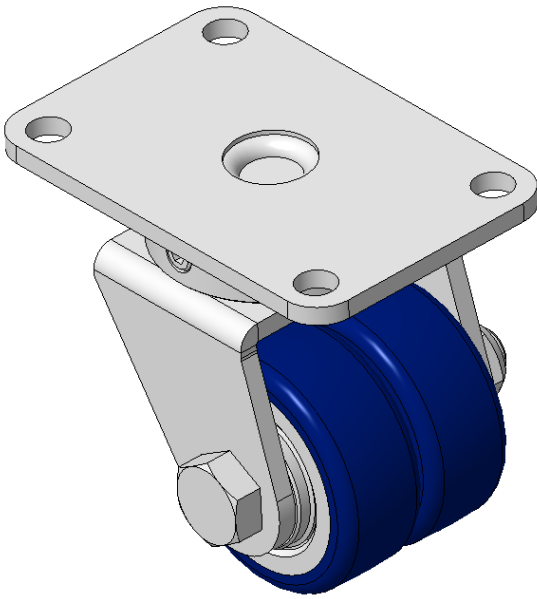
ZQPU (Milled Blue) Wheel Diameter × Wheel Width 50× 20 (41.5) mm

EAN
KS-11650202802043

Swivel Casters with Welded Caster Fork, Zine-Plated finish
Mounting Type - Top Plate, 73x44 Bolt Hole Spacing
Cast Iron Wheel Center, High Quality Polyurethane Wheel Tread, Cast Iron blue Bearings—special Ball Bearings for reduced Rolling Resistance
ZQPU Dual wheel, Ergonomic design designally designed for easier starting and turning

Wheel Tread: Hhigh-Quality Polyurethane
Wheel Center: iron core/cast iron

Drawings are for reference only and may differ from the product



Picture may differ from original product

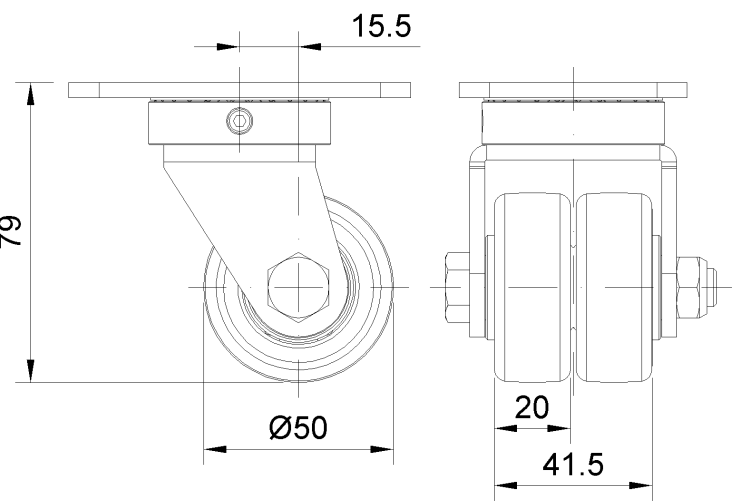
Technical Data

<input checked="" type="radio"/> Metric <input type="radio"/> Imperial	
Wheel Diameter	50mm
Wheel Width	41.5mm
Wheel Bearing	Wheels With Ball Bearings
Plate Size	90 x 60mm
Bolt Hole Spacing	73 x 44mm
Plate Hole	8.5mm
Offset	15.5mm
Swivel Interference	104mm
Overall Height	79mm
Swivel Radius	52mm
Hardness Of Tread	87±5° Shore A
Load Capacity (Dynamic)	70kgs
Load Capacity (Static)	105kgs
Temperature	-20°C to +70°C
Fork Type	Swivel Caster
Stainless	N/A
Electrical Conductivity	N/A
Anti-Static	N/A
Weight	0.81kgs
Standard	ISO22883

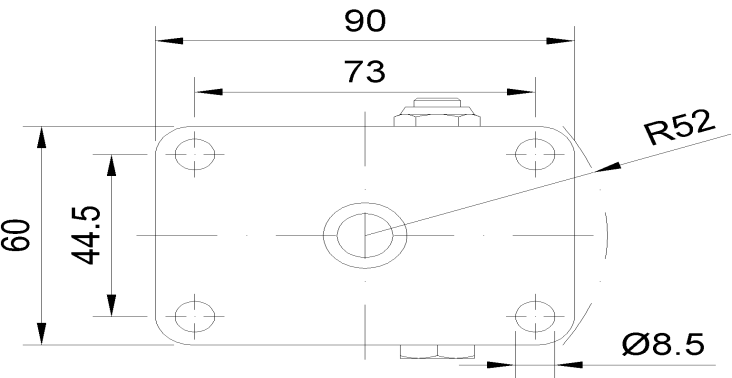
Advantages at a glance

Rolling Resistance	● ● ● ● ●
Operating Noise	● ● ● ● ●
Floor Surface Preservation	● ● ● ● ●

Dimensions



Mounting



* For any deviation between metric and imperial spec, please refer to the metric spec.