

1165-3 AMR/AGV-3 Double Precision Ball Bearing Caster (Medium Duty) Series



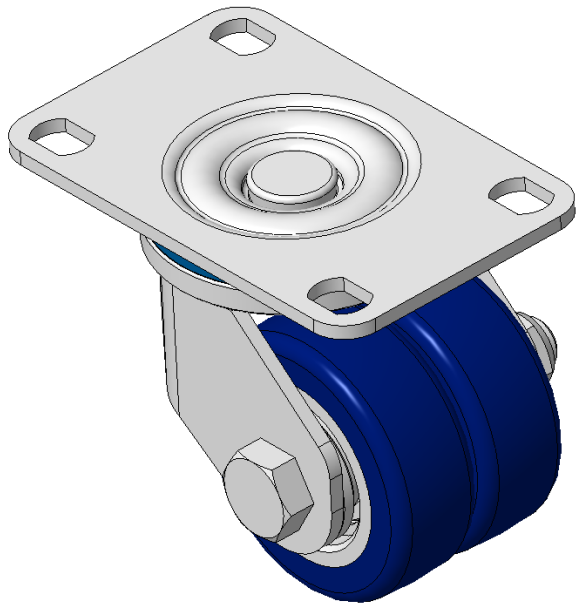
ZQPU (Milled Blue) Wheel Diameter × Wheel Width 50× 20 (41.5) mm

EAN  
KS-11650203802123

Swivel Casters with Welded Caster Fork  
Zine-Plated surface, Mounting Type - Top Plate, 70x37 Bolt Hole Spacing  
Cast Iron Wheel Center, High Quality Polyurethane Wheel Tread, Cast Iron blue Bearings—special Ball Bearings for reduced Rolling Resistance  
ZQPU dual wheels, Ergonomic design designally designed for easier starting and turning

Wheel tread: Made of high-quality polyurethane  
Wheel Center: iron core/cast iron

Drawings are for reference only and may differ from the product



Picture may differ from original product

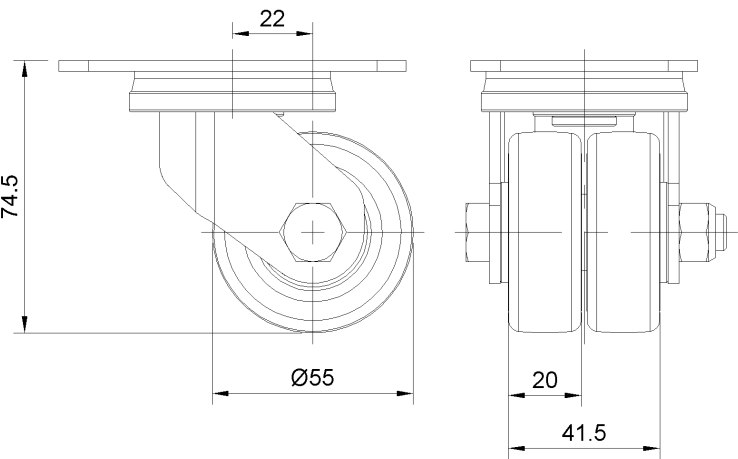
Technical Data

<input checked="" type="radio"/> Metric <input type="radio"/> Imperial	
Wheel Diameter	50mm
Wheel Width	41.5mm
Wheel Bearing	Wheels With Ball Bearings
Plate Size	95 x 62mm
Bolt Hole Spacing	75 x 45mm
Plate Hole	12 x 9mm
Offset	22mm
Swivel Interference	110mm
Overall Height	74.5mm
Swivel Radius	55mm
Hardness Of Tread	87±5° Shore A
Load Capacity (Dynamic)	70kgs
Load Capacity (Static)	105kgs
Temperature	-20°C to +70°C
Fork Type	Swivel Caster
Stainless	N/A
Electrical Conductivity	N/A
Anti-Static	N/A
Weight	0.75kgs
Standard	ISO22883

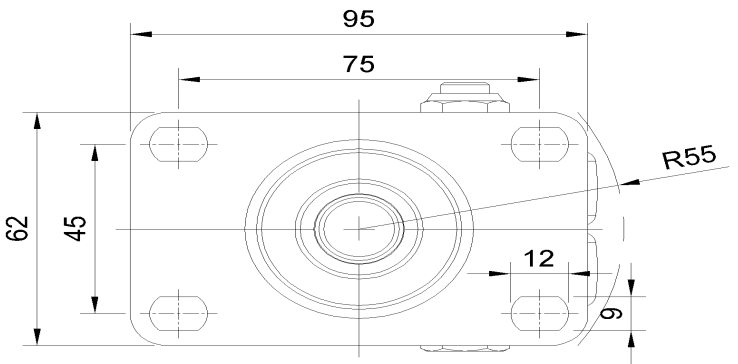
Advantages at a glance

Rolling Resistance	● ● ● ● ●
Operating Noise	● ● ● ● ●
Floor Surface Preservation	● ● ● ● ●

Dimensions



Mounting



\* For any deviation between metric and imperial spec, please refer to the metric spec.