

1165-3 AMR/AGV-3 Double Precision Ball Bearing Caster (Medium Duty) Series



Anti-static ZQPU Wheel (milling black) Wheel Diameter x Wheel Width 50 x 20 (41.5) mm

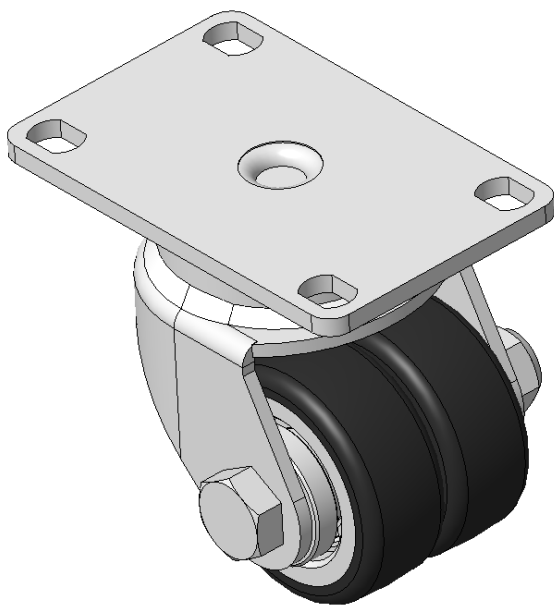
EAN

KS-11650203802713

Swivel Casters with Welded Caster Fork
Electroplated surface, Mounting Type - Top Plate, 75x45 Bolt Hole Spacing
Cast Iron Wheel Center, High Quality Polyurethane Wheel Tread, Cast Iron black Bearings—special Ball Bearings for reduced Rolling Resistance
ZQPU dual wheels, Ergonomic design designally designed for easier starting and turning

Wheel tread: Made of high-quality polyurethane
Wheel Center: iron core/cast iron

Drawings are for reference only and may differ from the product



Picture may differ from original product

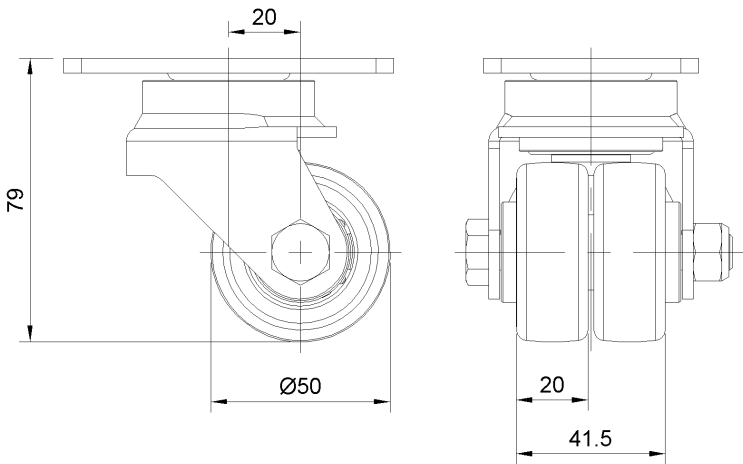
Technical Data

| | |
|---|---------------------------|
| <div><div></div> Metric<div></div> Imperial</div> | |
| Wheel Diameter | 50mm |
| Wheel Width | 41.5mm |
| Wheel Bearing | Wheels With Ball Bearings |
| Plate Size | 92 x 60mm |
| Bolt Hole Spacing | 75 x 45mm |
| Plate Hole | 11.2 x 8.6mm |
| Offset | 20mm |
| Swivel Interference | 108mm |
| Overall Height | 79mm |
| Swivel Radius | 54mm |
| Hardness Of Tread | 77±5° Shore A |
| Load Capacity (Dynamic) | 70kgs |
| Load Capacity (Static) | 105kgs |
| Temperature | -20°C to +70°C |
| Fork Type | Swivel Caster |
| Stainless | N/A |
| Electrical Conductivity | N/A |
| Anti-Static | Y 10^6/~10^9/Ω |
| Weight | 0.87kgs |
| Standard | ISO22883 |

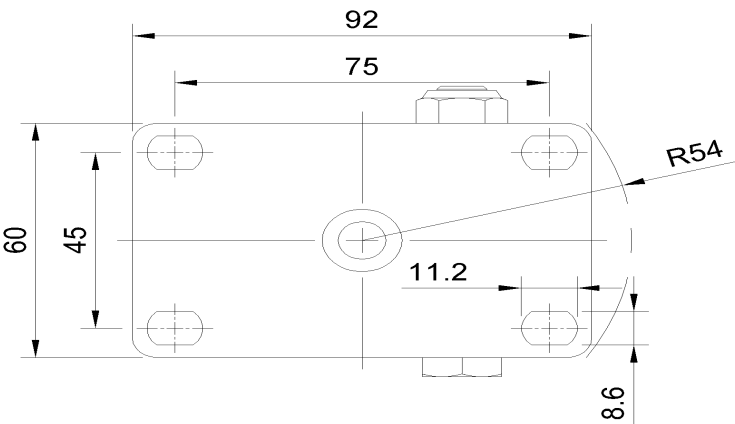
Advantages at a glance

| | |
|----------------------------|-------|
| Rolling Resistance | ●●●●● |
| Operating Noise | ●●●●● |
| Floor Surface Preservation | ●●●●● |

Dimensions



Mounting



* For any deviation between metric and imperial spec, please refer to the metric spec.