

Product Information Sheet

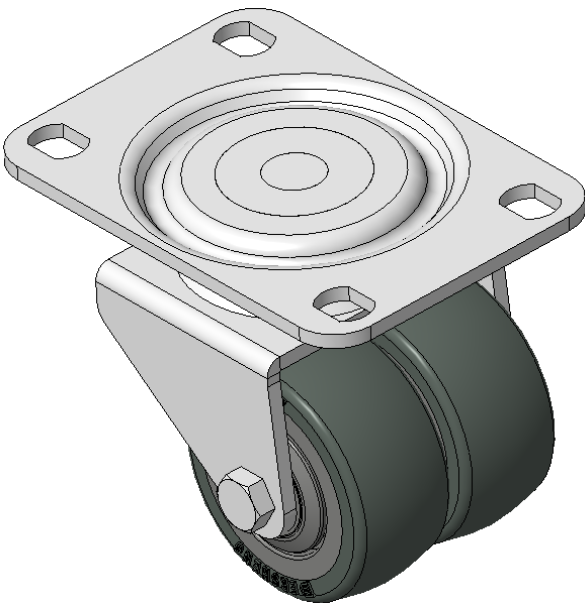
1165-4 1165 Series — AMR/AGV-4 Single Precision Ball Bearing Caster (Medium Duty)Series



Resolute (Pearlescent Dark Gray) Wheel Diameter×Wheel Width 50×22.5mm

EAN

KS-11650204452313



Actual Casters, Welded Caster Fork, electroplated surface
Base plate Mounting Type device, 75x45mm Bolt Hole Spacing
High-Quality Impact-Resistant Polypropylene Wheel Center, High-Quality Reinforced Polypropylene Rubber (TPR) Wheel Tread
Cast Iron dark gray, Bearing—Ball Bearings

Wheel tread: Thermoplastic elastomer (TPR) wheel tread

Wheel Center: Polypropylene wheel core

Drawings are for reference only and may differ from the product

Picture may differ from original product

Technical Data

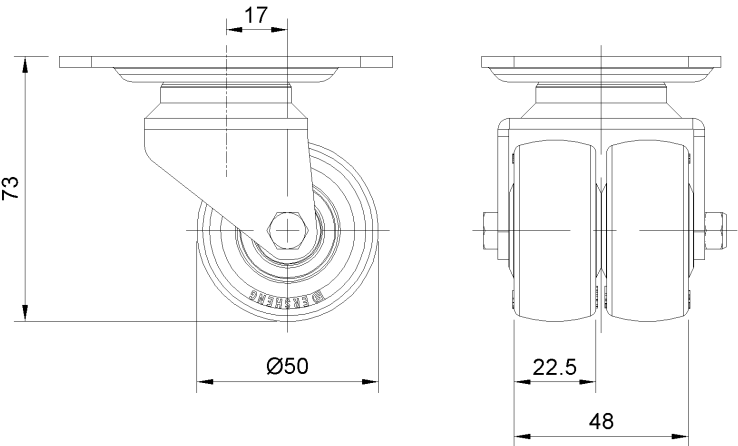
Advantages at a glance

☒ Imperial ☐ Metric

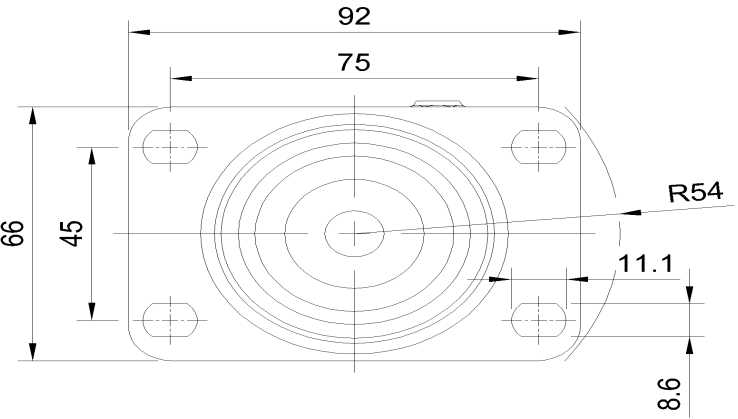
Wheel Diameter	2 "
Wheel Width	22.5mm
Wheel Bearing	Wheels With Ball Bearings
Plate Size	3-11/16 " x 2-5/8 "
Bolt Hole Spacing	3 " x 1-13/16 "
Plate Hole	3/8 " x 3/8 "
Offset	11/16 "
Swivel Interference	4-5/16 "
Overall Height	2-15/16 "
Swivel Radius	2-3/16 "
Hardness Of Tread	72±5° Shore A
Load Capacity (Dynamic)	154lbs
Load Capacity (Static)	231lbs
Temperature	-4°F to +140°F
Fork Type	Swivel Caster
Stainless	N/A
Electrical Conductivity	N/A
Anti-Static	N/A
Weight	3.4lbs
Standard	ISO22883

Rolling Resistance	● ● ● ● ●
Operating Noise	● ● ● ● ●
Floor Surface Preservation	● ● ● ● ●

Dimensions



Mounting



* For any deviation between metric and imperial spec, please refer to the metric spec.