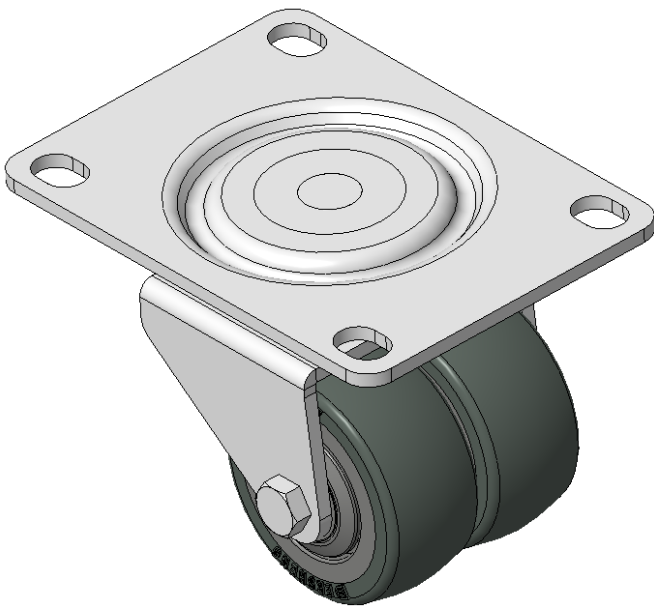


Product Information Sheet

1165-4 1165 Series — AMR/AGV-4 Single Precision Ball Bearing Caster (Medium Duty)Series



Picture may differ from original product

Resolute (Pearlescent Dark Gray) Wheel Diameter×Wheel Width 50×22.5mm

EAN  
KS-11650204452323

Actual Casters, Welded Caster Fork, electroplated surface  
Base plate Mounting Type device, 80x60mm Bolt Hole Spacing  
High-Quality Impact-Resistant Polypropylene Wheel Center, High-Quality Reinforced Polypropylene Rubber (TPR) Wheel Tread  
Cast Iron dark gray, Bearing—Ball Bearings

Wheel tread: Thermoplastic elastomer (TPR) wheel tread  
Wheel Center: Polypropylene wheel core

Drawings are for reference only and may differ from the product

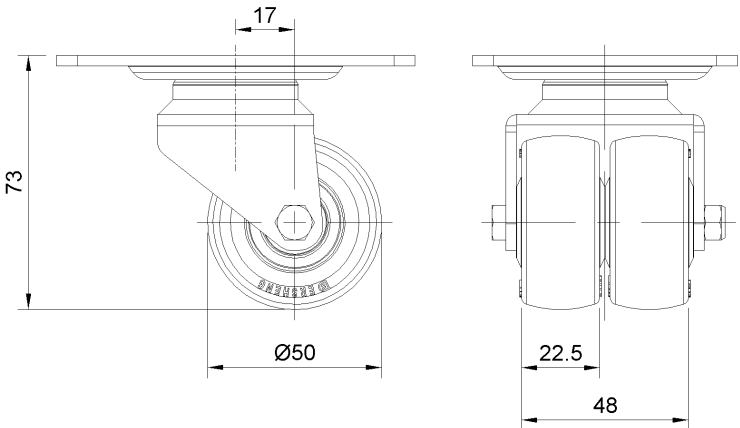
Technical Data

<input checked="" type="radio"/> Metric <input type="radio"/> Imperial	
Wheel Diameter	50mm
Wheel Width	22.5mm
Wheel Bearing	Wheels With Ball Bearings
Plate Size	103 x 76mm
Bolt Hole Spacing	80 x 60mm
Plate Hole	12 x 9mm
Offset	17mm
Swivel Interference	127mm
Overall Height	73mm
Swivel Radius	63.5mm
Hardness Of Tread	72±5° Shore A
Load Capacity (Dynamic)	70kgs
Load Capacity (Static)	105kgs
Temperature	-20°C to +60°C
Fork Type	Swivel Caster
Stainless	N/A
Electrical Conductivity	N/A
Anti-Static	N/A
Weight	1.58kgs
Standard	ISO22883

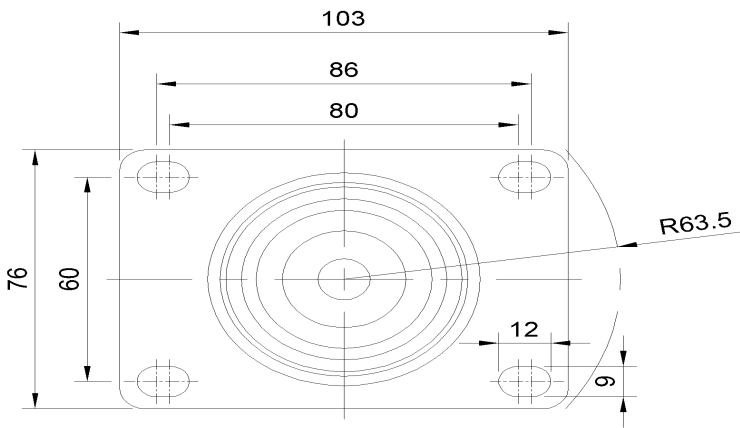
Advantages at a glance

Rolling Resistance	● ● ● ● ●
Operating Noise	● ● ● ● ●
Floor Surface Preservation	● ● ● ● ●

Dimensions



Mounting



\* For any deviation between metric and imperial spec, please refer to the metric spec.