

Product Information Sheet

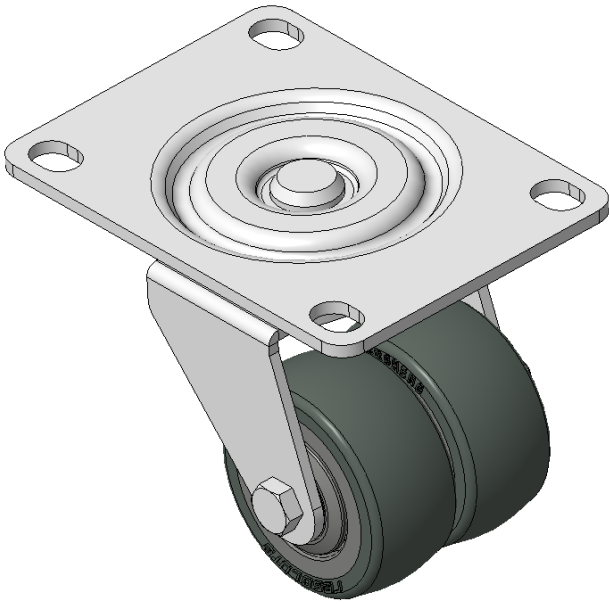
1165-4 1165 Series — AMR/AGV-4 Single Precision Ball Bearing Caster (Medium Duty)Series



PPR Conductive Wheel (Dark Gray/Light Gray) Wheel Diameter×Wheel Width
50×22.5mm

EAN

KS-11650204452363



Picture may differ from original product

Actual Casters, Welded Caster Fork, electroplated surface
Base plate Mounting Type device, 80x60mm Bolt Hole Spacing
High-Quality Impact-Resistant Polypropylene Wheel Center, High-Quality Reinforced Polypropylene Rubber (TPR) Wheel Tread
Cast Iron light gray, Bearing—Ball Bearings

Wheel tread: Thermoplastic elastomer (TPR) wheel tread

Wheel Center: Polypropylene wheel core

Drawings are for reference only and may differ from the product

Technical Data

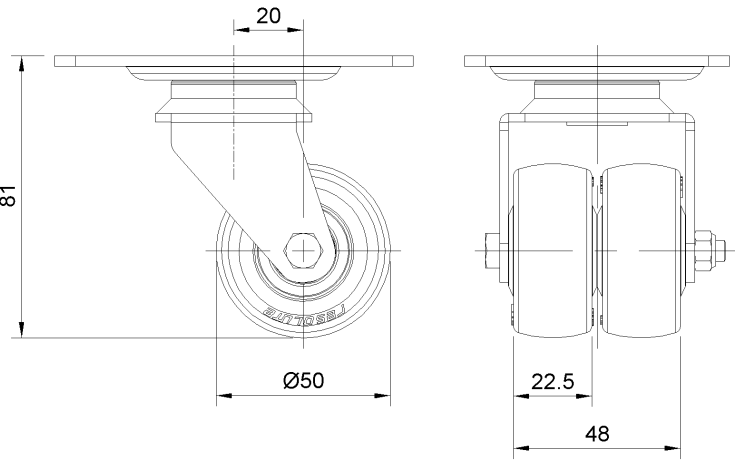
☒ Imperial ☐ Metric

Wheel Diameter	2 "
Wheel Width	22.5mm
Wheel Bearing	Wheels With Ball Bearings
Plate Size	4-1/16 " x 3 "
Bolt Hole Spacing	3-3/16 " x 2-7/16 "
Plate Hole	1/2 " 23/64 "
Offset	13/16 "
Swivel Interference	5 "
Overall Height	3-1/4 "
Swivel Radius	2-1/2 "
Hardness Of Tread	87±5° Shore A
Load Capacity (Dynamic)	88lbs
Load Capacity (Static)	132lbs
Temperature	-4°F to +140°F
Fork Type	Swivel Caster
Stainless	N/A
Electrical Conductivity	Y 10^3/~10^4/Ω
Anti-Static	N/A
Weight	3.5lbs
Standard	ISO22883

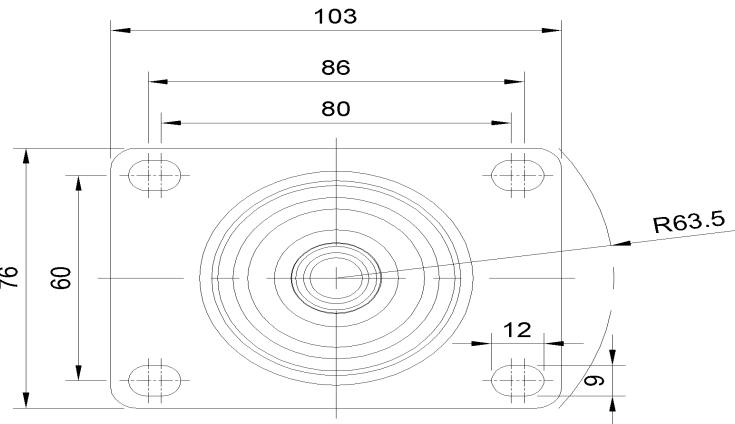
Advantages at a glance

Rolling Resistance	● ● ● ● ○
Operating Noise	● ● ● ● ○
Floor Surface Preservation	● ● ● ● ●

Dimensions



Mounting



* For any deviation between metric and imperial spec, please refer to the metric spec.