

1165-1 Heavy Duty AMR/AGV Spring-Loading Caster Wheel Series



ZQPU (milling blue) Wheel Diameter × Wheel Width 75×20 (41.5) mm

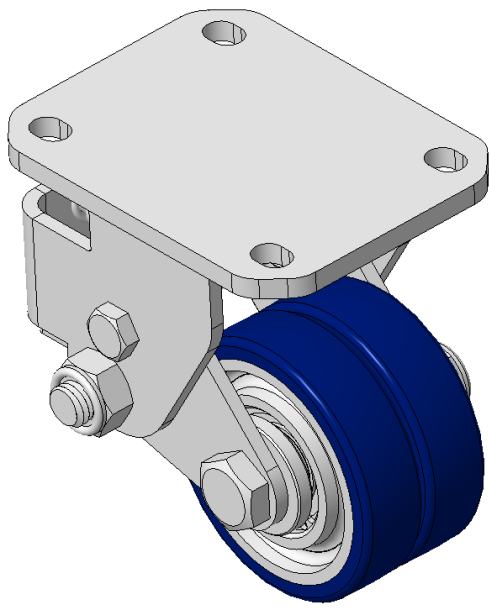
EAN

KS-11650300801013

Rigid Spring-loaded Caster with Welded Caster Fork Zine-Plated, Mounting Type - Top Plate, 80x60 Bolt Hole Spacing Cast Iron Wheel Center with High Quality Polyurethane Wheel Tread, Cast Iron blue Bearings—special Ball Bearings for reduced Rolling Resistance ZQPU Dual wheel, Ergonomic design designally designed for easier starting and turning

Wheel tread: Made of high-quality polyurethane
Wheel Center: iron core/cast iron

Drawings are for reference only and may differ from the product



Picture may differ from original product

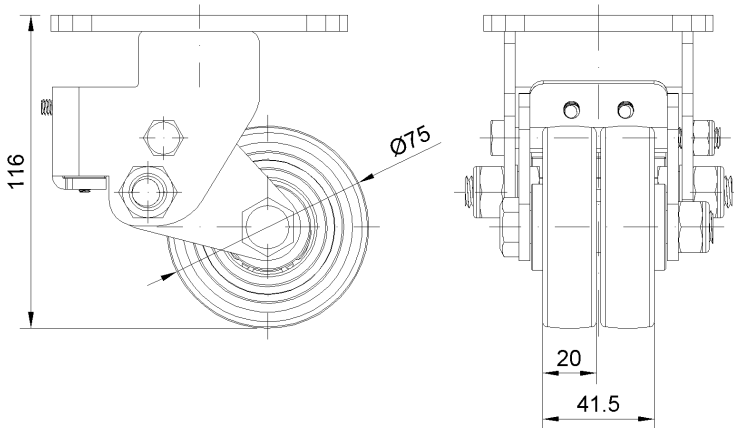
Technical Data

<input checked="" type="radio"/> Metric <input type="radio"/> Imperial	
Wheel Diameter	75mm
Wheel Width	41.5mm
Wheel Bearing	Wheels With Ball Bearings
Plate Size	110 x 85mm
Bolt Hole Spacing	80 x 60mm
Plate Hole	12 x 9mm
Overall Height	116mm
Hardness Of Tread	87±5° Shore A
Load Capacity (Dynamic)	300kgs
Load Capacity (Static)	450kgs
Temperature	-20°C to +70°C
Fork Type	Rigid Caster
Stainless	N/A
Electrical Conductivity	N/A
Anti-Static	N/A
Weight	1.88kgs
Standard	ISO22883

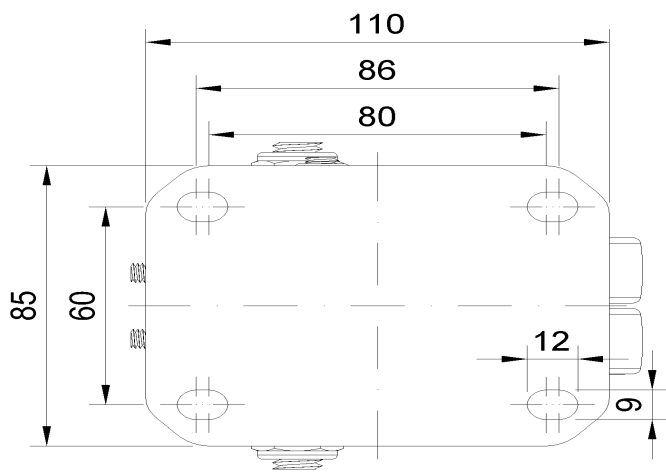
Advantages at a glance

Rolling Resistance	● ● ● ● ●
Operating Noise	● ● ● ● ●
Floor Surface Preservation	● ● ● ● ●

Dimensions



Mounting



* For any deviation between metric and imperial spec, please refer to the metric spec.