

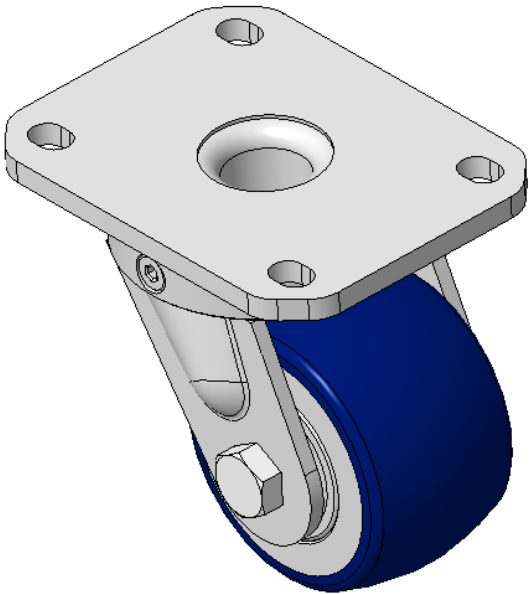


1165-2 Heavy Duty AMR/AGV-2 Caster Series

QPU (blue round) Wheel Diameter x Wheel Width 75 x 45mm

EAN

KS-11650302532043



Picture may differ from original product

Swivel Caster E-Coat Finish, Mounting Type - Top Plate, 80x60 Bolt Hole Spacing
Aluminum core, High Quality Polyurethane tread Blue finish, Bearing—Ball Bearing

Wheel tread: Made of high-quality polyurethane
Wheel Center: iron core/cast iron

Drawings are for reference only and may differ from the product

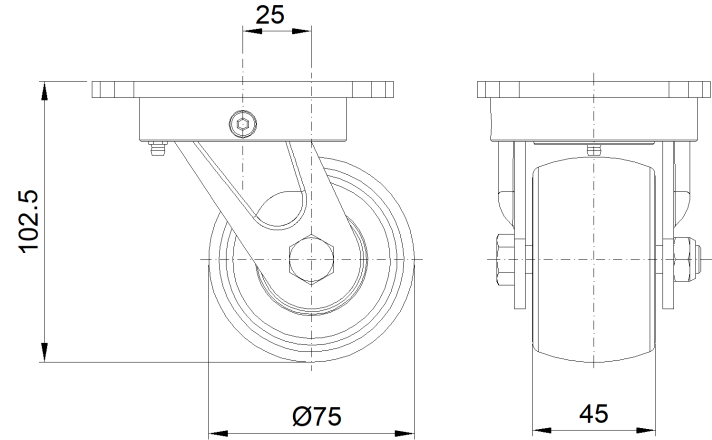
Technical Data

<input checked="" type="radio"/> Metric <input type="radio"/> Imperial	
Wheel Diameter	75mm
Wheel Width	45mm
Wheel Bearing	Wheels With Ball Bearings
Plate Size	110 x 85mm
Bolt Hole Spacing	80 x 60mm
Plate Hole	12 x 9mm
Offset	25mm
Swivel Interference	145mm
Overall Height	102.5mm
Swivel Radius	72.5mm
Hardness Of Tread	87±5° Shore A
Load Capacity (Dynamic)	250kgs
Load Capacity (Static)	375kgs
Temperature	-20°C to +70°C
Fork Type	Swivel Caster
Stainless	N/A
Electrical Conductivity	N/A
Anti-Static	N/A
Weight	1.33kgs
Standard	ISO22883

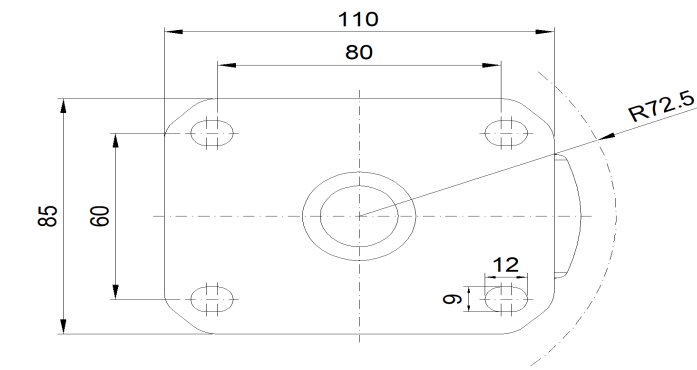
Advantages at a glance

Rolling Resistance	● ● ● ● ●
Operating Noise	● ● ● ● ●
Floor Surface Preservation	● ● ● ● ●

Dimensions



Mounting



* For any deviation between metric and imperial spec, please refer to the metric spec.