

1165-3 AMR/AGV-3 Double Precision Ball Bearing Caster (Medium Duty) Series



AQPU (Grey round) Wheel Diameter × Wheel Width 75 x 30mm

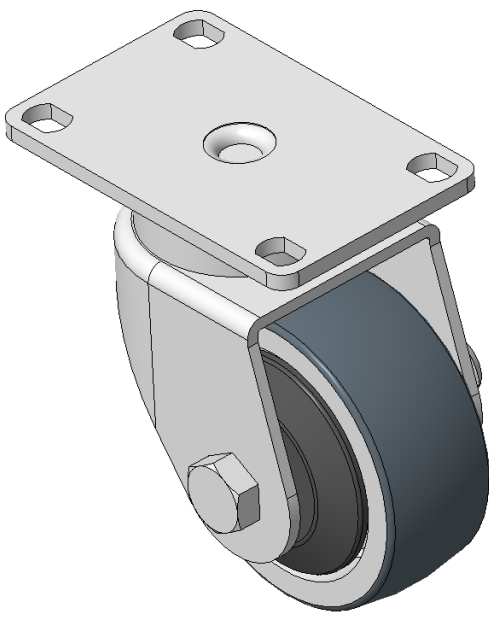
EAN

KS-11650303602033

Swivel Caster with Welded Caster Fork and electroplated finish
Mounting Type - Top Plate, 75x45 Bolt Hole Spacing
Cast Iron core with High Quality Polyurethane Wheel Tread, Cast Iron gray Bearings—Ball Bearings with special Anti-thread wheel cover

Wheel tread: Made of high-quality polyurethane
Wheel Center: iron core/cast iron

Drawings are for reference only and may differ from the product



Picture may differ from original product

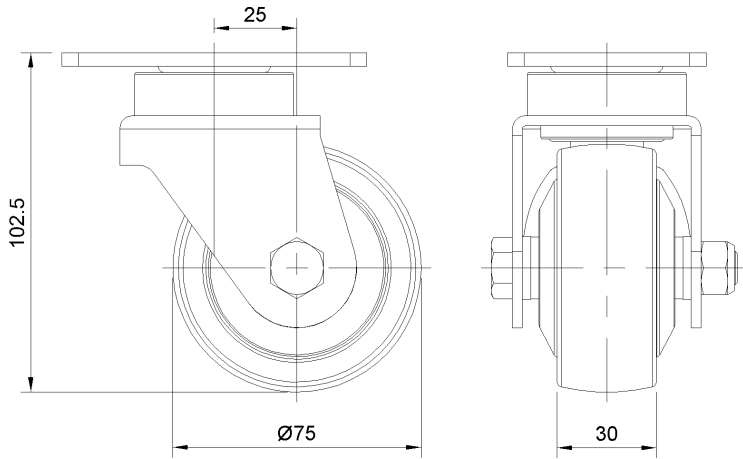
Technical Data

| | |
|--|---------------------------|
| <input checked="" type="radio"/> Metric <input type="radio"/> Imperial | |
| Wheel Diameter | 75mm |
| Wheel Width | 30mm |
| Wheel Bearing | Wheels With Ball Bearings |
| Plate Size | 92 x 60mm |
| Bolt Hole Spacing | 75 x 45mm |
| Plate Hole | 11.1 x 8.6mm |
| Offset | 25mm |
| Swivel Interference | 130mm |
| Overall Height | 102.5mm |
| Swivel Radius | 65mm |
| Hardness Of Tread | 92±5° Shore A |
| Load Capacity (Dynamic) | 150kgs |
| Load Capacity (Static) | 225kgs |
| Temperature | -20°C to +70°C |
| Fork Type | Swivel Caster |
| Stainless | N/A |
| Electrical Conductivity | N/A |
| Anti-Static | N/A |
| Weight | 1.21kgs |
| Standard | ISO22883 |

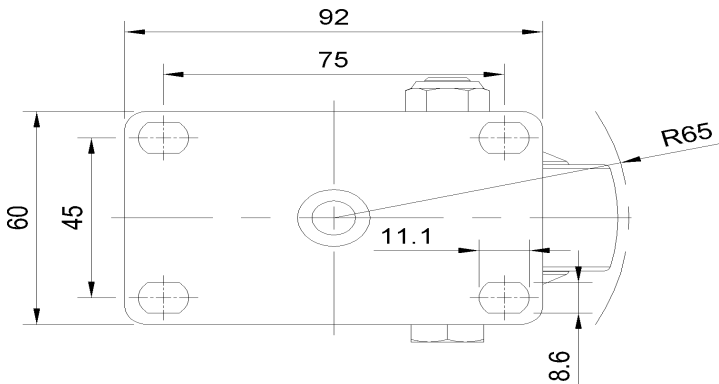
Advantages at a glance

| | |
|----------------------------|-----------|
| Rolling Resistance | ● ● ● ● ● |
| Operating Noise | ● ● ● ● ● |
| Floor Surface Preservation | ● ● ● ● ● |

Dimensions



Mounting



* For any deviation between metric and imperial spec, please refer to the metric spec.