



1165-4 1165 Series — AMR/AGV-4 Single Precision Ball Bearing Caster (Medium Duty)Series

PPR (dark light gray) Wheel Diameter x Wheel Width 75 x 31mm

EAN

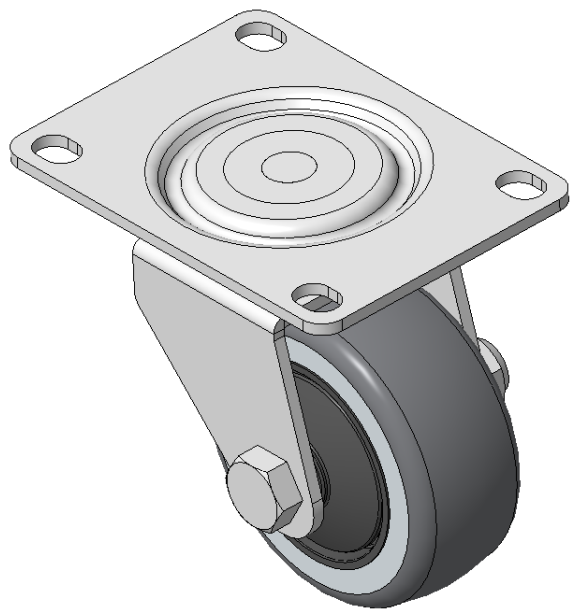
KS-11650304172023

Swivel Caster, Welded Caster Fork, electroplated finish
Mounting Type - Top Plate, 80x60 Bolt Hole Spacing
High-Quality Impact-Resistant Polypropylene Wheel Center, High-Quality Reinforced
Polypropylene Rubber (TPR) Wheel Tread
Cast Iron light gray, Bearing—Ball Bearings

Wheel surface: Thermoplastic elastomer (TPR) wheel surface

Wheel Center: Polypropylene wheel core

Drawings are for reference only and may differ from the product



Picture may differ from original product

Technical Data

☒ Imperial ☐ Metric

Wheel Diameter 3"

Wheel Width 1-1/4 "

Wheel Bearing Wheels With Ball Bearings

Plate Size 4-1/16" x 3"

Bolt Hole Spacing 3-3/16" x 2-7/16"

Plate Hole 1/2" x 23/64"

Offset 13/16 "

Swivel Interference 5"

Overall Height 3-15/16 "

Swivel Radius 2-1/2 "

Hardness Of Tread 87±5° Shore A

Load Capacity (Dynamic)	132lbs
-------------------------	--------

Load Capacity (Static)	198lbs
------------------------	--------

Temperature -4°F to +140°F

Fork Type Swivel Caster

Stainless	N/A
-----------	-----

Electrical Conductivity $\gamma \sim 10^3 \sim 10^4 / \Omega$

Anti-Static	N/A
-------------	-----

Weight 3.0lbs

Standard ISO22883

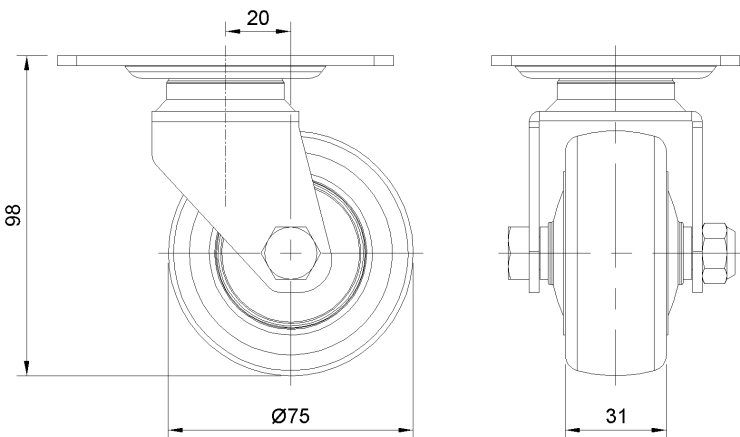
Advantages at a glance

Rolling Resistance ● ● ● ● ○

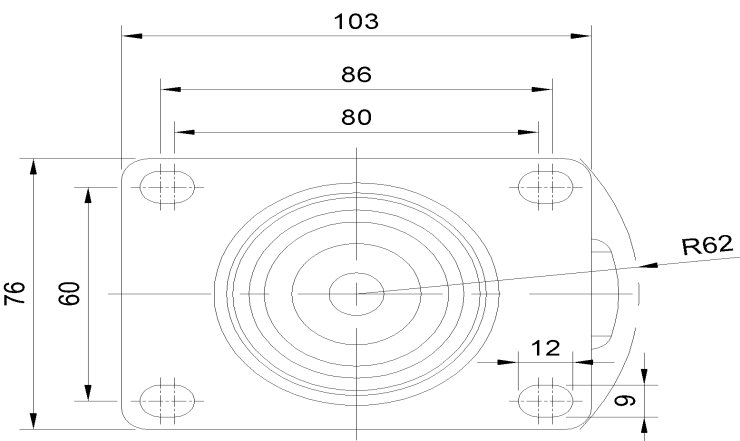
Operating Noise ● ● ● ● ○

Floor Surface Preservation ● ● ● ● ●

Dimensions



Mounting



* For any deviation between metric and imperial spec, please refer to the metric spec.