

1165-5 AMR/AGV- 5 Pressed Steel Caster - Single Wheel Series (Medium/Light Duty)



Anti-static HPU (black round) Wheel Diameter x Wheel Width 75 x 30 mm

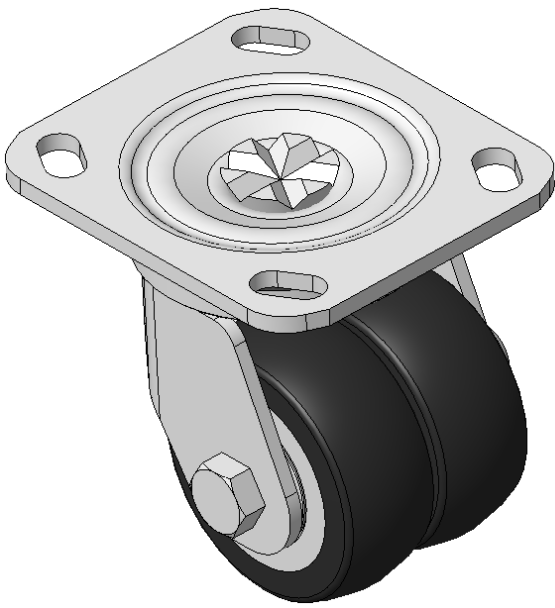
EAN

KS-11650305752153

Swivel castor, Welded Caster Fork Surface spray zinc, Top Plate Mounting Type, Hole spacing 85 x 70 Wheel core made of cast iron, High Quality Polyurethane Wheel Tread, Cast Iron black Bearing - Ball Bearing, Anti-Static

Wheel tread: Made of high quality polyurethane
Wheel Center: iron core/cast iron

Drawings are for reference only and may differ from the product



Picture may differ from original product

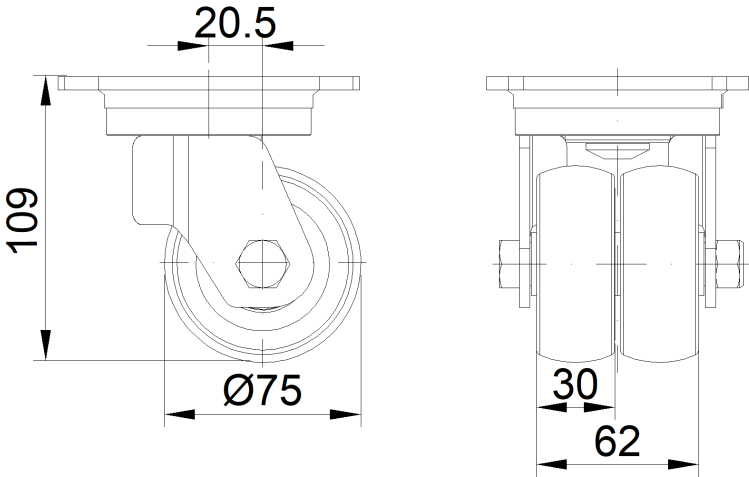
Technical Data

<input checked="" type="radio"/> Imperial <input type="radio"/> Metric	
Wheel Diameter	3 "
Wheel Width	2-1/2 "
Wheel Bearing	Wheels With Ball Bearings
Plate Size	4-3/8 " x 3-3/16 "
Bolt Hole Spacing	3-3/8 " x 2-3/4 "
Plate Hole	13/16 " x 3/8 "
Offset	13/16 "
Swivel Interference	6 "
Overall Height	4-1/4 "
Swivel Radius	3 "
Hardness Of Tread	92±5° Shore A
Load Capacity (Dynamic)	661lbs
Load Capacity (Static)	992lbs
Temperature	-4°F to +158°F
Fork Type	Swivel Caster
Stainless	N/A
Electrical Conductivity	N/A
Anti-Static	Y 10^6/~10^9/02
Weight	4.6lbs
Standard	ISO22883

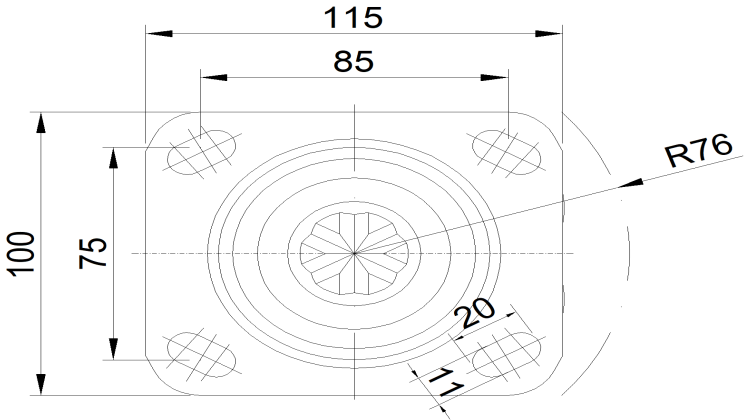
Advantages at a glance

Rolling Resistance	● ● ● ● ●
Operating Noise	● ● ● ● ○
Floor Surface Preservation	● ● ● ● ●

Dimensions



Mounting



* For any deviation between metric and imperial spec, please refer to the metric spec.