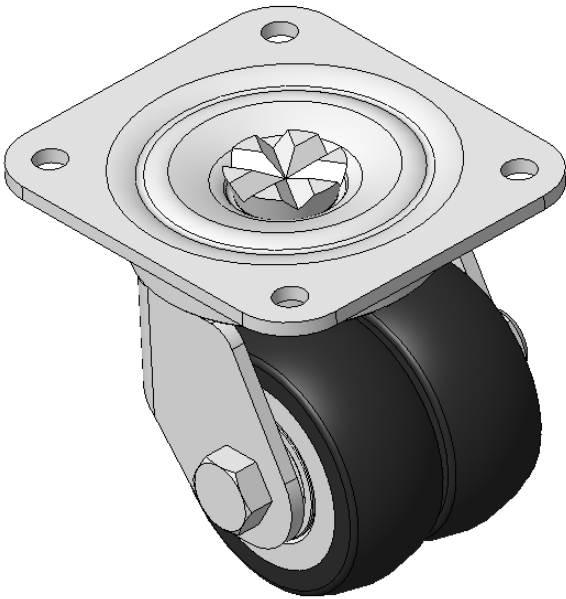


Product Information Sheet

1165-5 AMR/AGV- 5 Pressed Steel Caster - Single Wheel Series (Medium/Light Duty)



Picture may differ from original product

Anti-static HPU (black round) Wheel Diameter x Wheel Width 72 x 30 mm

EAN  
KS-11650305752233

Swivel Casters, Riveted and Stamping Top Plate—75 x 45 mm (3" x 1-3/4") Bolt Hole Spacing  
Electroplated surface, Mounting Type - Top Plate device, 85x75mm Bolt Hole Spacing  
Aluminum wheel center, High Quality Polyurethane Wheel Tread  
Cast Iron black, Bearing—Ball Bearings

Wheel Tread: Hhigh-Quality Polyurethane  
Wheel Center: Iron core/cast iron

Drawings are for reference only and may differ from the product

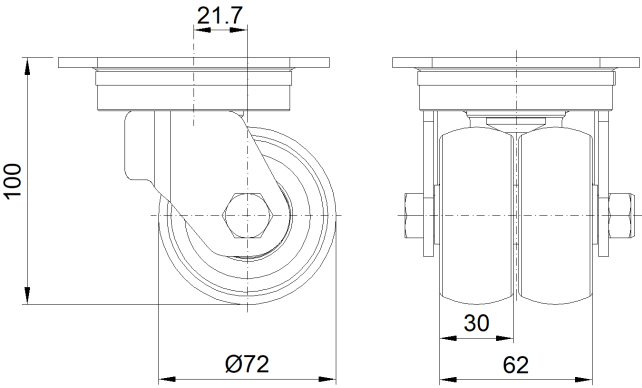
Technical Data

<input checked="" type="radio"/> Metric <input type="radio"/> Imperial	
Wheel Diameter	72mm
Wheel Width	62mm
Wheel Bearing	Wheels With Ball Bearings
Plate Size	110 x 100mm
Bolt Hole Spacing	85 x 75mm
Plate Hole	9mm
Offset	21.7mm
Swivel Interference	140mm
Overall Height	100mm
Swivel Radius	70mm
Hardness Of Tread	92±5° Shore A
Load Capacity (Dynamic)	300kgs
Load Capacity (Static)	450kgs
Temperature	-20°C to +70°C
Fork Type	Swivel Caster
Stainless	N/A
Electrical Conductivity	N/A
Anti-Static	Y 10^6/~10^9/02
Weight	2.31kgs
Standard	ISO22883

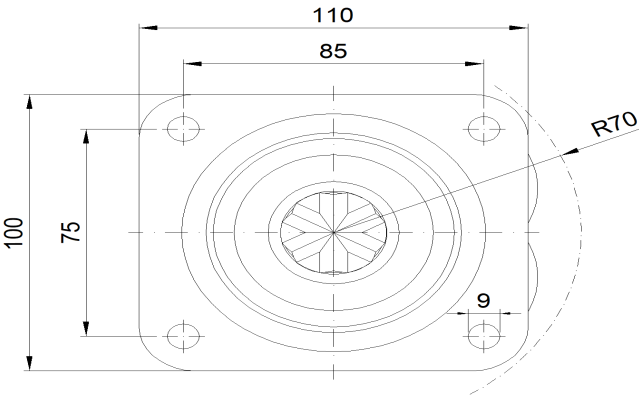
Advantages at a glance

Rolling Resistance	● ● ● ● ●
Operating Noise	● ● ● ● ○
Floor Surface Preservation	● ● ● ● ●

Dimensions



Mounting



\* For any deviation between metric and imperial spec, please refer to the metric spec.