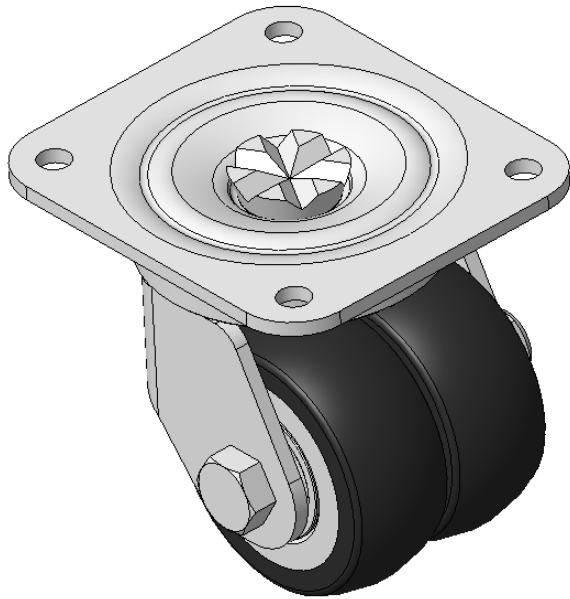


Product Information Sheet

1165-5 AMR/AGV- 5 Pressed Steel Caster - Single Wheel Series (Medium/Light Duty)



Picture may differ from original product

Anti-static HPU (black round) Wheel Diameter x Wheel Width 72 x 30 mm

EAN
KS-11650305752233

Swivel Casters, Riveted and Stamping Top Plate—75 x 45 mm (3" x 1-3/4") Bolt Hole Spacing
Electroplated surface, Mounting Type - Top Plate device, 85x75mm Bolt Hole Spacing
Aluminum wheel center, High Quality Polyurethane Wheel Tread
Cast Iron black, Bearing—Ball Bearings

Wheel Tread: Hhigh-Quality Polyurethane
Wheel Center: Iron core/cast iron

Drawings are for reference only and may differ from the product

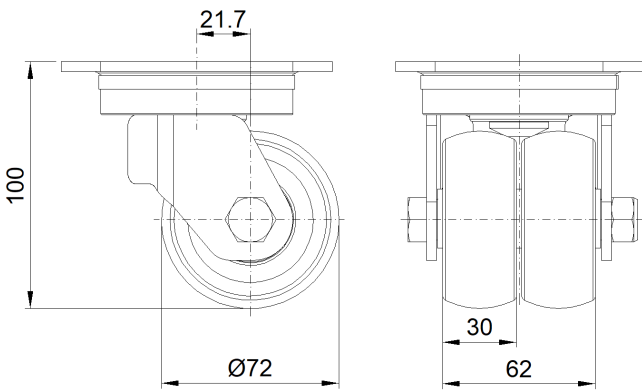
Technical Data

<input checked="" type="radio"/> Imperial <input type="radio"/> Metric	
Wheel Diameter	2-7/8 "
Wheel Width	2-1/2 "
Wheel Bearing	Wheels With Ball Bearings
Plate Size	4-3/8 " x 4 "
Bolt Hole Spacing	
Plate Hole	23/64 "
Offset	7/8 "
Swivel Interference	5-9/16 "
Overall Height	4 "
Swivel Radius	2-13/16 "
Hardness Of Tread	92±5° Shore A
Load Capacity (Dynamic)	661lbs
Load Capacity (Static)	992lbs
Temperature	-4°F to +158°F
Fork Type	Swivel Caster
Stainless	N/A
Electrical Conductivity	N/A
Anti-Static	Y 10^6/~10^9/02
Weight	5.1lbs
Standard	ISO22883

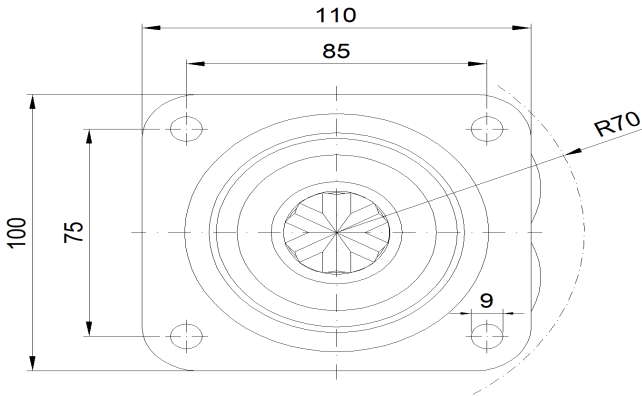
Advantages at a glance

Rolling Resistance	● ● ● ● ●
Operating Noise	● ● ● ● ○
Floor Surface Preservation	● ● ● ● ●

Dimensions



Mounting



* For any deviation between metric and imperial spec, please refer to the metric spec.