

1165-5 AMR/AGV- 5 Pressed Steel Caster - Single Wheel Series (Medium/Light Duty)



HPU (orange round) Wheel Diameter x Wheel Width 75 x 30 mm

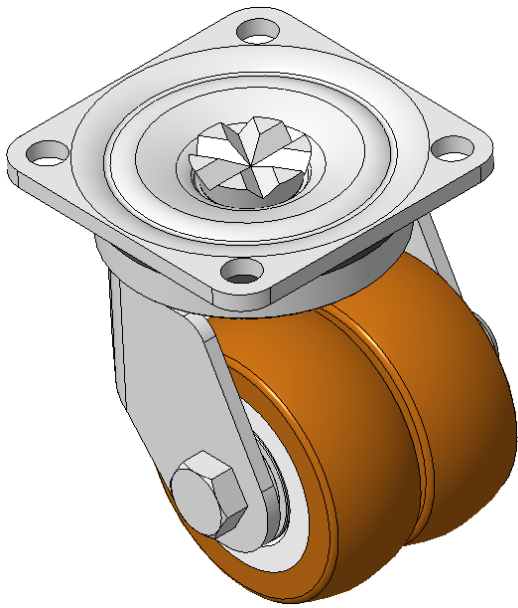
EAN

KS-11650305752713

Swivel Caster, Welded Caster Fork Surface spray zinc, Mounting Type - Top Plate, Hole spacing 70 x 70 Cast Iron Wheel Center, High Quality Polyurethane Wheel Tread, Cast Iron orange Bearing - Ball Bearing

Wheel tread: Made of high quality polyurethane  
Wheel Center: iron core/cast iron

Drawings are for reference only and may differ from the product



Picture may differ from original product

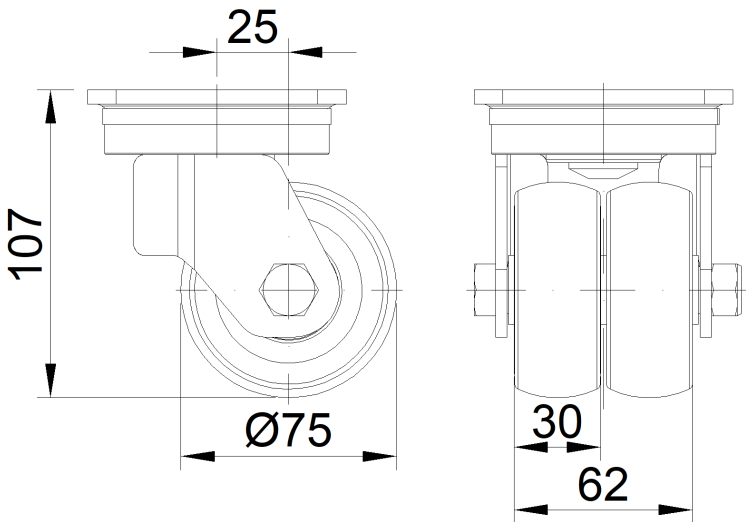
Technical Data

<input checked="" type="radio"/> Metric <input type="radio"/> Imperial	
Wheel Diameter	75mm
Wheel Width	62mm
Wheel Bearing	Wheels With Ball Bearings
Plate Size	90 x 90mm
Bolt Hole Spacing	70 x 70mm
Plate Hole	10.5mm
Offset	25mm
Swivel Interference	152mm
Overall Height	107mm
Swivel Radius	76mm
Hardness Of Tread	92±5° Shore A
Load Capacity (Dynamic)	300kgs
Load Capacity (Static)	450kgs
Temperature	-20°C to +70°C
Fork Type	Swivel Caster
Stainless	N/A
Electrical Conductivity	N/A
Anti-Static	N/A
Weight	2.08kgs
Standard	ISO22883

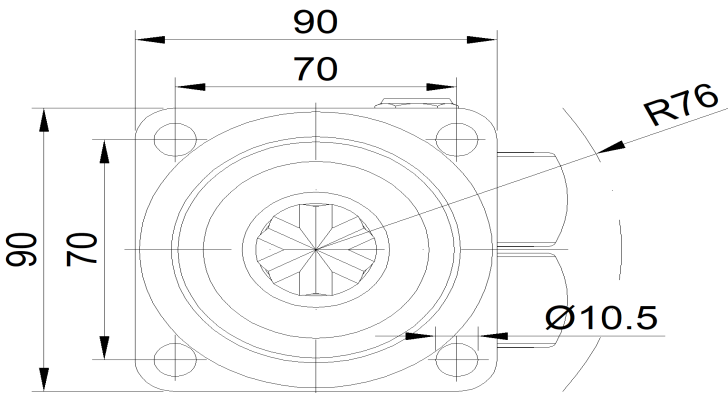
Advantages at a glance

Rolling Resistance	● ● ● ● ●
Operating Noise	● ● ● ● ○
Floor Surface Preservation	● ● ● ● ●

Dimensions



Mounting



\* For any deviation between metric and imperial spec, please refer to the metric spec.