

1165-5 AMR/AGV- 5 Pressed Steel Caster - Single Wheel Series (Medium/Light Duty)



ZQPU (milling blue) Wheel Diameter × Wheel Width 75×20 (41.5) mm

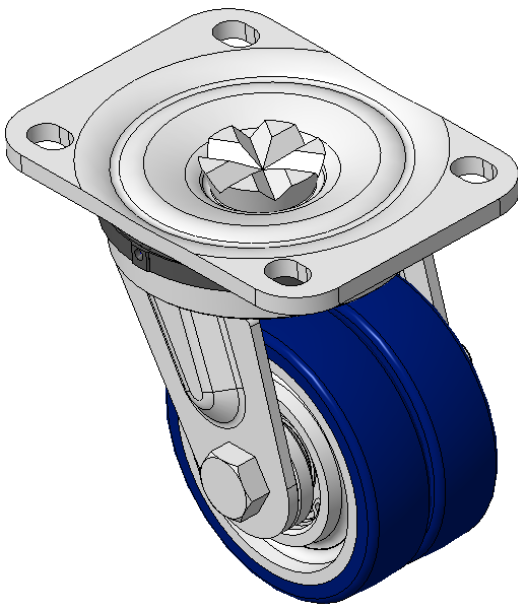
EAN

KS-11650305802013

Swivel Casters, Welded Caster Fork Extended control lever surface, Top Plate Mounting Type, Hole spacing 80 x 60 Cast Iron Wheel Center, High Quality Polyurethane Wheel Tread, Cast Iron blue-brown Bearing—special Ball Bearings to reduce Rolling Resistance ZQPU double wheels, Ergonomic design, easier to start and turn

Wheel tread: Made of high quality polyurethane
Wheel Center: iron core/cast iron

Drawings are for reference only and may differ from the product



Picture may differ from original product

Technical Data

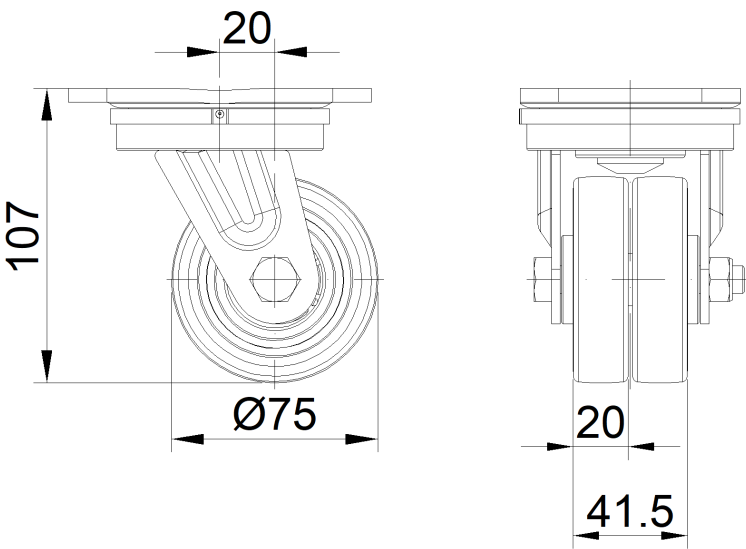
☒ Metric ☐ Imperial

Wheel Diameter	75mm
Wheel Width	41.5mm
Wheel Bearing	Wheels With Ball Bearings
Plate Size	110 x 80mm
Bolt Hole Spacing	80 x 60mm
Plate Hole	12 x 9mm
Offset	20mm
Swivel Interference	152mm
Overall Height	107mm
Swivel Radius	76mm
Hardness Of Tread	92±5° Shore A
Load Capacity (Dynamic)	300kgs
Load Capacity (Static)	450kgs
Temperature	-20°C to +70°C
Fork Type	Swivel Caster
Stainless	N/A
Electrical Conductivity	N/A
Anti-Static	N/A
Weight	1.61kgs
Standard	ISO22883

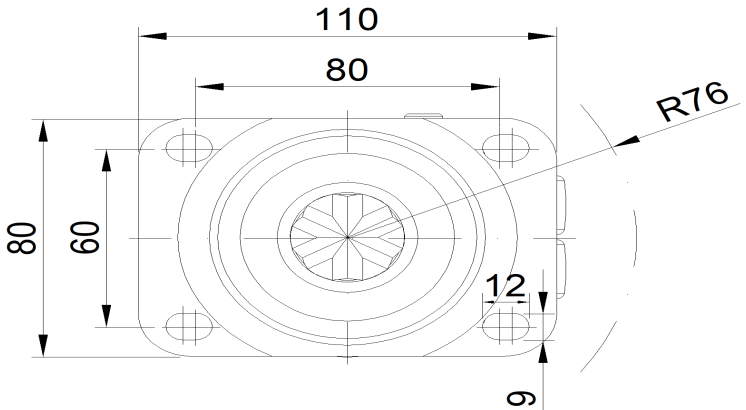
Advantages at a glance

Rolling Resistance	• • • • •
Operating Noise	• • • • •
Floor Surface Preservation	• • • • •

Dimensions



Mounting



* For any deviation between metric and imperial spec, please refer to the metric spec.