

1165-5 AMR/AGV- 5 Pressed Steel Caster - Single Wheel Series (Medium/Light Duty)



Anti-static ZQPU (milling black) Wheel Diameter x Wheel Width 75 x 20 (41.5) mm

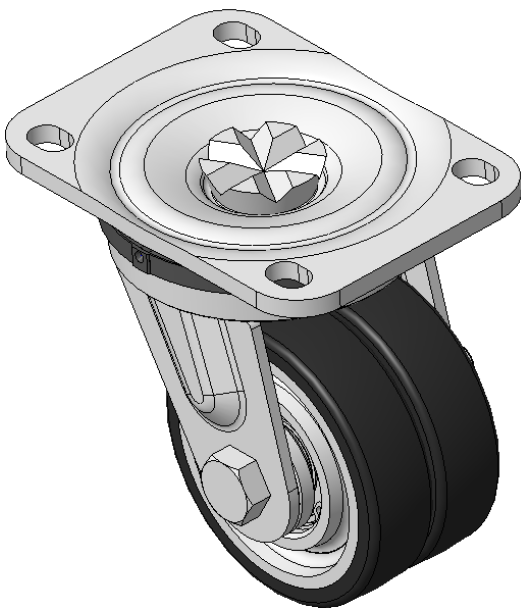
EAN

KS-11650305802713

Swivel Caster, Welded Caster Fork Extended control lever surface, Top Plate Mounting Type, Hole spacing 80 x 60 Cast Iron Wheel Center, High Quality Polyurethane Wheel Tread, Cast Iron black Bearing—special Ball Bearings to reduce Rolling Resistance ZQPU double wheels, Ergonomic design, easier to start and turn

Wheel tread: Made of high quality polyurethane
Wheel Center: iron core/cast iron

Drawings are for reference only and may differ from the product



Picture may differ from original product

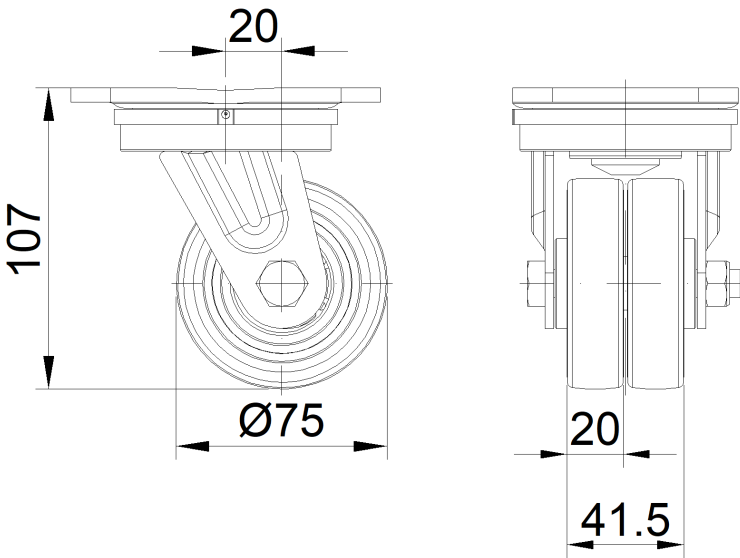
Technical Data

| | |
|------------------------------------------------------------------------|---------------------------|
| <input checked="" type="radio"/> Imperial <input type="radio"/> Metric | |
| Wheel Diameter | 3 " |
| Wheel Width | 1-11/16 " |
| Wheel Bearing | Wheels With Ball Bearings |
| Plate Size | 4-3/8 " x 3-3/16 " |
| Bolt Hole Spacing | 3-3/16 " x 2-7/16 " |
| Plate Hole | 1/2 " x 23/64 " |
| Offset | 13/16 " |
| Swivel Interference | 6 " |
| Overall Height | 4-1/4 " |
| Swivel Radius | 3 " |
| Hardness Of Tread | 85±5° Shore A |
| Load Capacity (Dynamic) | 551lbs |
| Load Capacity (Static) | 827lbs |
| Temperature | -4°F to +158°F |
| Fork Type | Swivel Caster |
| Stainless | N/A |
| Electrical Conductivity | N/A |
| Anti-Static | Y 10^6/~10^9/02 |
| Weight | 3.5lbs |
| Standard | ISO22883 |

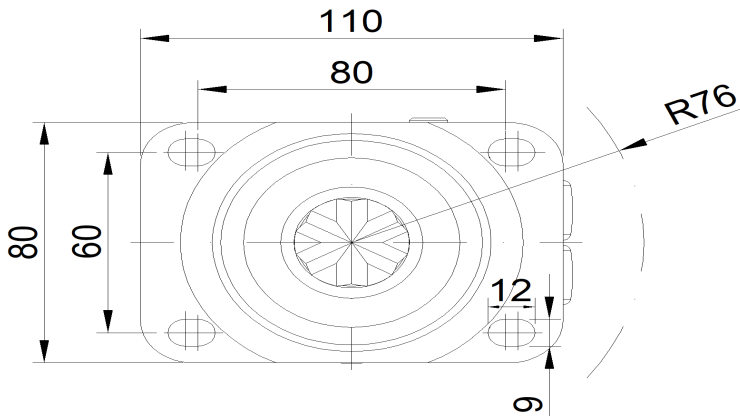
Advantages at a glance

| | |
|----------------------------|-----------|
| Rolling Resistance | • • • • • |
| Operating Noise | • • • • • |
| Floor Surface Preservation | • • • • • |

Dimensions



Mounting



* For any deviation between metric and imperial spec, please refer to the metric spec.