

1165-1 Heavy Duty AMR/AGV Spring-Loading Caster Wheel Series



Anti-static ZQPU (milling black) Wheel Diameter x Wheel Width 100 x 22 (46.5) mm

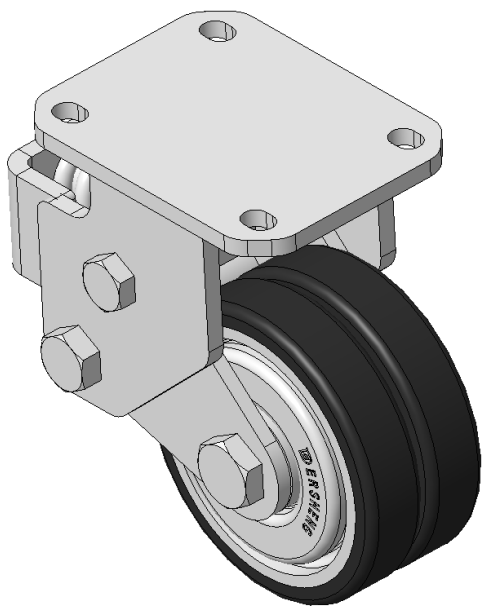
EAN

KS-11650400801723

Rigid Spring-loaded Caster with Welded Caster Fork Electroplated finish, Mounting Type - Top Plate, 80x60 Bolt Hole Spacing Cast Iron Wheel Center with High Quality Polyurethane Wheel Tread, Cast Iron black Bearings—special Ball Bearings for reduced Rolling Resistance ZQPU Dual wheel, Ergonomic design designally designed for easier starting and turning

Wheel tread: Made of high-quality polyurethane  
Wheel Center: iron core/cast iron

Drawings are for reference only and may differ from the product



Picture may differ from original product

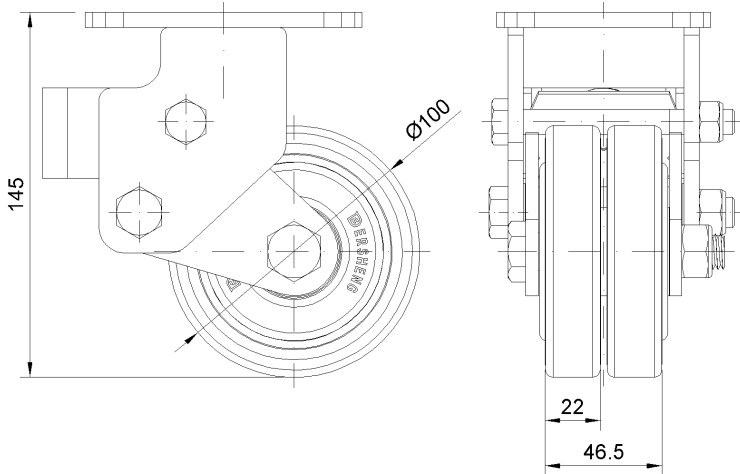
Technical Data

<input checked="" type="radio"/> Metric <input type="radio"/> Imperial	
Wheel Diameter	100mm
Wheel Width	46.5mm
Wheel Bearing	Wheels With Ball Bearings
Plate Size	110 x 85mm
Bolt Hole Spacing	80 x 60mm
Plate Hole	12 x 9mm
Overall Height	145mm
Hardness Of Tread	77±5° Shore A
Load Capacity (Dynamic)	350kgs
Load Capacity (Static)	525kgs
Temperature	-20°C to +70°C
Fork Type	Rigid Caster
Stainless	N/A
Electrical Conductivity	N/A
Anti-Static	Y 10^6/~10^9/Ω
Weight	3.47kgs
Standard	ISO22883

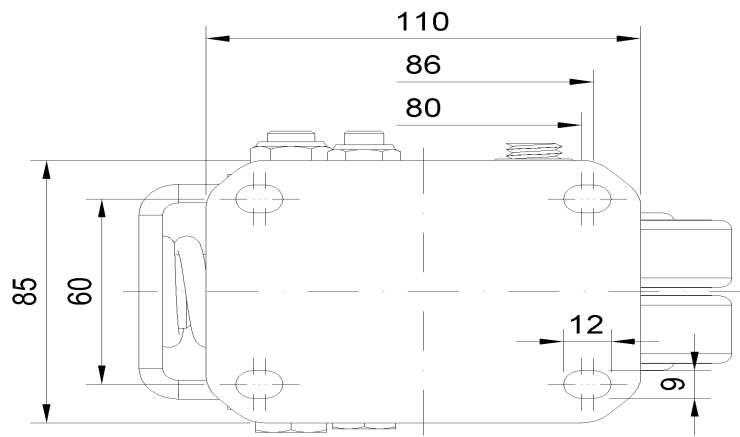
Advantages at a glance

Rolling Resistance	● ● ● ● ●
Operating Noise	● ● ● ● ●
Floor Surface Preservation	● ● ● ● ●

Dimensions



Mounting



\* For any deviation between metric and imperial spec, please refer to the metric spec.