



1165-2 Heavy Duty AMR/AGV-2 Caster Series

AQPU (brown round) Wheel Diameter × Wheel Width 100 x 40mm

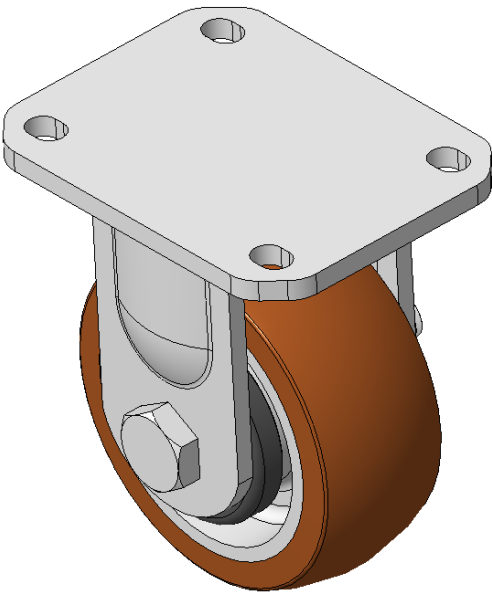
EAN

KS-11650402601013

Rigid Caster with Welded Caster Fork and electroplated finish. Mounting Type - Top Plate, 80x60 Bolt Hole Spacing. Cast Iron core with High Quality Polyurethane Wheel Tread, Cast Iron brown. Bearings: Ball Bearing bearings with special Anti-thread wheel cover.

Wheel tread: Made of high-quality polyurethane
Wheel Center: iron core/cast iron

Drawings are for reference only and may differ from the product



Picture may differ from original product

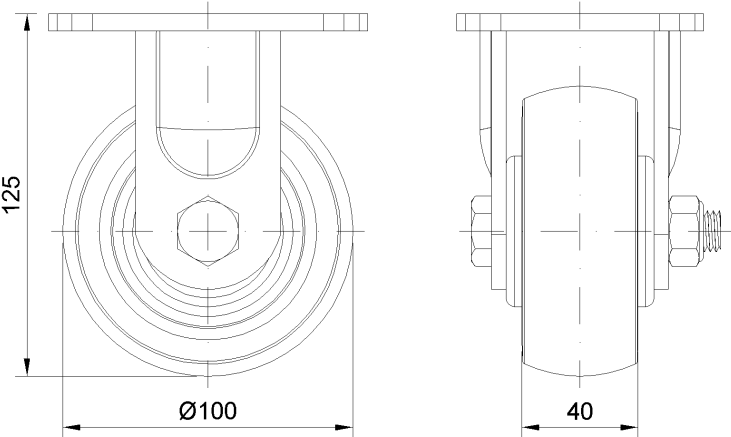
Technical Data

<input checked="" type="radio"/> Imperial <input type="radio"/> Metric	
Wheel Diameter	4 "
Wheel Width	1-5/8 "
Wheel Bearing	Wheels With Ball Bearings
Plate Size	4-3/8 " x 3-7/16 "
Bolt Hole Spacing	3-3/16 " x 2-7/16 "
Plate Hole	1/2 " x 23/64 "
Overall Height	5 "
Hardness Of Tread	92±5° Shore A
Load Capacity (Dynamic)	551lbs
Load Capacity (Static)	827lbs
Temperature	-4°F to +158°F
Fork Type	Rigid Caster
Stainless	N/A
Electrical Conductivity	N/A
Anti-Static	N/A
Weight	4.7lbs
Standard	ISO22883

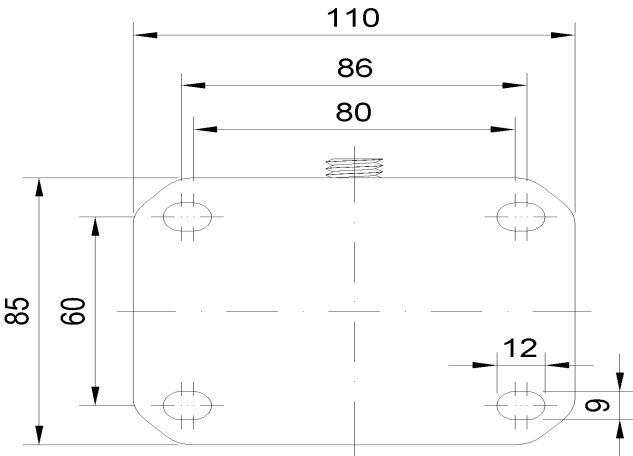
Advantages at a glance

Rolling Resistance	● ● ● ● ●
Operating Noise	● ● ● ● ●
Floor Surface Preservation	● ● ● ● ●

Dimensions



Mounting



* For any deviation between metric and imperial spec, please refer to the metric spec.