

1165-3 AMR/AGV-3 Double Precision Ball Bearing Caster (Medium Duty) Series



W Resolute(Pearlescent dark gray) Wheel Diameter × Wheel Width 100 x 31mm

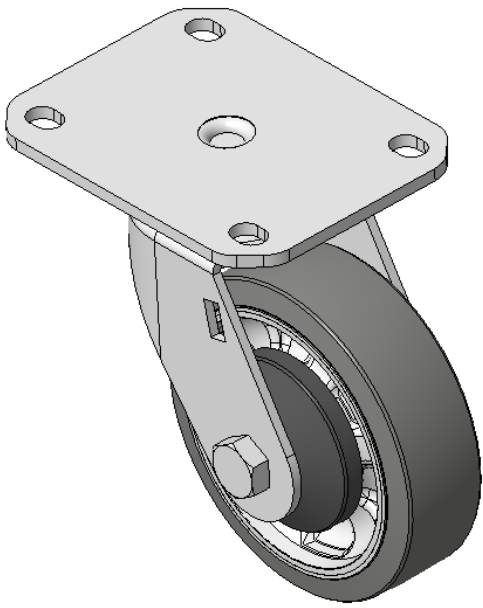
EAN

KS-11650403452013

Swivel Caster, Welded Caster Fork E-Coat Finish, Mounting Type - Top Plate, 80 x 60 Bolt Hole Spacing Aluminum core, High Quality Polyurethane tread Pearl-gray finish, Ball Bearing with special anti-tangling features Wrap-around wheel cap

Wheel tread: Made of high-quality polyurethane  
Wheel Center: iron core/cast iron

Drawings are for reference only and may differ from the product



Picture may differ from original product

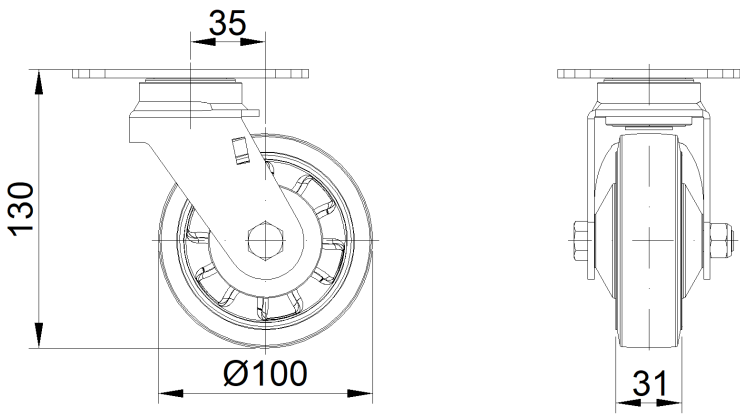
Technical Data

<input checked="" type="radio"/> Metric <input type="radio"/> Imperial	
Wheel Diameter	100mm
Wheel Width	31mm
Wheel Bearing	Wheels With Ball Bearings
Plate Size	110 x 85mm
Bolt Hole Spacing	80 x 60mm
Plate Hole	11.1 x 8.6mm
Offset	35mm
Swivel Interference	172mm
Overall Height	130mm
Swivel Radius	86mm
Hardness Of Tread	72±5° Shore A
Load Capacity (Dynamic)	80kgs
Load Capacity (Static)	120kgs
Temperature	-20°C to +60°C
Fork Type	Swivel Caster
Stainless	N/A
Electrical Conductivity	N/A
Anti-Static	N/A
Weight	1.18kgs
Standard	ISO22883

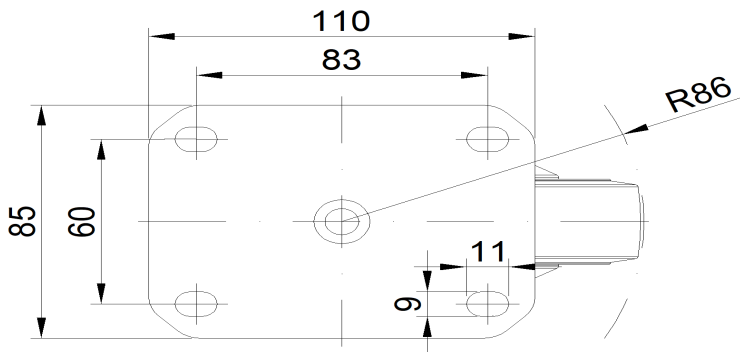
Advantages at a glance

Rolling Resistance	● ● ● ● ●
Operating Noise	● ● ● ● ●
Floor Surface Preservation	● ● ● ● ●

Dimensions



Mounting



\* For any deviation between metric and imperial spec, please refer to the metric spec.