

1165-3 AMR/AGV-3 Double Precision Ball Bearing Caster (Medium Duty) Series



W Resolute(Pearlescent dark gray) Wheel Diameter × Wheel Width 100 x 31mm

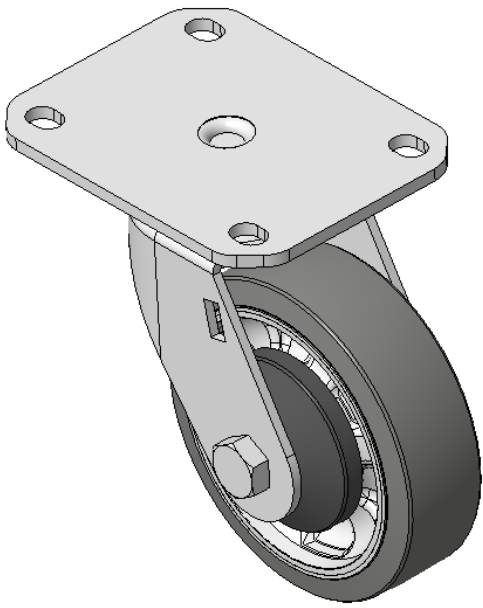
EAN

KS-11650403452013

Swivel Caster, Welded Caster Fork E-Coat Finish, Mounting Type - Top Plate, 80 x 60 Bolt Hole Spacing Aluminum core, High Quality Polyurethane tread Pearl-gray finish, Ball Bearing with special anti-tangling features Wrap-around wheel cap

Wheel tread: Made of high-quality polyurethane
Wheel Center: iron core/cast iron

Drawings are for reference only and may differ from the product



Picture may differ from original product

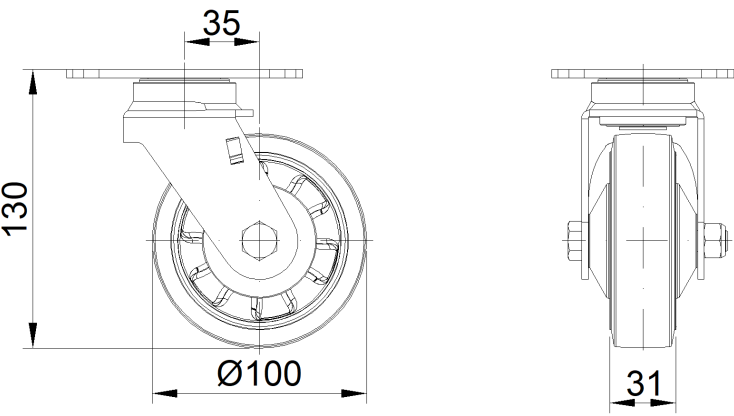
Technical Data

<input checked="" type="radio"/> Imperial <input type="radio"/> Metric	
Wheel Diameter	4 "
Wheel Width	1-1/4 "
Wheel Bearing	Wheels With Ball Bearings
Plate Size	4-3/8 " x 3-7/16 "
Bolt Hole Spacing	3-3/16 " x 2-7/16 "
Plate Hole	3/8 " x 3/8 "
Offset	1-3/8 "
Swivel Interference	6-7/8 "
Overall Height	5-3/16 "
Swivel Radius	3-7/16 "
Hardness Of Tread	72±5° Shore A
Load Capacity (Dynamic)	176lbs
Load Capacity (Static)	265lbs
Temperature	-4°F to +140°F
Fork Type	Swivel Caster
Stainless	N/A
Electrical Conductivity	N/A
Anti-Static	N/A
Weight	2.6lbs
Standard	ISO22883

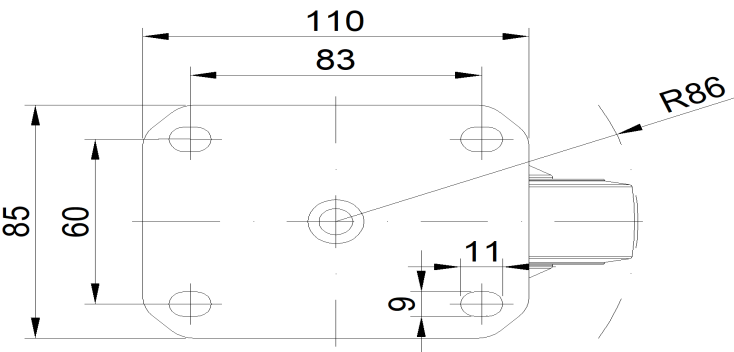
Advantages at a glance

Rolling Resistance	● ● ● ● ●
Operating Noise	● ● ● ● ●
Floor Surface Preservation	● ● ● ● ●

Dimensions



Mounting



* For any deviation between metric and imperial spec, please refer to the metric spec.