

1165-3 AMR/AGV-3 Double Precision Ball Bearing Caster (Medium Duty) Series



AQPU (blue round) Wheel Diameter × Wheel Width 100 x 36mm

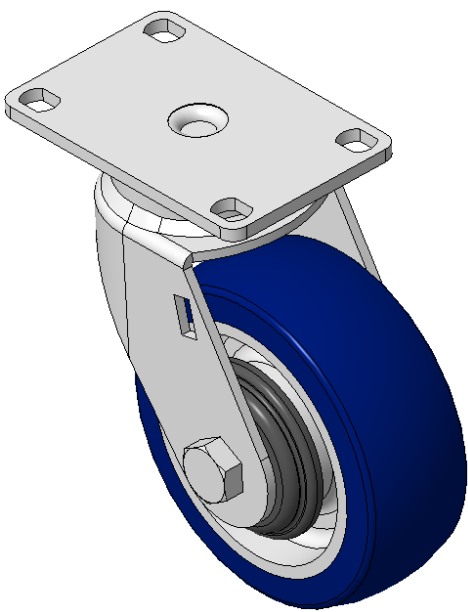
EAN

KS-11650403602053

Swivel Caster with Riveted Fork and Stamping Fork—High-Quality holes E-Coat Finish, Mounting Type - Top Plate, 75x45 Bolt Hole Spacing Aluminum core, High Quality Polyurethane tread Blue, Bearing—Ball Bearing.

Wheel tread: Made of high-quality polyurethane
Wheel Center: iron core/cast iron

Drawings are for reference only and may differ from the product



Picture may differ from original product

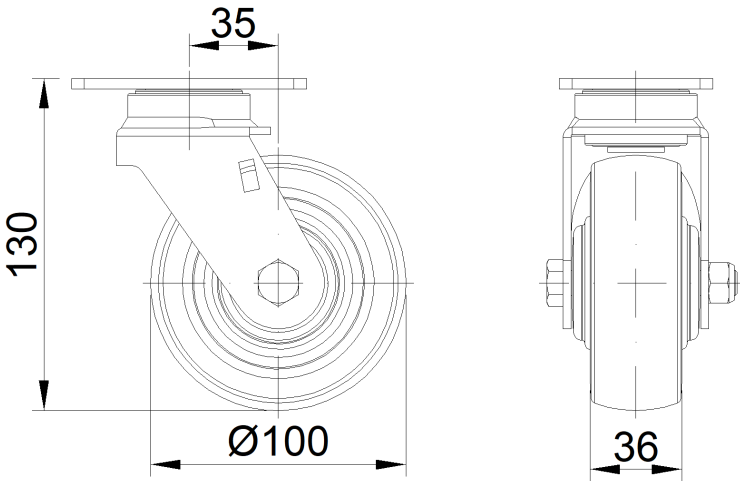
Technical Data

<input checked="" type="radio"/> Imperial <input type="radio"/> Metric	
Wheel Diameter	4 "
Wheel Width	1-7/16 "
Wheel Bearing	Wheels With Ball Bearings
Plate Size	3-11/16 " x 2-7/16 "
Bolt Hole Spacing	3 " x 1-13/16 "
Plate Hole	3/8 " x 3/8 "
Offset	1-3/8 "
Swivel Interference	6-7/8 "
Overall Height	5-3/16 "
Swivel Radius	3-7/16 "
Hardness Of Tread	87±5° Shore A
Load Capacity (Dynamic)	441lbs
Load Capacity (Static)	661lbs
Temperature	-4°F to +158°F
Fork Type	Swivel Caster
Stainless	N/A
Electrical Conductivity	N/A
Anti-Static	N/A
Weight	2.3lbs
Standard	ISO22883

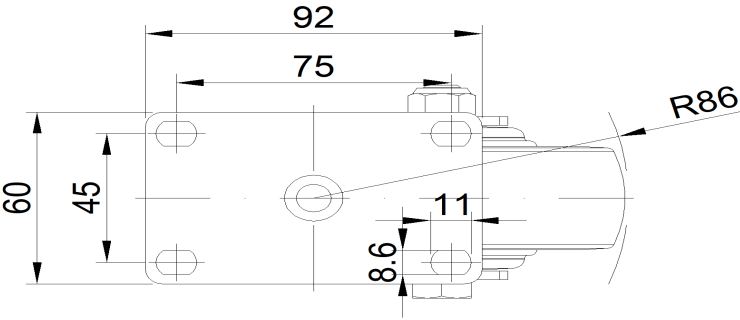
Advantages at a glance

Rolling Resistance	● ● ● ● ●
Operating Noise	● ● ● ● ●
Floor Surface Preservation	● ● ● ● ●

Dimensions



Mounting



* For any deviation between metric and imperial spec, please refer to the metric spec.