

1165-3 AMR/AGV-3 Double Precision Ball Bearing Caster (Medium Duty) Series



Resolute (blue gray) Wheel Diameter × Wheel Width 125 x 31mm

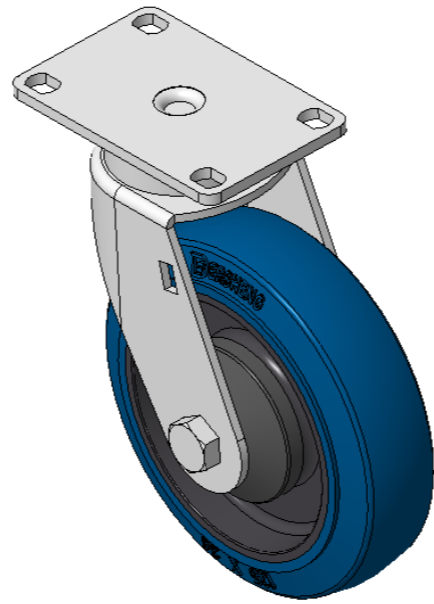
EAN

KS-11650503452123

Swivel Caster with Riveted Fork and Stamping Fork—75 x 45 mm (3" x 1-3/4") Bolt Hole Spacing E-Coat Finish, Top Plate (3T) Mounting Type, 75 x 45 Bolt Hole Spacing High-quality Impact Resistance Polypropylene core,High-Quality Thermoplastic Rubber (TPR) tread Blue-gray color, Bearing—Ball Bearing.

Wheel tread: Made of high-quality polyurethane
Wheel Center: iron core/cast iron

Drawings are for reference only and may differ from the product



Picture may differ from original product

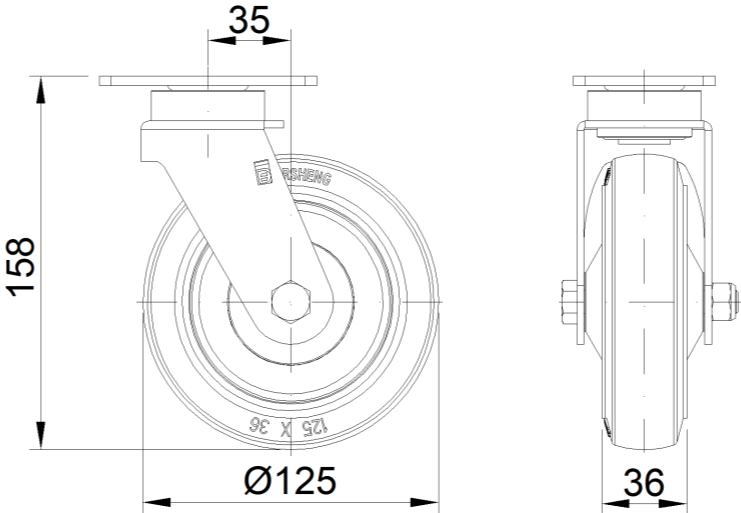
Technical Data

<input checked="" type="radio"/> Metric <input type="radio"/> Imperial	
Wheel Diameter	125mm
Wheel Width	36mm
Wheel Bearing	Wheels With Ball Bearings
Plate Size	92 x 60mm
Bolt Hole Spacing	75 x 45mm
Plate Hole	11.1 x 8.6mm
Offset	35mm
Swivel Interference	198mm
Overall Height	158mm
Swivel Radius	99mm
Hardness Of Tread	85±5° Shore A
Load Capacity (Dynamic)	130kgs
Load Capacity (Static)	195kgs
Temperature	-20°C to +80°C
Fork Type	Swivel Caster
Stainless	N/A
Electrical Conductivity	N/A
Anti-Static	N/A
Weight	1.35kgs
Standard	ISO22883

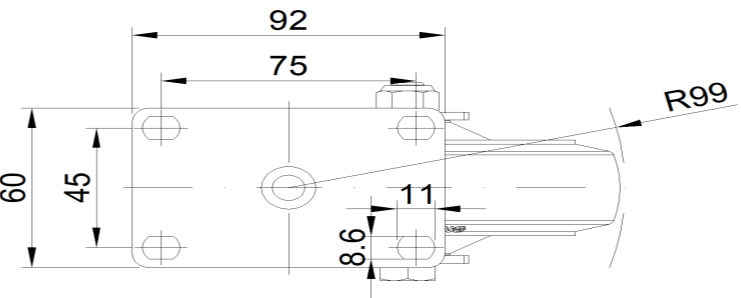
Advantages at a glance

Rolling Resistance	● ● ● ● ●
Operating Noise	● ● ● ● ●
Floor Surface Preservation	● ● ● ● ●

Dimensions



Mounting



* For any deviation between metric and imperial spec, please refer to the metric spec.