

1165-3 AMR/AGV-3 Double Precision Ball Bearing Caster (Medium Duty) Series



Resolute (blue gray) Wheel Diameter × Wheel Width 125 x 31mm

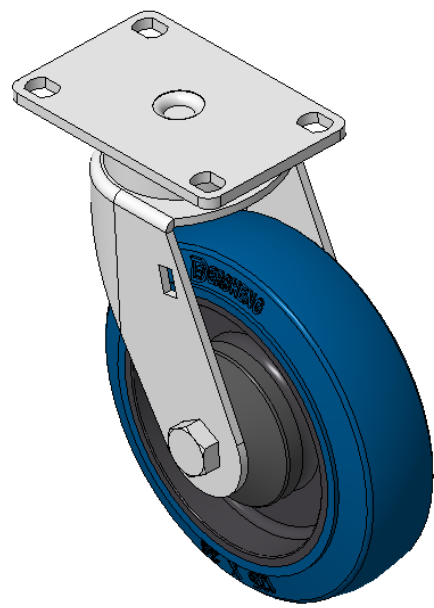
EAN

KS-11650503452123

Swivel Caster with Riveted Fork and Stamping Fork—75 x 45 mm (3" x 1-3/4") Bolt Hole Spacing E-Coat Finish, Top Plate (3T) Mounting Type, 75 x 45 Bolt Hole Spacing High-quality Impact Resistance Polypropylene core,High-Quality Thermoplastic Rubber (TPR) tread Blue-gray color, Bearing—Ball Bearing.

Wheel tread: Made of high-quality polyurethane  
Wheel Center: iron core/cast iron

Drawings are for reference only and may differ from the product



Picture may differ from original product

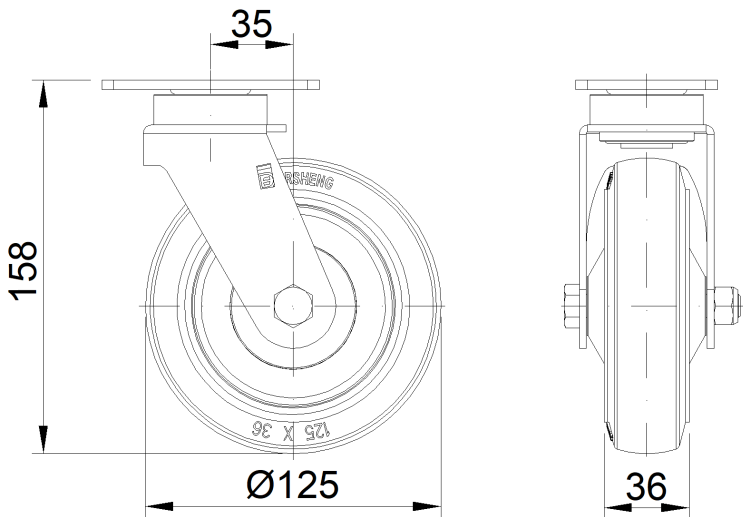
Technical Data

<input checked="" type="radio"/> Imperial <input type="radio"/> Metric	
Wheel Diameter	5 "
Wheel Width	1-7/16 "
Wheel Bearing	Wheels With Ball Bearings
Plate Size	3-11/16 " x 2-7/16 "
Bolt Hole Spacing	3 " x 1-13/16 "
Plate Hole	3/8 " x 3/8 "
Offset	1-3/8 "
Swivel Interference	7-15/16 "
Overall Height	6-5/16 "
Swivel Radius	4 "
Hardness Of Tread	85±5° Shore A
Load Capacity (Dynamic)	287lbs
Load Capacity (Static)	430lbs
Temperature	-4°F to +176°F
Fork Type	Swivel Caster
Stainless	N/A
Electrical Conductivity	N/A
Anti-Static	N/A
Weight	3.0lbs
Standard	ISO22883

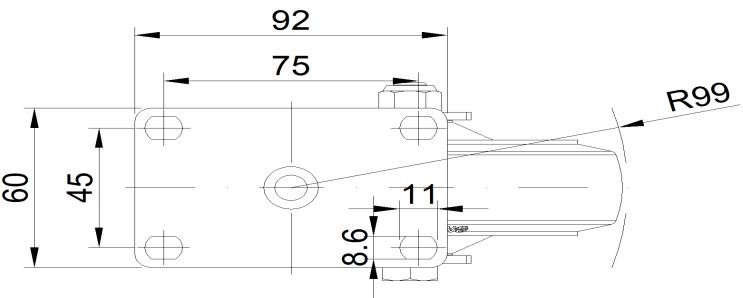
Advantages at a glance

Rolling Resistance	● ● ● ● ●
Operating Noise	● ● ● ● ●
Floor Surface Preservation	● ● ● ● ●

Dimensions



Mounting



\* For any deviation between metric and imperial spec, please refer to the metric spec.