

Product Data Sheet

1165-4 1165 Series — AMR/AGV-4 Single Precision Ball Bearing Caster (Medium Duty)Series



PPR E-Conductive (dark light gray) Wheel Diameter x Wheel Width 125 x 31mm

EAN

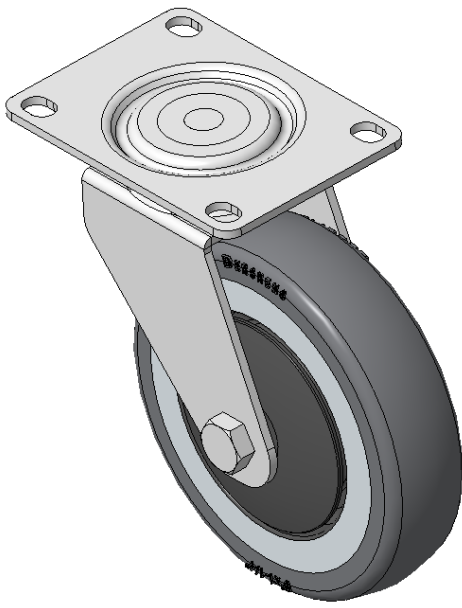
KS-11650504172023

Swivel Caster, Welded Caster Fork, electroplated finish  
Mounting Type - Top Plate, 75x45 Bolt Hole Spacing  
High-Quality Impact-Resistant Polypropylene Wheel Center, High-Quality Reinforced Polypropylene Rubber (TPR) Wheel Tread  
Cast Iron light gray, Bearing—Ball Bearings

Wheel surface: Thermoplastic elastomer (TPR) wheel surface

Wheel Center: Polypropylene wheel core

Drawings are for reference only and may differ from the product



Picture may differ from original product

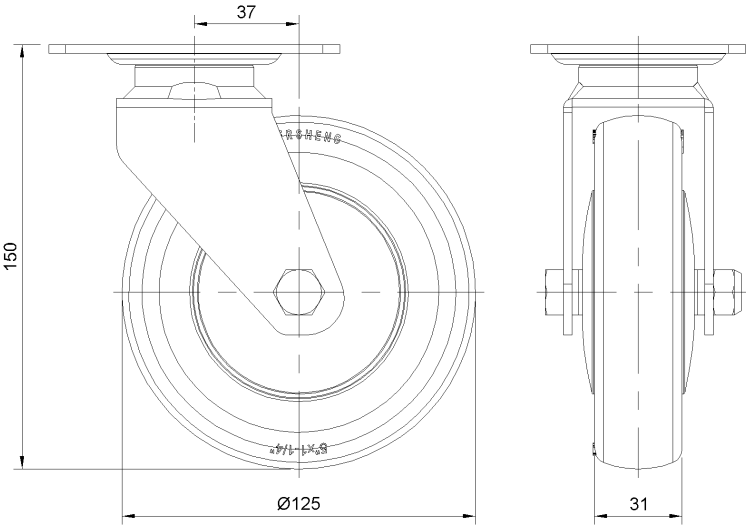
Technical Data

<input checked="" type="radio"/> Imperial <input type="radio"/> Metric	
Wheel Diameter	5 "
Wheel Width	1-1/4 "
Wheel Bearing	Wheels With Ball Bearings
Plate Size	4-1/16 " x 3 "
Bolt Hole Spacing	3-3/16 " x 2-7/16 "
Plate Hole	1/2 " 23/64 "
Offset	1-1/2 "
Swivel Interference	8 "
Overall Height	6 "
Swivel Radius	4 "
Hardness Of Tread	87±5° Shore A
Load Capacity (Dynamic)	187lbs
Load Capacity (Static)	281lbs
Temperature	-4°F to +140°F
Fork Type	Swivel Caster
Stainless	N/A
Electrical Conductivity	Y 10^3/~10^4/Ω
Anti-Static	N/A
Weight	5.6lbs
Standard	ISO22883

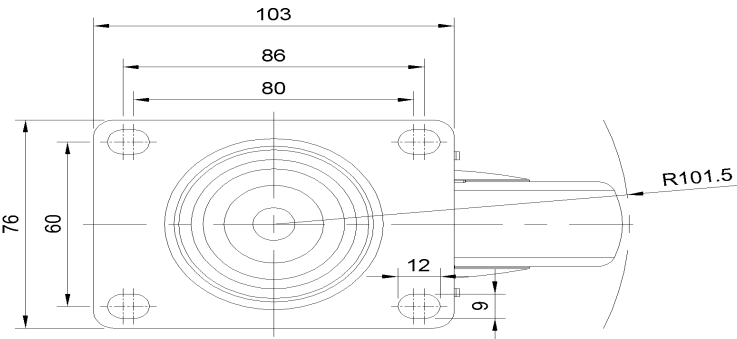
Advantages at a glance

Rolling Resistance	● ● ● ● ○
Operating Noise	● ● ● ● ○
Floor Surface Preservation	● ● ● ● ●

Dimensions



Mounting



\* For any deviation between metric and imperial spec, please refer to the metric spec.