

Product Data Sheet

1165-4 1165 Series — AMR/AGV-4 Single Precision Ball Bearing Caster (Medium Duty)Series



AQPU (grey round) Wheel Diameter × Wheel Width 125 x 31mm

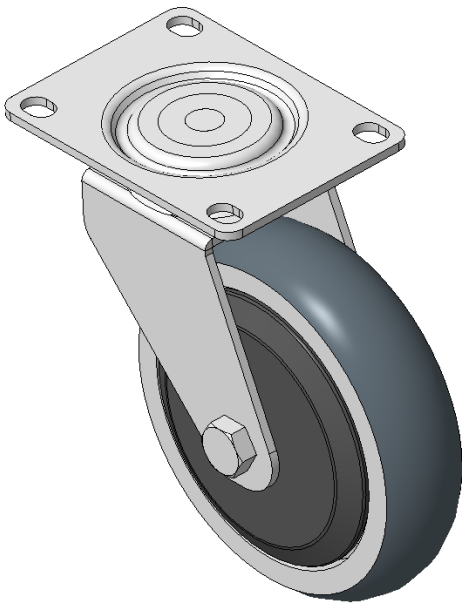
EAN

KS-11650504602013

Swivel Caster with Welded Caster Fork and electroplated finish  
Mounting Type - Top Plate, 80x60 Bolt Hole Spacing  
Cast Iron core with High Quality Polyurethane Wheel Tread, Cast Iron gray Bearings—Ball Bearings with special Anti-thread wheel cover

Wheel tread: Made of high-quality polyurethane  
Wheel Center: iron core/cast iron

Drawings are for reference only and may differ from the product



Picture may differ from original product

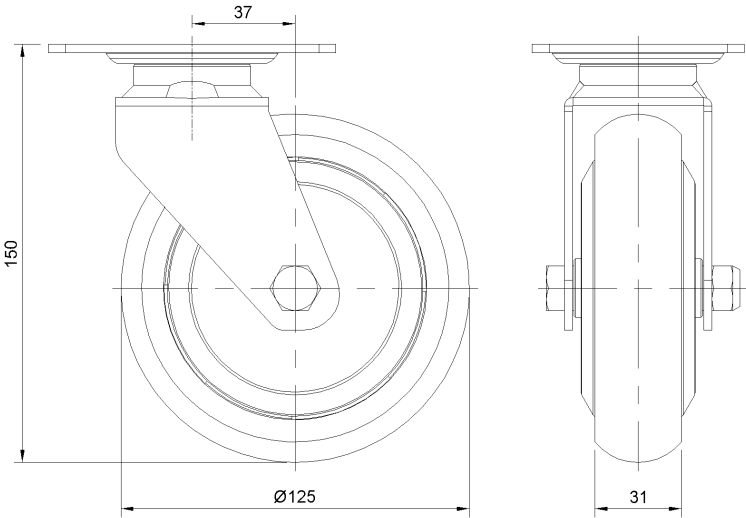
Technical Data

<input checked="" type="radio"/> Metric <input type="radio"/> Imperial	
Wheel Diameter	125mm
Wheel Width	31mm
Wheel Bearing	Wheels With Ball Bearings
Plate Size	103 x 76mm
Bolt Hole Spacing	80 x 60mm
Plate Hole	129mm
Offset	37mm
Swivel Interference	203mm
Overall Height	150mm
Swivel Radius	101.5mm
Hardness Of Tread	77±5° Shore A
Load Capacity (Dynamic)	200kgs
Load Capacity (Static)	300kgs
Temperature	-20°C to +70°C
Fork Type	Swivel Caster
Stainless	N/A
Electrical Conductivity	N/A
Anti-Static	N/A
Weight	3.69kgs
Standard	ISO22883

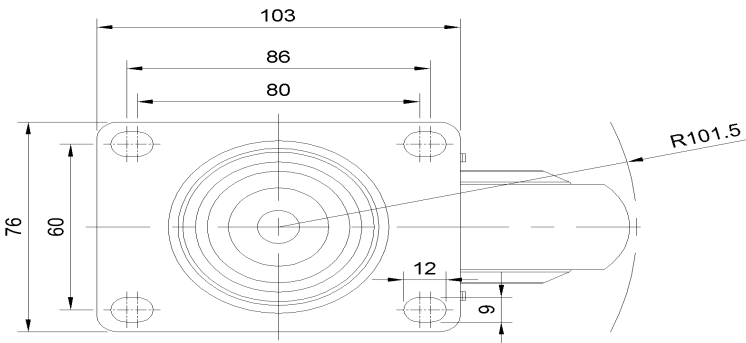
Advantages at a glance

Rolling Resistance	● ● ● ● ●
Operating Noise	● ● ● ● ●
Floor Surface Preservation	● ● ● ● ●

Dimensions



Mounting



\* For any deviation metric and imperial spec, please refer to the metric spec.